



Mineral Brick Slips

NEW BUILD | REBUILD | RENOVATE

www.licataltd.co.uk

Licata Mineral Brick Slips

CONTENTS

Systems & application

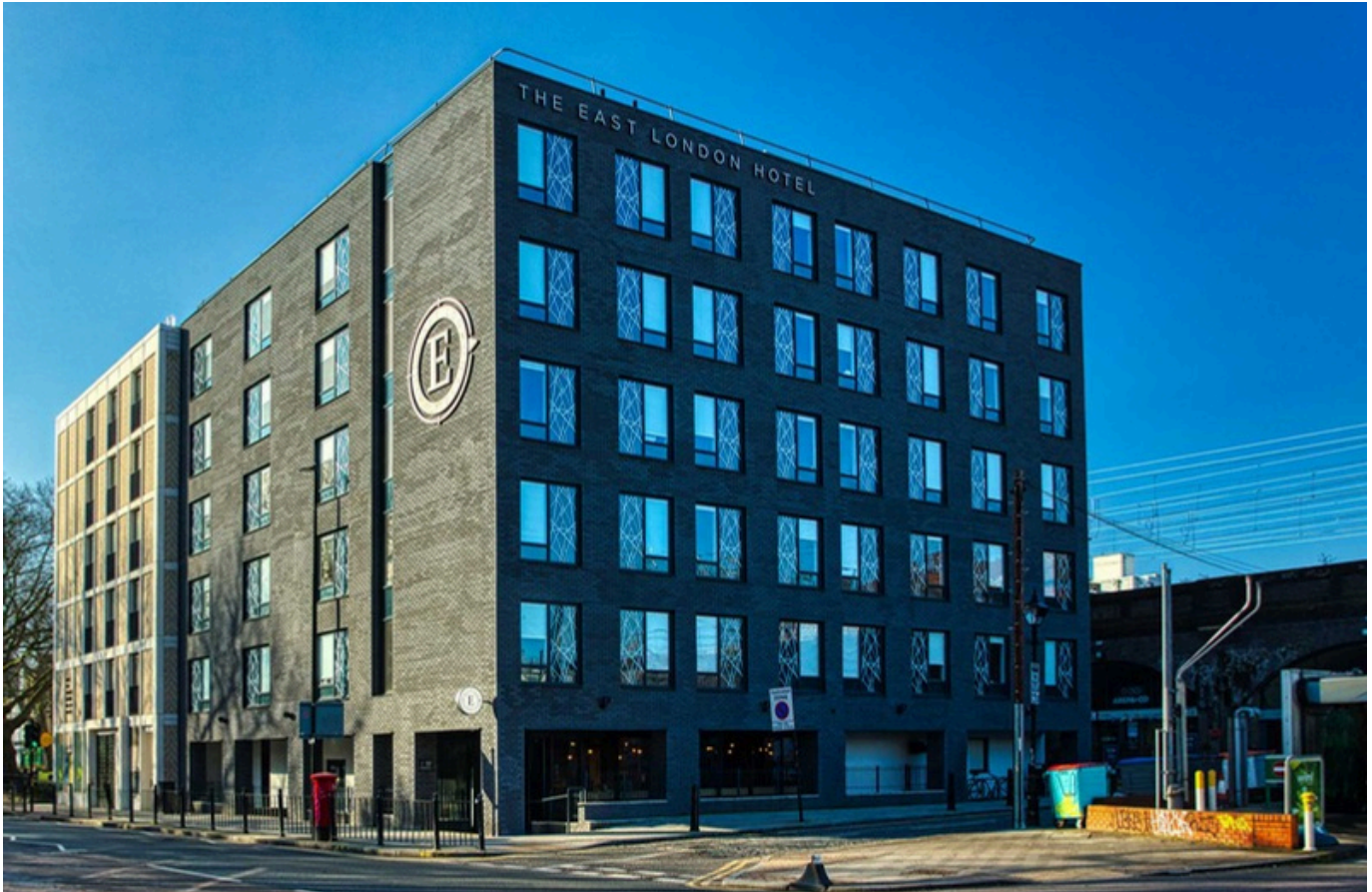
page 3

Full colour range

page 8

Adhesive mortar & primer

page 20



Inspiration

Licata mineral brick slips have been used to finish both interior and exterior walls, with millions of square meters of facades completed using them. Brick slips serve both technical and aesthetic purposes in facade cladding. When used in new builds or renovation projects, they create a masonry look that is indistinguishable from traditional brickwork, preserving the authentic character of buildings and neighbourhoods.

Additionally, mineral brick slips can be used to achieve a modern or contemporary ambiance.

They can be applied to various surfaces, including insulation systems, concrete, stone surfaces, stucco layers, and different types of board. Please contact us to explore the possibilities.

Products

Licata mineral brick slips offer a versatile solution for both aesthetic and functional facade cladding. Available in a wide range of colours, sizes, and textures, they cater to diverse design preferences and project requirements. To complement the installation, Licata provides a specially formulated adhesive, available in multiple colours to match or contrast with the brick slips and to ensure a consistent, cohesive finish.

For more specialised needs, Licata offers custom "project brick slips," which can faithfully reproduce the look of existing bricks. This is especially valuable for restoration projects or when maintaining architectural heritage is crucial. For more information or to discuss how Licata mineral brick slips can meet the specific needs of your project, please contact us. We are happy to assist you in exploring all available options.



Licata Mineral Brick Slips

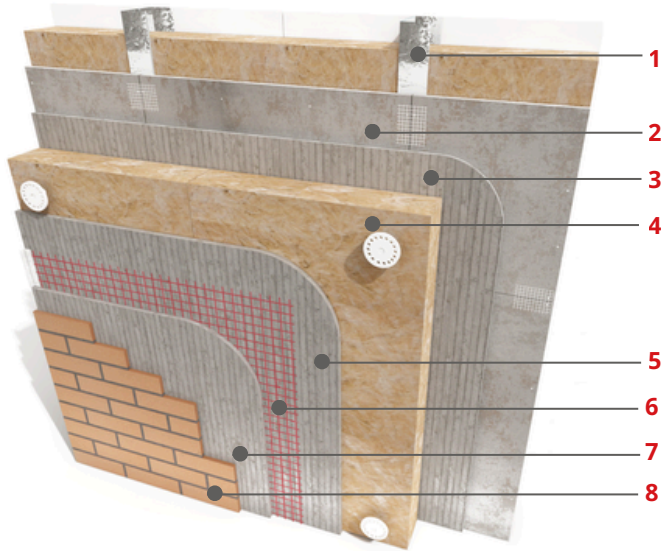
SYSTEMS & APPLICATION





Licata Mineral Brick Slip System on Steel Frame

Mineral brick slips can be used in conjunction with a LicataTherm external wall insulation system on steel framed systems.



SCAN ME TO
VIEW THE FULL
SYSTEM ONLINE

System Components

1. Steel frame
2. Licata A1 rated fibre cement board
3. Adhesive system: Raso top 800 adhesive minimum 40% coverage.
4. Insulation boards achieve insulation values to meet or exceed, stringent requirements of Part 'L' of the building regulations.
5. Reinforcing Coat (Raso Top 800) - a dry adhesive hydraulic and polymer binder, modifying additives and fine grain fillers, vapour permeable. Range of working temperatures from +5 to +30 C. Mixed with around 6.5 litres of clean water per 25kg bag.
6. Reinforcements shall be our fibreglass mesh with a surface treatment coating to provide a high resistance to alkali attack and is manufactured so as to prevent laminar movement and deformation.
7. Licata mineral brick slips adhesive and joint mortar - cement-free mortar to apply brick slips.
8. Mineral brick slips to create the appearance of a classic brick finish.

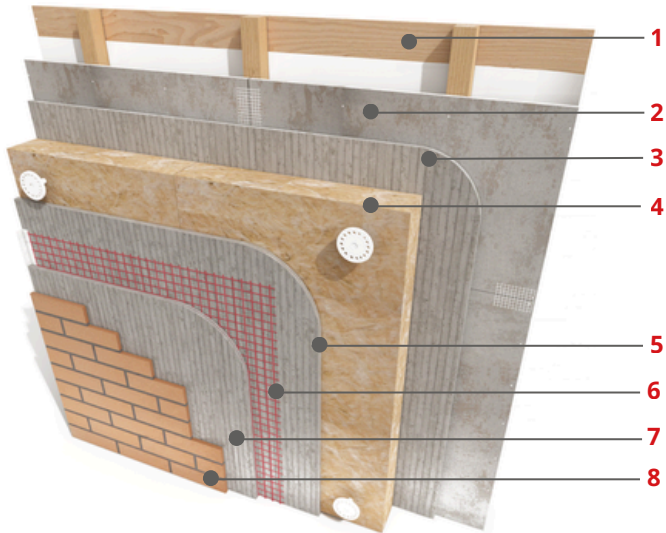
Features

- Excellent drying time
- Breathable & lightweight
- Durable & water repellent
- Great adhesion & spreadability
- Suitable for steel frames
- Wide range of colour options
- Weather resistant
- Protects against algae & mould



Licata Mineral Brick Slip System on Timber Frame

Mineral brick slips can be used in conjunction with a LicataTherm external wall insulation system on timber framed systems.



SCAN ME TO
VIEW THE FULL
SYSTEM ONLINE

System Components

1. Panel timber frame
2. Licata A1 rated fibre cement board
3. Adhesive system: Raso top 800 adhesive minimum 40% coverage.
4. Insulation boards achieve insulation values to meet or exceed, stringent requirements of Part 'L' of the building regulations.
5. Reinforcing coat (Raso Top 800) - a dry adhesive hydraulic and polymer binder, modifying additives and fine grain fillers, vapour permeable. Range of working temperatures from +5 to +30 C. Mixed with around 6.5 litres of clean water per 25kg bag.
6. Reinforcements shall be our fibreglass mesh with a surface treatment coating to provide a high resistance to alkali attack and is manufactured so as to prevent laminar movement and deformation.
7. Licata mineral brick slips adhesive and joint mortar - cement-free mortar to apply brick slips.
8. Mineral brick slips to create the appearance of a classic brick finish.

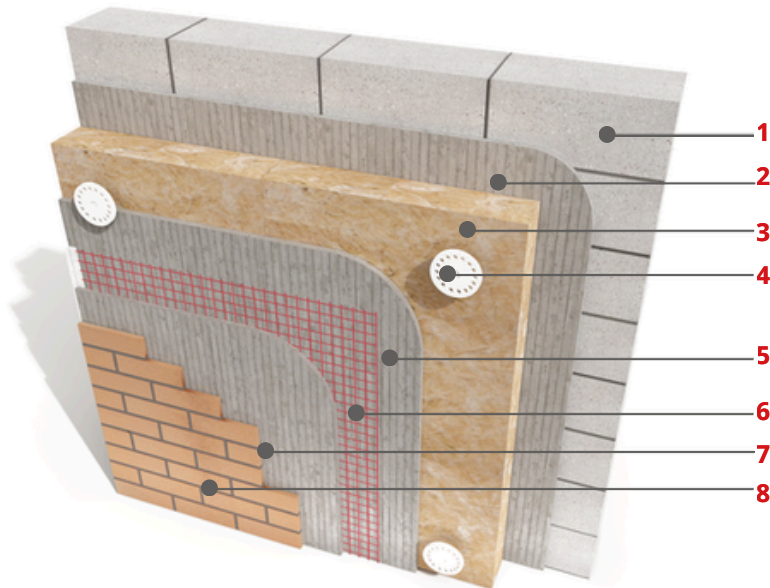
Features

- Excellent drying time
- Breathable & lightweight
- Durable & water repellent
- Great adhesion & spreadability
- Suitable for timber frames
- Wide range of colour options
- Weather resistant
- Protects against algae & mould



Licata Mineral Brick Slip System on Blockwork/Brickwork

Mineral brick slips can be used in conjunction with a LicataTherm external wall insulation system on brick/block work.



SCAN ME TO
VIEW THE FULL
SYSTEM ONLINE

System Components

- 1.** Blockwork / brickwork
- 2.** Adhesive system: Raso top 800 adhesive minimum 40% coverage.
- 3.** Insulation boards achieve insulation values to meet or exceed, stringent requirements of Part 'L' of the building regulations.
- 4.** Fire barriers to comply with the recommendations of the BRE, horizontal barriers are required to be placed at every floor level above 2 storeys. These barriers comprise of 1200mm x 200mm rock fibre panels, density 140kg/m³. The strip is adhered to the substrate in a continuous strip around the building.
- 5.** Reinforcing coat (Raso Top 800) - a dry adhesive hydraulic and polymer binder, modifying additives and fine grain fillers, vapour permeable. Range of working temperatures from +5 to +30 C. Mixed with around 6.5 litres of clean water per 25kg bag.
- 6.** Reinforcements shall be our fibreglass mesh with a surface treatment coating to provide a high resistance to alkali attack and is manufactured so as to prevent laminar movement and deformation.
- 7.** Licata mineral brick slips adhesive and joint mortar - cement-free mortar to apply brick slips.
- 8.** Mineral brick slips to create the appearance of a classic brick finish.

Features

- Excellent drying time
- Breathable & lightweight
- Durable & water repellent
- Great adhesion & spreadability
- Suitable for various substrates
- Wide range of colour options
- Weather resistant
- Protects against algae & mould



Application

Take a look at our 5 part step by step for applying our brick slips.



1 Apply adhesive coating to the area you wish to apply the brick slips with a toothed trowel.



2 Starting at the top, begin to carefully apply the slips in the desired pattern. Embed corner pieces firmly.



3 Continue applying the slips taking care to not over apply material.



4 Carefully trim brick slips when needed to fit in specific areas.



5 Using an appropriate sized brush carefully brush the adhesive in between the slips.



SCAN ME FOR AN
INSTALLATION
TUTORIAL

Licata Mineral Brick Slips

FULL COLOUR RANGE



CANYON

Mineral Brick Slip

Size	65 x 215mm
Adhesive Mortar	Brown



SLATE

Mineral Brick Slip

Size	65 x 215mm
Adhesive Mortar	Dark Brown



LACE

Mineral Brick Slip

Size	65 x 215mm
Adhesive Mortar	Stone



MAROON

Mineral Brick Slip

Size	65 x 215mm
Adhesive Mortar	Dark Brown



RUSTIC

Mineral Brick Slip

Size	65 x 215mm
Adhesive Mortar	Stone



WHEAT

Mineral Brick Slip

Size	65 x 215mm
Adhesive Mortar	Stone



REDWOOD

Mineral Brick Slip

Size	65 x 215mm
Adhesive Mortar	Dark Brown



ASH

Mineral Brick Slip

Size	65 x 215mm
Adhesive Mortar	Dark Brown



CHARCOAL

Mineral Brick Slip

Size	65 x 215mm
Adhesive Mortar	Dark Brown



VANILLA

Mineral Brick Slip

Size	65 x 215mm
Adhesive Mortar	Sand Grey



DUNE FROST

Mineral Brick Slip

Size	65 x 215mm
Adhesive Mortar	Sand Grey



AMBER SLATE

Mineral Brick Slip

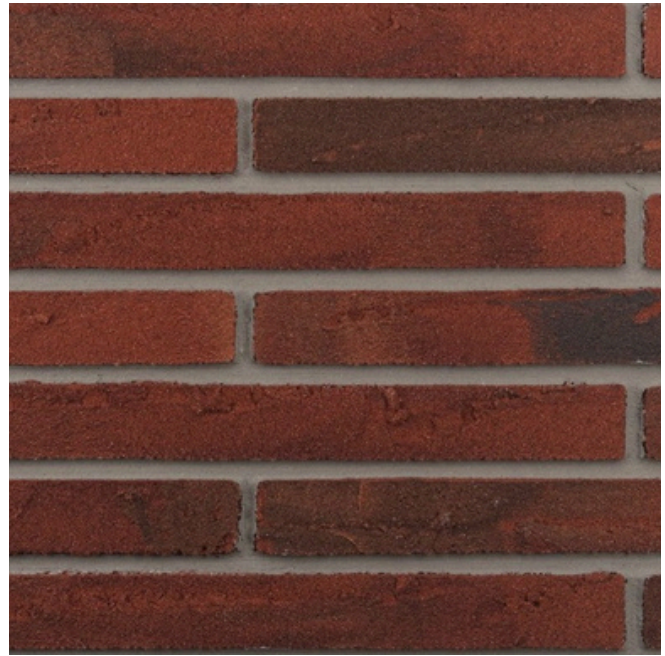
Size	65 x 215mm
Adhesive Mortar	Cement Grey



RUSTIC BARK

Mineral Brick Slip

Size	65 x 215mm
Adhesive Mortar	Stone



BRICKWOOD

Mineral Brick Slip

Size	65 x 215mm
Adhesive Mortar	Cement Grey



STORM

Mineral Brick Slip

Size	65 x 215mm
Adhesive Mortar	Cement Grey



SOFT STEEL

Mineral Brick Slip

Size	65 x 215mm
Adhesive Mortar	Stone



GOLDEN DUNE

Mineral Brick Slip

Size	65 x 215mm
Adhesive Mortar	Taupe



SNOW

Mineral Brick Slip

Size	65 x 215mm
Adhesive Mortar	Stone



REDSTONE

Mineral Brick Slip

Size	65 x 215mm
Adhesive Mortar	Taupe



TERRA

Mineral Brick Slip

Size	65 x 215mm
Adhesive Mortar	Cement Grey



RUST

Mineral Brick Slip

Size	65 x 215mm
Adhesive Mortar	Brown



SAND

Mineral Brick Slip

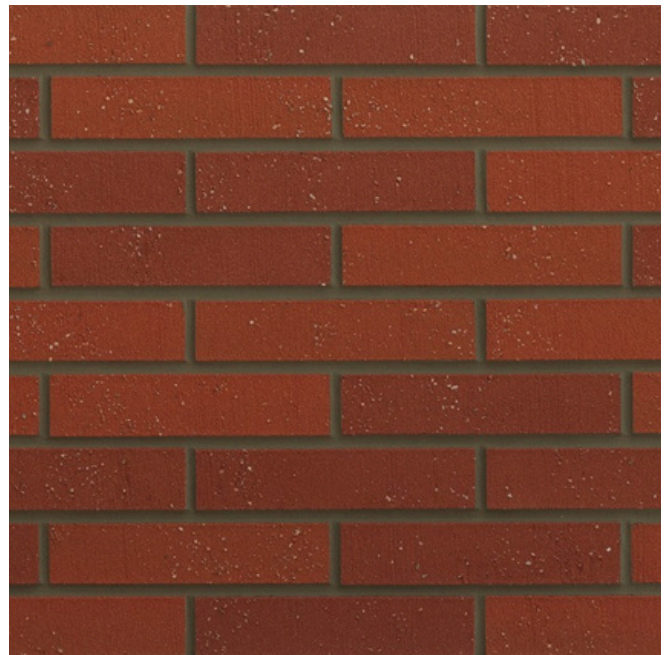
Size	65 x 215mm
Adhesive Mortar	



FLAMES

Mineral Brick Slip

Size	65 x 215mm
Adhesive Mortar	Brown



PUMPKIN

Mineral Brick Slip

Size	65 x 215mm
Adhesive Mortar	Brown



SMOKE

Mineral Brick Slip

Size	65 x 215mm
Adhesive Mortar	Dark Brown



RAVEN

Mineral Brick Slip

Size	65 x 215mm
Adhesive Mortar	Dark Brown



CARAMEL

Mineral Brick Slip

Size	65 x 215mm
------	------------



MUSTARD

Mineral Brick Slip

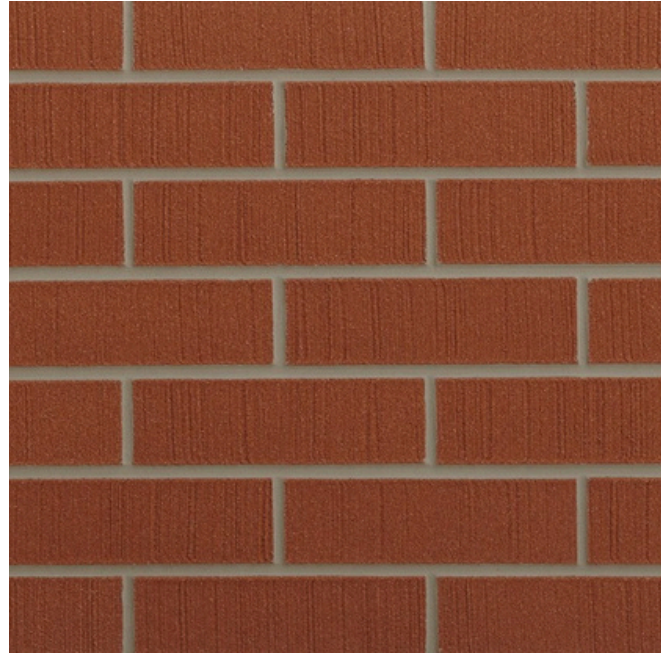
Size	65 x 215mm
------	------------



RUBY

Mineral Brick Slip

Size	65 x 215mm
------	------------



AUTUMN

Mineral Brick Slip

Size	65 x 215mm
------	------------

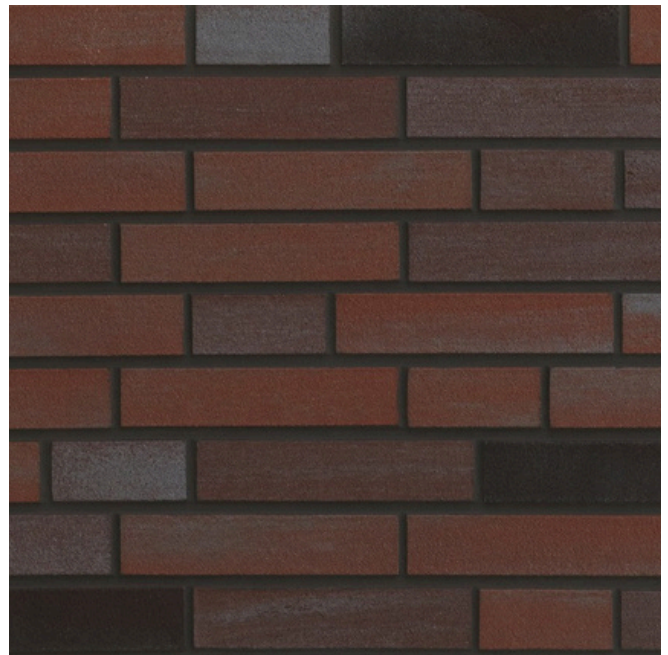
Adhesive Mortar	Stone
-----------------	-------



ONYX

Mineral Brick Slip

Size	65 x 215mm
------	------------



PENNY

Mineral Brick Slip

Size	65 x 215mm
------	------------

Adhesive Mortar	Dark Brown
-----------------	------------



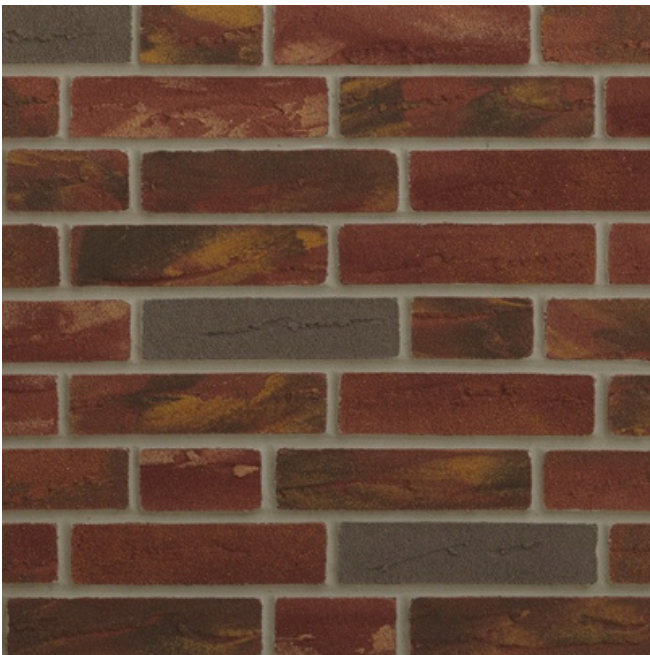
TOFFEE
Mineral Brick Slip

Size	65 x 215mm
------	------------



CHOCOLATE
Mineral Brick Slip

Size	65 x 215mm
Adhesive Mortar	Dark Brown



SUNSET
Mineral Brick Slip

Size	65 x 215mm
Adhesive Mortar	Stone



APRICOT
Mineral Brick Slip

Size	200x300 mm
Adhesive Mortar	Dark Brown



POWDER
Mineral Brick Slip

Size	65 x 215mm
Adhesive Mortar	Light Grey



SHADOW
Mineral Brick Slip

Size	65 x 215mm
Adhesive Mortar	Dark Brown



COTTAGE
Mineral Brick Slip

Size	65 x 215mm
------	------------



BLONDIE
Mineral Brick Slip

Size	65 x 215mm
------	------------



BISCUIT
Mineral Brick Slip

Size	271 x 370mm
-------------	-------------



TAN
Mineral Brick Slip

Size	271 x 370mm
-------------	-------------



MOCHA
Mineral Brick Slip

Size	271 x 370mm
Adhesive Mortar	Taupe

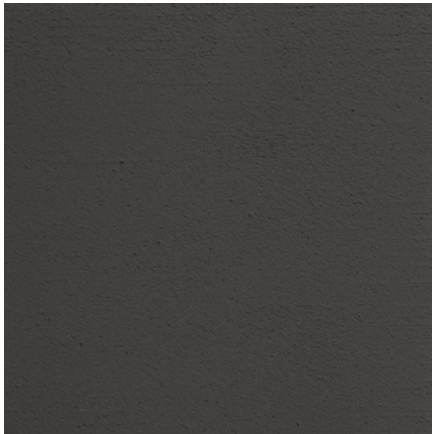
Licata Mineral Brick Slips

ADHESIVE MORTAR & PRIMER

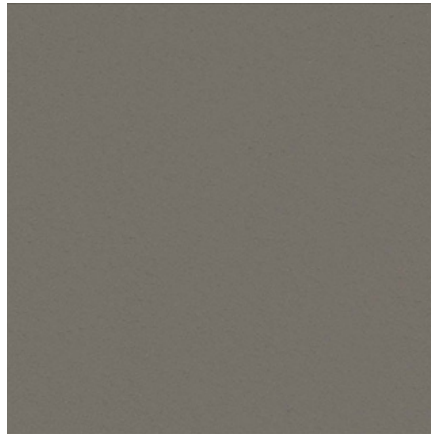


Licata Adhesive Mortar & Primer

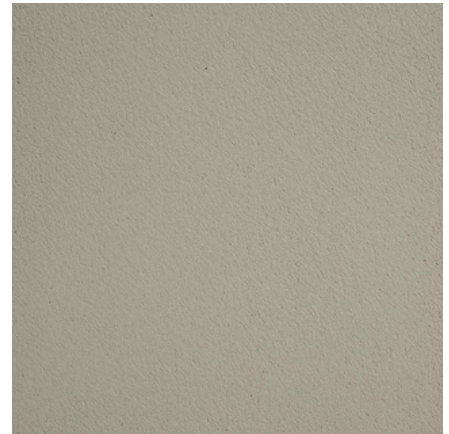
The mineral bricks slips finish is applied using Licata adhesive mortar. For façades, pointing is unnecessary as the adhesive mortar serves as both the adhesive and pointing mortar. The adhesive can be produced in nearly any colour, similar to the range of available brick slips. Below are some standard colour options for Licata adhesive mortar. To prepare substrates, Licata primer is recommended. This primer effectively regulates substrate suction and enhances adhesion. For comprehensive product and application information, please refer to our technical data sheets for both the adhesive and primer.



DARK BROWN



STONE GREY



STONE



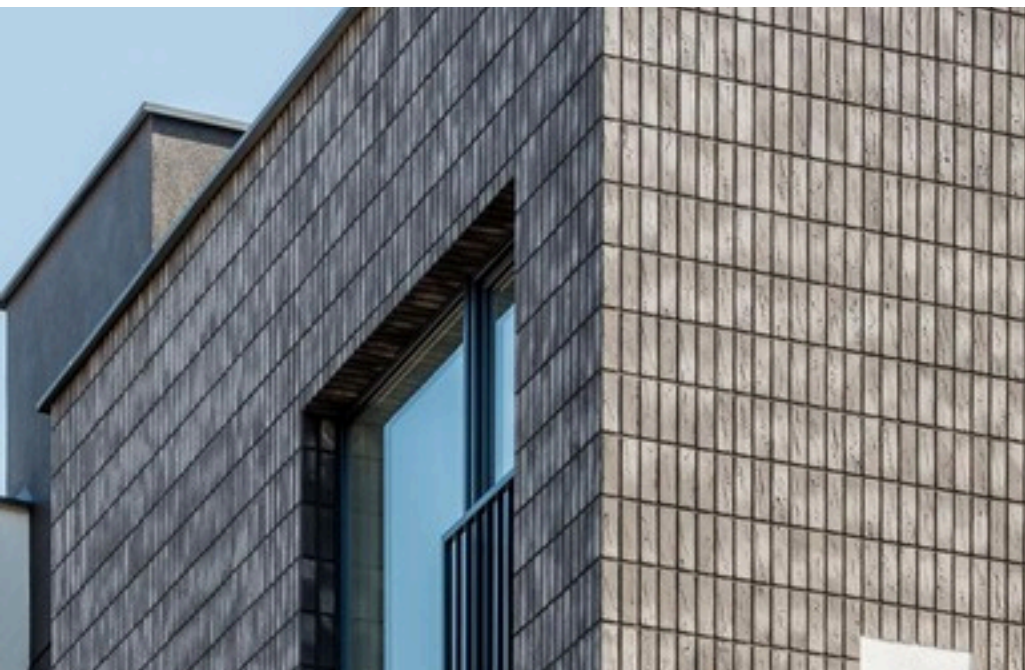
TAUPE



BEIGE STONE



LIGHT GREY



BROWN



Twickenham

Unit 6, Hampton Business Park
Bolney Way, Twickenham
TW13 6DB, United Kingdom

Tel: 020 8894 3372

Southgate

Unit 5 Brunswick Industrial Park
Southgate
N11 1JL, United Kingdom

Tel: 020 3987 0200

Dartford

Unit 4 Schooner Park
Schooner Court, Dartford
DA2 6NW, United Kingdom

Tel: 01322 927 600

Birmingham

Unit 17 Frankley Industrial Estate
Tay Road, Frankley
B45 0LD, Birmingham, United Kingdom

Tel: 0121 667 2412

Manchester

Unit 6C Stanley Green Trading Estate,
Cheadle Hulme
SK8 6RB

Tel: 0161 949 0035

Essex

Shades House
Hodgson Way, Wickford
SS11 8YD

Tel: 0126 839 5828