



# Licata Clay Brick Slips Systems



NEW BUILD | REBUILD | RENOVATE

[www.licataltd.co.uk](http://www.licataltd.co.uk)

# Contents

## INTRODUCTION

A success Story	pg 3
Energy Efficiency & The Environment	pg 6

## LICATA CLAY BRICK SLIPS SYSTEMS

Onto Steel Frame	pg 8
Onto Timber Frame	pg 9
Onto Block/Brick Work	pg 10

## CLAY BRICK SLIPS

The Urban Range	pg 11
The Heritage Range	pg 25
The Suburbia Range	pg 31

# A Success Story

Licata has its roots in Italy in the early 1980s is now positioned in the professional building sector as a relevant producer of systems and solutions for conservative refurbishment as well as innovative systems for new buildings.

Our dedication to innovation through extensive research, development and testing helped drive decades of growth. This is how we continue to provide top-quality building solutions here in the UK.



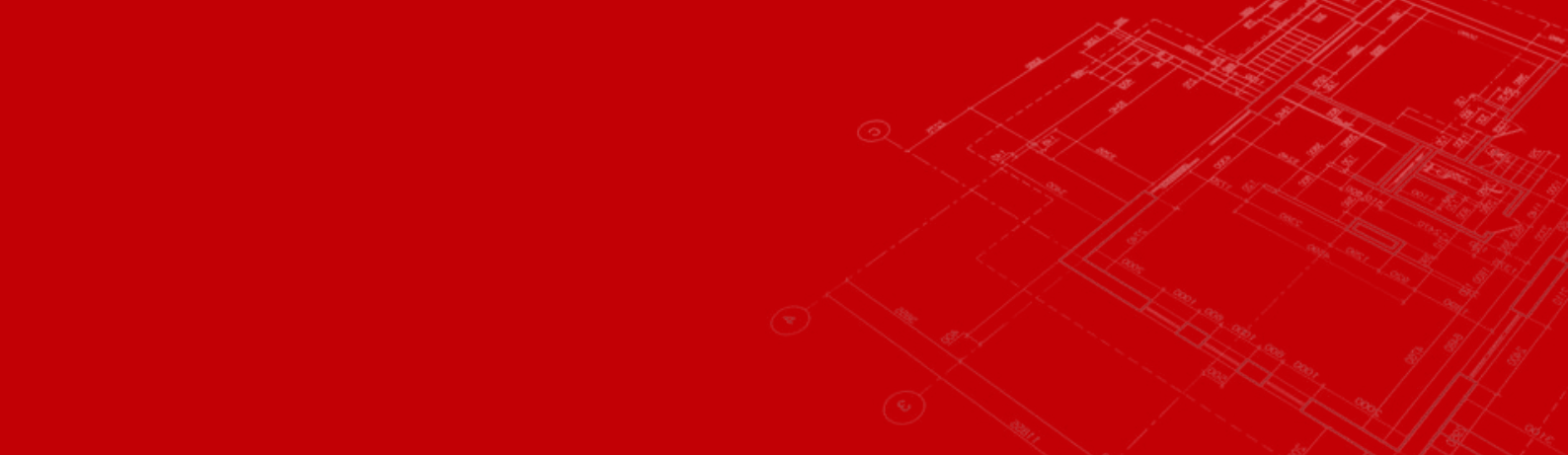
We provide innovative building solutions for any residential or commercial projects, from new-build to refurbishment, inside or out, and in a range of different construction environments.

Our vast product range offers you external wall insulation (EWI) and render systems, versatile and durable waterproofing solutions, high-quality flooring, and a diverse range of high-grade, secure and attractive facade finishes.

Licata's dedicated research and development laboratories perform in-depth analysis on all our materials, and we are proud to provide the most comprehensively tested systems range in compliance with BBA, ETA, ETAG004, ISO9001, and BS476 standards.

Licata Building Systems is your go-to provider of modern, sustainable, superior-quality building solutions that are both effective and affordable.





-  **London, UK**  
2 commercial branches
-  **Kent, UK**  
commercial branch
-  **Birmingham, UK**  
commercial branch
-  **Manchester, UK**  
commercial branch
-  **Essex, UK**  
commercial branch

-  **Sicily, Italy**  
liquid production plant  
powder production plant
-  **Bergamo, Italy**  
liquid production plant  
powder production plant
-  **Padua, Italy**  
special production plant





22.0°C

17:00 - 21:00

# Energy Efficiency & Environmental Protection

## Energy efficiency

Environmental protection and respect for our habitat presuppose necessary conditions such as energy efficiency and rational use of non-renewable resources. To solve global environmental problems such as the greenhouse effect, ozone hole and acid rain, we must first learn how to manage energy resources in an intelligent way. Each of us can contribute significantly to the cause by reducing waste and energy losses.

For years now, the EU directives and the legislation of many countries have been promoting good practices in energy efficiency in all sectors such as the residential sector which alone absorbs almost half of the national energy needs and, consequently, is responsible for much of the carbon dioxide produced. This highlights the fact that the vast majority of existing buildings are affected by important omissions in the design phase, a condition that has meant that these structures and houses were built without taking due account of energy efficiency criteria; Add to this the fact that the same criteria are still systematically ignored both for neglect and for disinformation and, last but not least, because not everyone is willing to change their habits, however counter-productive they may prove to be.

## Benefits

In practical terms, the licatatherm systems have the primary purpose of eliminating the so-called thermal bridges, i.e. parts of the structure which, due to design or construction defects, have different thermal characteristics compared to the surrounding ones. These imperfections cause the exchange of heat between the inside and outside of the building to the detriment of the insulating capacity of the walls. These circumstances force an excessive use of energy only for space heating and cooling. It should also be noted that the thermal flux, concentrating only in a few limited areas, causes the formation of mould and the creation of condensation in the areas that cool. Therefore it is essential to use a continuous envelope, as are the licatatherm systems, to give the buildings the insulation necessary to reduce heat loss and avert the risk of condensation pathologies and the consequent stains on the walls. Added to this are further advantages in terms of building protection: the licatatherm systems, in fact, being a uniform external layer from a construction point of view, are able to minimize the variations in length of the structures caused by the thermal expansions that occur in the presence of heterogeneous materials, as well as greatly improving the mechanical resistance of the walls. In summary, the use of licatatherm increases the comfort of the building by drastically reducing thermal shocks and allowing considerable energy savings, but not only: the external thermal insulation system, improving energy performance and reducing CO2 emissions, automatically increases the economic value of the structure.

It is highlighted, among other things, that the economic aspect, mentioned several times, should not be neglected at all, given the energy costs that are far from low and moreover in progressive and constant increase. A small calculation is enough to realize that the cost of building a licatatherm system is amortized in a few years of substantial savings on bills. Licatatherm is in fact an excellent investment for companies, individuals and institutions and an added value for the building.



## Clay Brick Slips

Licata clay slips are a versatile thin brick cladding that simulates the look of traditional clay brickwork whilst providing greater insulation and more flexibility of style and application.

### Key Features

- A2 fire classification
- Traditional aesthetic
- Quick to install
- High impact resistance
- For Internal & External Use

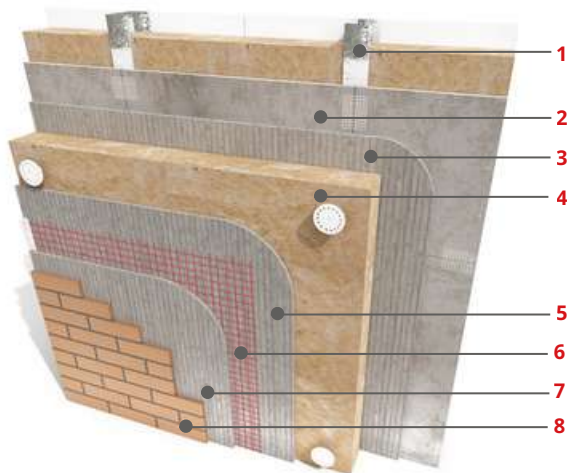
## Products

Our clay slips come in a range of sizes, colours and textures, and are suitable for both internal and external use. Providing modern insulation and greater adaptability whilst giving you that traditional brickwork look that is so popular in the UK.

Suitable for both low and high rise buildings, this is an A2 fire classification brick slip system in accordance with BS EN 13501-1 : 2007.

# LICATA CLAY BRICK SLIP SYSTEM ON STEEL FRAME

Clay Brick slips can be used in conjunction with a Licata Therm External Wall Insulation System on steel framed systems.



SCAN ME TO  
VIEW THE FULL  
SYSTEM ONLINE

## System Components

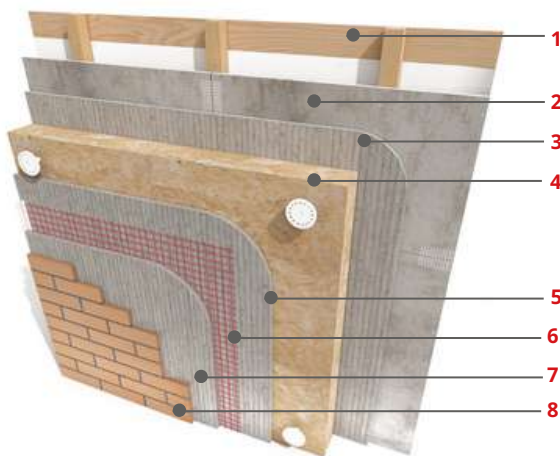
- 1. Steel Frame**
- 2. Licata A1 Rated Fibre Cement Board**
- 3. Adhesive system. Acril Primer plus, to substrate to ensure correct adhesion**
- 4. Insulation Boards achieve insulation values to meet or exceed, stringent requirements of Part 'L' of the building regulations.**
- 5. Reinforcing Coat Raso Plus - a dry adhesive hydraulic and polymer binder, modifying additives and fine grain fillers, vapour permeable. Range of working temperatures from +5 to +30 C. Mixed with around 6.5 litres of clean water per 25kg bag.**
- 6. Reinforcements shall be our fibreglass mesh with a surface treatment coating to provide a high resistance to alkali attack and is manufactured so as to prevent laminar movement and deformation.**
- 7. Licata Clay Brick slips adhesive (Super S1)**
- 8. Clay Brick Slips to create the appearance of a classic brick finish.**

## Features

- Suitable For Steel Frames
- Wide range of colours
- Weather Resistant
- Protects Against Algae & Mould
- Excellent Drying Time
- Breathable & Lightweight
- Durable & Water Repellent
- Great Adhesion & Spreadability

# LICATA CLAY BRICK SLIP SYSTEM ON TIMBER FRAME

Clay Brick slips can be used in conjunction with a Licata Therm External Wall Insulation System on panel substrate-timber framed systems.



SCAN ME TO  
VIEW THE FULL  
SYSTEM ONLINE

## System Components

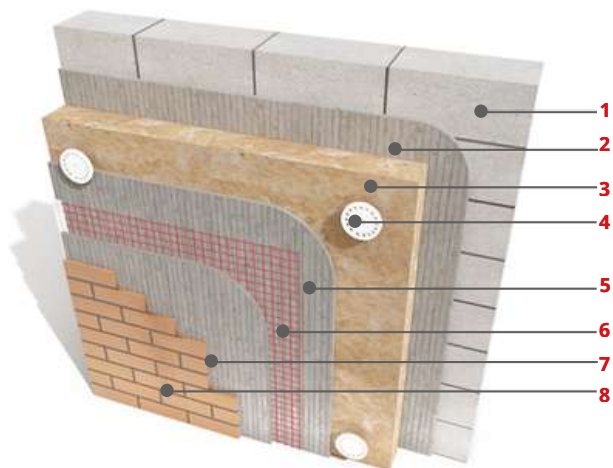
1. Panel substrate timber frame
2. Licata A1 Rated Fibre Cement Board
3. Adhesive system. Acril Primer plus, to substrate to ensure correct adhesion
4. Insulation Boards achieve insulation values to meet or exceed, stringent requirements of Part 'L' of the building regulations.
5. Reinforcing Coat Raso Plus - a dry adhesive hydraulic and polymer binder, modifying additives and fine grain fillers, vapour permeable. Range of working temperatures from +5 to +30 C. Mixed with around 6.5 litres of clean water per 25kg bag.
6. Reinforcements shall be our fibreglass mesh with a surface treatment coating to provide a high resistance to alkali attack and is manufactured so as to prevent laminar movement and deformation.
7. Licata Clay Brick slips adhesive (Super S1)
8. Clay Brick Slips to create the appearance of a classic brick finish.

## Features

- Suitable For Timber Frames
- Wide range of colours
- Weather Resistant
- Protects Against Algae & Mould
- Excellent Drying Time
- Breathable & Lightweight
- Durable & Water Repellent
- Great Adhesion & Spreadability

# LICATA CLAY BRICK SLIP SYSTEM ON BLOCK/BRICK WORK

Clay Brick slips can be used in conjunction with a Licata Therm External Wall Insulation System on block work/brick work.



SCAN ME TO  
VIEW THE FULL  
SYSTEM ONLINE

## System Components

1. Blockwork / brickwork or steel framed systems
2. Adhesive system. Acril Primer plus, to substrate to ensure correct adhesion
3. Insulation Boards achieve insulation values to meet or exceed, stringent requirements of Part 'L' of the building regulations.
4. Fire Barriers to comply with the recommendations of the BRE, horizontal barriers are required to be placed at every floor level above 2 storeys. These barriers comprise of 1200mm x 200mm rock fibre panels, density 140kg/m<sup>3</sup>. The strip is adhered to the substrate in a continuous strip around the building.
5. Reinforcing Coat Raso Plus - a dry adhesive hydraulic and polymer binder, modifying additives and fine grain fillers, vapour permeable. Range of working temperatures from +5 to +30 C. Mixed with around 6.5 litres of clean water per 25kg bag.
6. Reinforcements shall be our fibreglass mesh with a surface treatment coating to provide a high resistance to alkali attack and is manufactured so as to prevent laminar movement and deformation.
7. Licata Clay Brick slips adhesive (Super S1)
8. Clay Brick Slips to create the appearance of a classic brick finish.

## Features

- Suitable For Various Substrates
- Wide range of colours
- Weather Resistant
- Protects Against Algae & Mould
- Excellent Drying Time
- Breathable & Lightweight
- Durable & Water Repellent
- Great Adhesion & Spreadability



# THE URBAN RANGE

Clay Brick Slip



## IRON

Clay Brick Slip

<b>SIZE</b>	215 mm x 65 mm
-------------	----------------



## BLUE

Clay Brick Slip

<b>SIZE</b>	215 mm x 65 mm
-------------	----------------



## NIGHTSKY

Clay Brick Slip

<b>SIZE</b>	215 mm x 65 mm
-------------	----------------



## FOSSIL

Clay Brick Slip

<b>SIZE</b>	215 mm x 65 mm
-------------	----------------



## BLACK SLATE

Clay Brick Slip

<b>SIZE</b>	215 mm x 65 mm
-------------	----------------



## DARK COCOA

Clay Brick Slip

<b>SIZE</b>	215 mm x 65 mm
-------------	----------------



## CHARCOAL

Clay Brick Slip

<b>SIZE</b>	215 mm x 65 mm
-------------	----------------



## APOLLO CHALK

Clay Brick Slip

<b>SIZE</b>	215 mm x 65 mm
-------------	----------------



## REDWOOD

Clay Brick Slip

<b>SIZE</b>	215 mm x 65 mm
-------------	----------------



## PENNY

Clay Brick Slip

<b>SIZE</b>	215 mm x 65 mm
-------------	----------------



## RUST

Clay Brick Slip

<b>SIZE</b>	215 mm x 65 mm
-------------	----------------



## EARTH

Clay Brick Slip

<b>SIZE</b>	215 mm x 65 mm
-------------	----------------



## SMOKEY BROWN

Clay Brick Slip

<b>SIZE</b>	215 mm x 65 mm
-------------	----------------



## TOBACCO

Clay Brick Slip

<b>SIZE</b>	215 mm x 65 mm
-------------	----------------



## RUSTIC AUBURN

Clay Brick Slip

<b>SIZE</b>	215 mm x 65 mm
-------------	----------------



## RUSTIC BLAZE

Clay Brick Slip

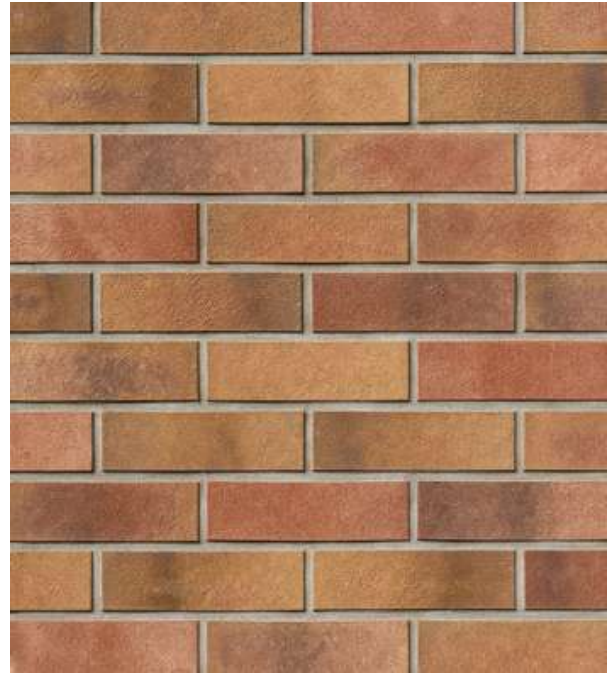
<b>SIZE</b>	215 mm x 65 mm
-------------	----------------



## MOONSTONE

Clay Brick Slip

<b>SIZE</b>	215 mm x 65 mm
-------------	----------------



## SUNRISE

Clay Brick Slip

<b>SIZE</b>	215 mm x 65 mm
-------------	----------------



## POWDERED BRONZE

Clay Brick Slip

<b>SIZE</b>	215 mm x 65 mm
-------------	----------------



## AUTUMN

Clay Brick Slip

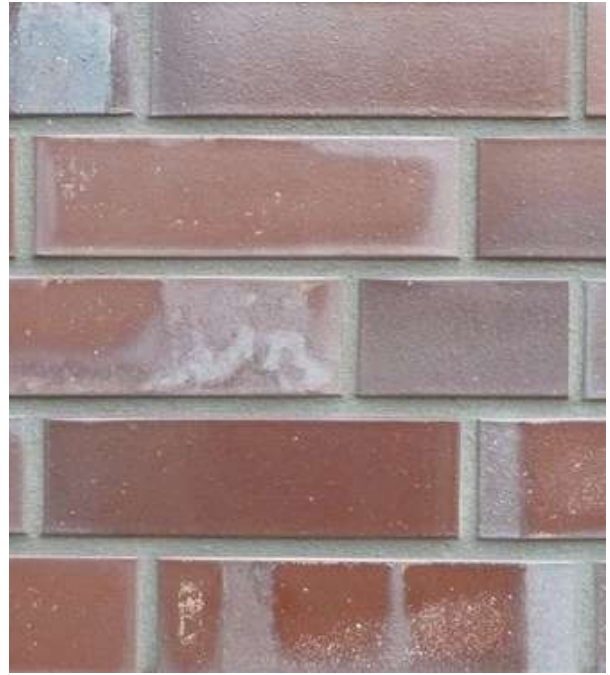
<b>SIZE</b>	215 mm x 65 mm
-------------	----------------



## ANTIQUE

Clay Brick Slip

<b>SIZE</b>	215 mm x 65 mm
-------------	----------------



## CHESTNUT RED

Clay Brick Slip

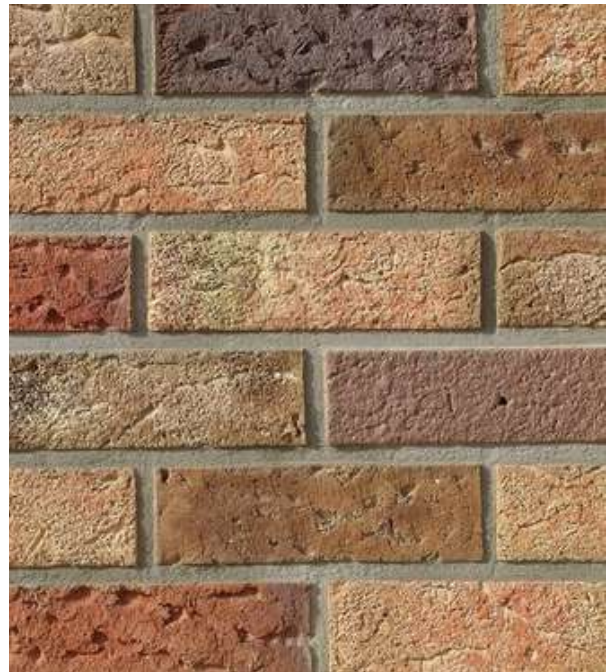
<b>SIZE</b>	215 mm x 65 mm
-------------	----------------



## RUSTIC ORANGE

Clay Brick Slip

<b>SIZE</b>	215 mm x 65 mm
-------------	----------------



## COUNTRY COTTAGE

Clay Brick Slip

<b>SIZE</b>	215 mm x 65 mm
-------------	----------------



## RIPPLE RED

Clay Brick Slip

<b>SIZE</b>	215 mm x 65 mm
-------------	----------------



## COTTAGE MULTI

Clay Brick Slip

<b>SIZE</b>	215 mm x 65 mm
-------------	----------------



## RED SAND

Clay Brick Slip

<b>SIZE</b>	215 mm x 65 mm
-------------	----------------



## RUSTIC RED

Clay Brick Slip

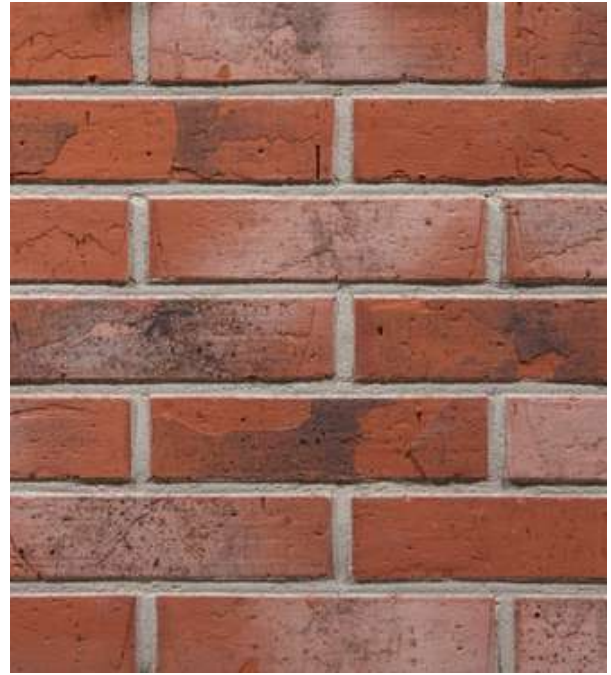
<b>SIZE</b>	215 mm x 65 mm
-------------	----------------



## WHITE WASHED

Clay Brick Slip

<b>SIZE</b>	215 mm x 65 mm
-------------	----------------



## OLD MILLHOUSE

Clay Brick Slip

<b>SIZE</b>	215 mm x 65 mm
-------------	----------------



## SMOKEY RED

Clay Brick Slip

<b>SIZE</b>	215 mm x 65 mm
-------------	----------------



## BURNT ORANGE

Clay Brick Slip

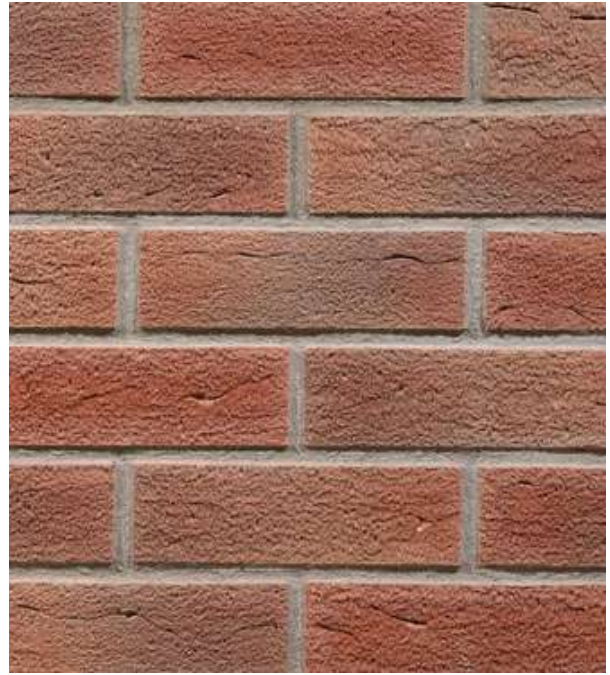
<b>SIZE</b>	215 mm x 65 mm
-------------	----------------



## ORANGE BLAZE

Clay Brick Slip

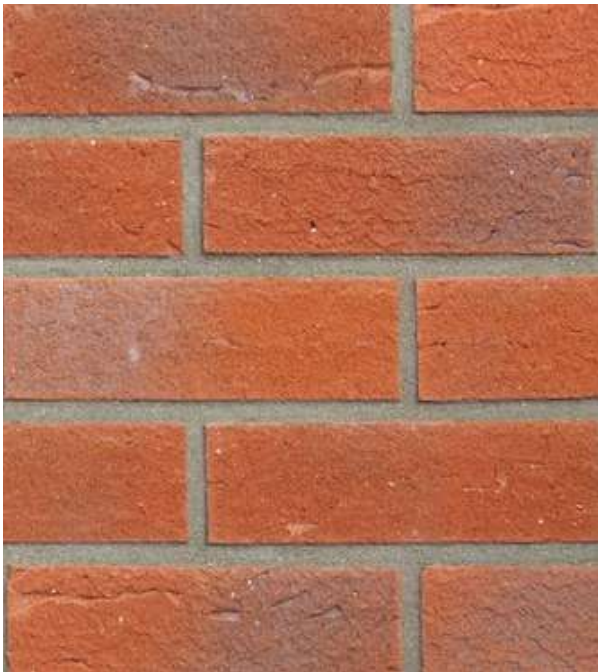
<b>SIZE</b>	215 mm x 65 mm
-------------	----------------



## DEEP RED

Clay Brick Slip

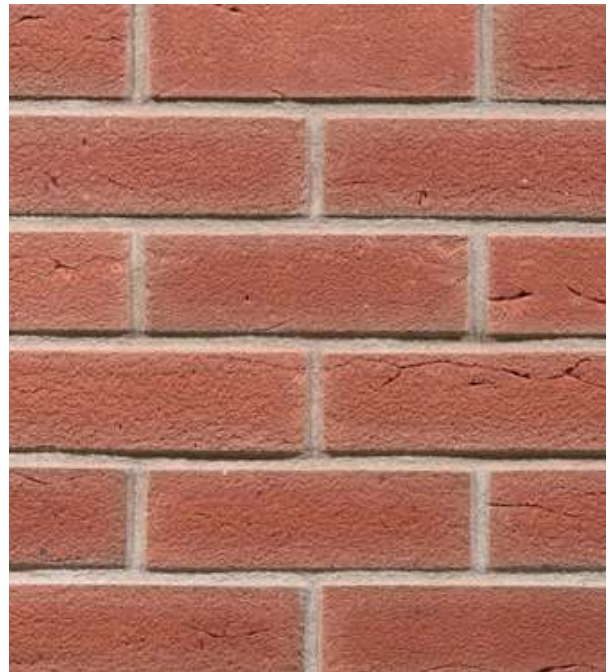
<b>SIZE</b>	215 mm x 65 mm
-------------	----------------



## RED & BLUE FLAME

Clay Brick Slip

<b>SIZE</b>	215 mm x 65 mm
-------------	----------------



## FLAME

Clay Brick Slip

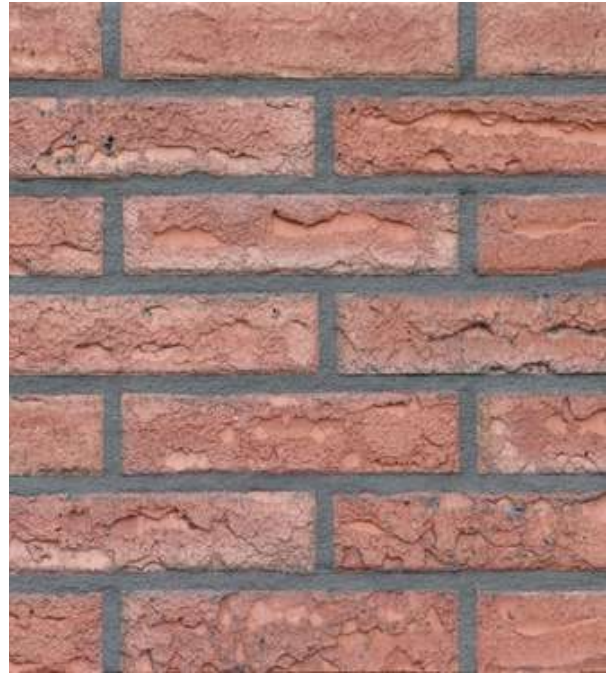
<b>SIZE</b>	215 mm x 65 mm
-------------	----------------



## CORAL

Clay Brick Slip

<b>SIZE</b>	215 mm x 65 mm
-------------	----------------



## VOLCANO

Clay Brick Slip

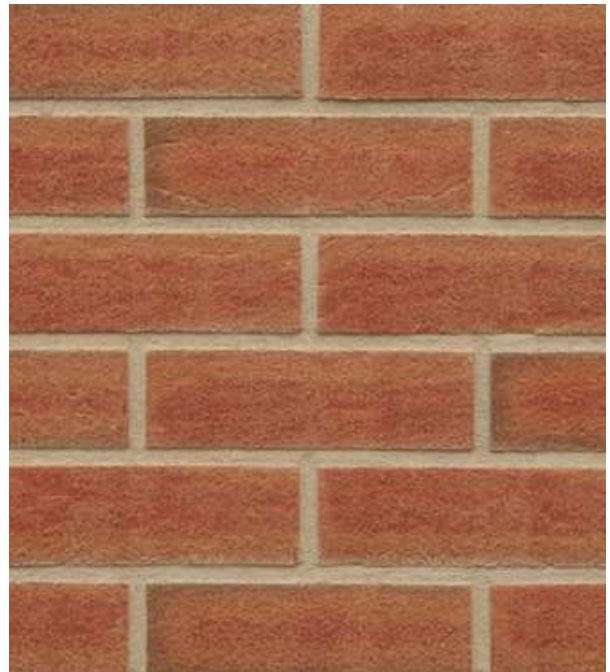
<b>SIZE</b>	215 mm x 65 mm
-------------	----------------



## BLUSH

Clay Brick Slip

<b>SIZE</b>	215 mm x 65 mm
-------------	----------------



## AMBER

Clay Brick Slip

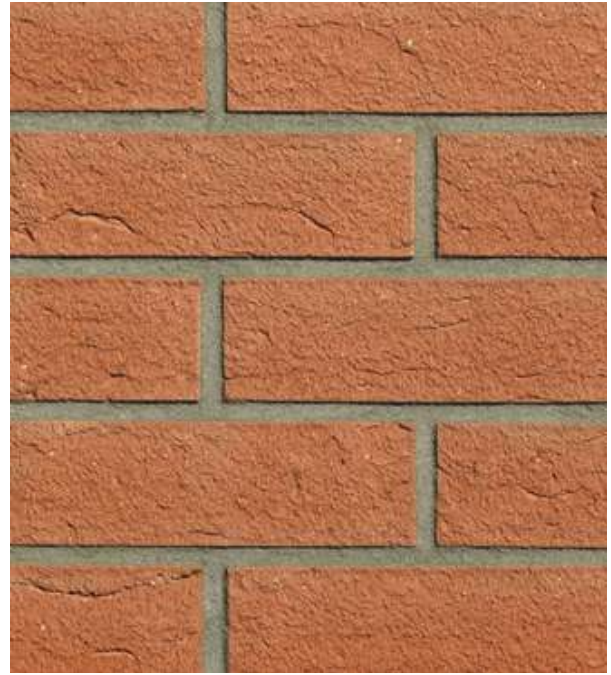
<b>SIZE</b>	215 mm x 65 mm
-------------	----------------



## SIENNA

Clay Brick Slip

<b>SIZE</b>	215 mm x 65 mm
-------------	----------------



## PUMPKIN

Clay Brick Slip

<b>SIZE</b>	215 mm x 65 mm
-------------	----------------



## CANDY

Clay Brick Slip

<b>SIZE</b>	215 mm x 65 mm
-------------	----------------



## POPCORN

Clay Brick Slip

<b>SIZE</b>	215 mm x 65 mm
-------------	----------------



## HONEY

Clay Brick Slip

<b>SIZE</b>	215 mm x 65 mm
-------------	----------------



## HONEYCOMB

Clay Brick Slip

<b>SIZE</b>	215 mm x 65 mm
-------------	----------------



## COTSWOLD MIX

Clay Brick Slip

<b>SIZE</b>	215 mm x 65 mm
-------------	----------------



## BONE

Clay Brick Slip

<b>SIZE</b>	215 mm x 65 mm
-------------	----------------



## MILKY GREY

Clay Brick Slip

<b>SIZE</b>	215 mm x 65 mm
-------------	----------------



## ASH

Clay Brick Slip

<b>SIZE</b>	215 mm x 65 mm
-------------	----------------



## DOVE GREY

Clay Brick Slip

<b>SIZE</b>	215 mm x 65 mm
-------------	----------------



## WHITE SAND

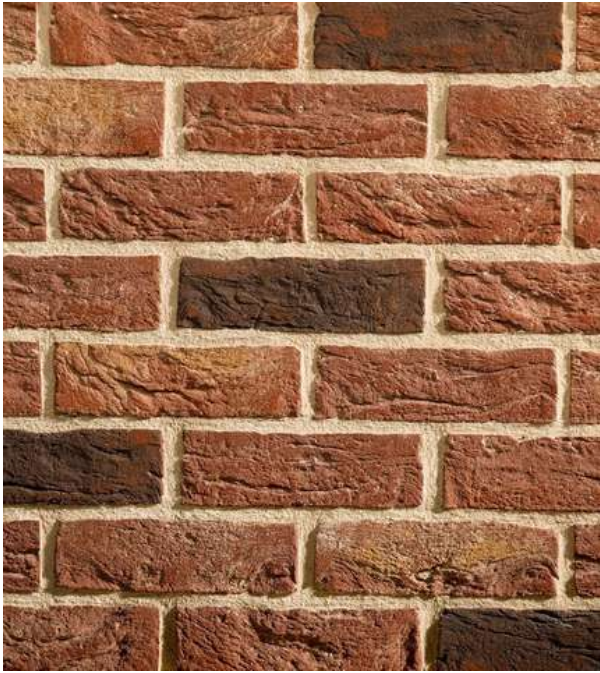
Clay Brick Slip

<b>SIZE</b>	215 mm x 65 mm
-------------	----------------



# THE HERITAGE RANGE

Clay Brick Slip



## ANTIQUE RED

Clay Brick Slip

<b>SIZE</b>	215 mm x 65 mm
-------------	----------------



## RUSTIC SAND

Clay Brick Slip

<b>SIZE</b>	215 mm x 65 mm
-------------	----------------



## TRUFFLE

Clay Brick Slip

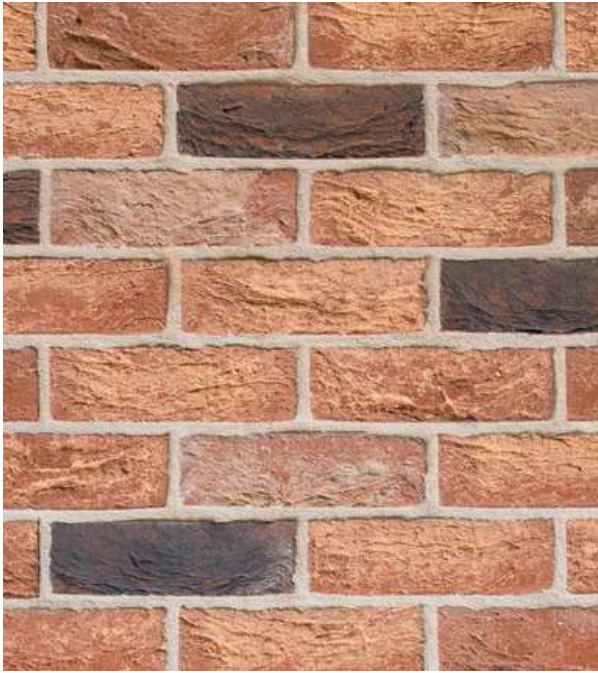
<b>SIZE</b>	215 mm x 65 mm
-------------	----------------



## STORM

Clay Brick Slip

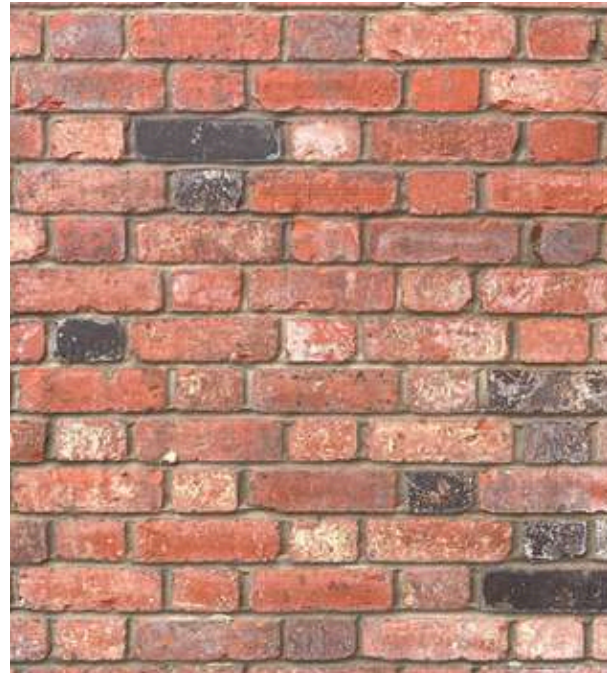
<b>SIZE</b>	215 mm x 65 mm
-------------	----------------



## PUMPKIN SPICE

Clay Brick Slip

<b>SIZE</b>	215 mm x 65 mm
-------------	----------------



## DUSTY RED

Clay Brick Slip

<b>SIZE</b>	215 mm x 65 mm
-------------	----------------



## FROST

Clay Brick Slip

<b>SIZE</b>	215 mm x 65 mm
-------------	----------------



## PAPAYA

Clay Brick Slip

<b>SIZE</b>	215 mm x 65 mm
-------------	----------------



## AGED YELLOW

Clay Brick Slip

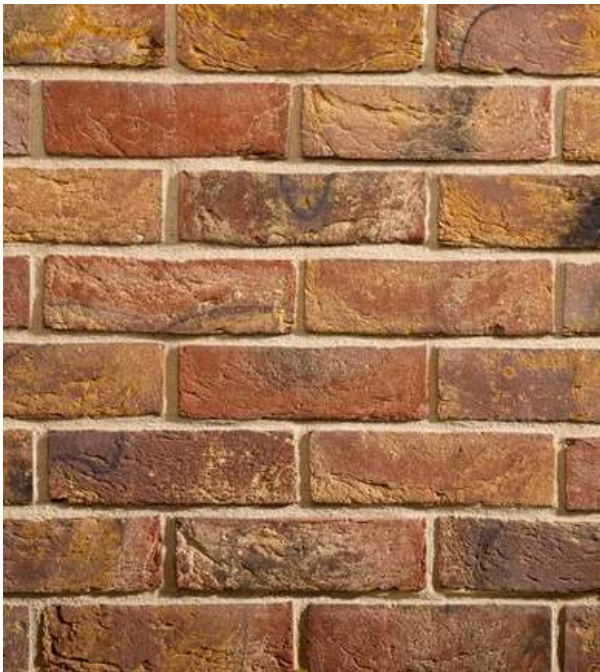
<b>SIZE</b>	215 mm x 65 mm
-------------	----------------



## MOONSHINE

Clay Brick Slip

<b>SIZE</b>	215 mm x 65 mm
-------------	----------------



## BURNT SIENNA

Clay Brick Slip

<b>SIZE</b>	215 mm x 65 mm
-------------	----------------



## BRIE

Clay Brick Slip

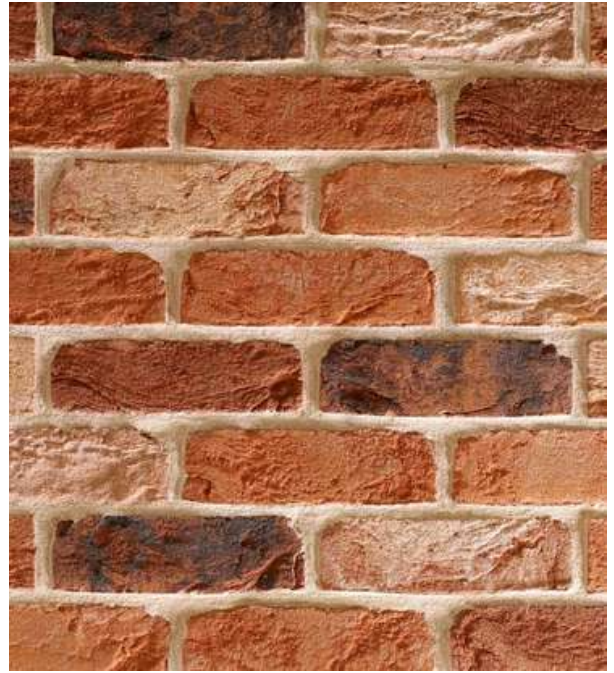
<b>SIZE</b>	215 mm x 65 mm
-------------	----------------



## CREST

Clay Brick Slip

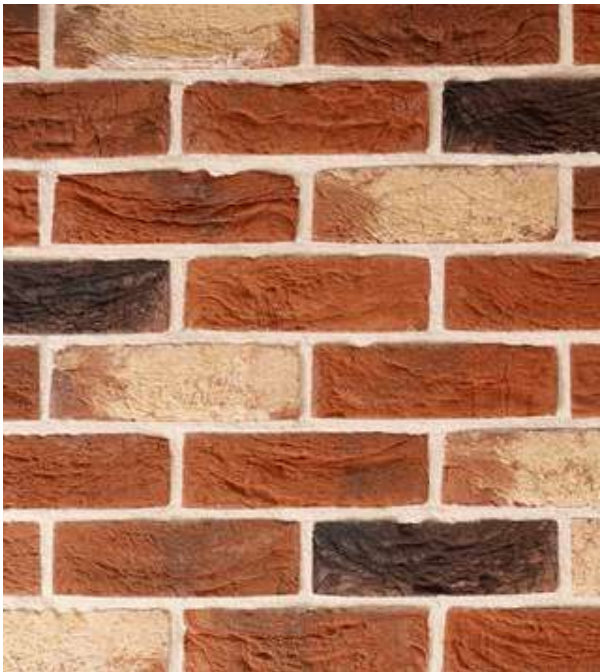
<b>SIZE</b>	215 mm x 65 mm
-------------	----------------



## MARS

Clay Brick Slip

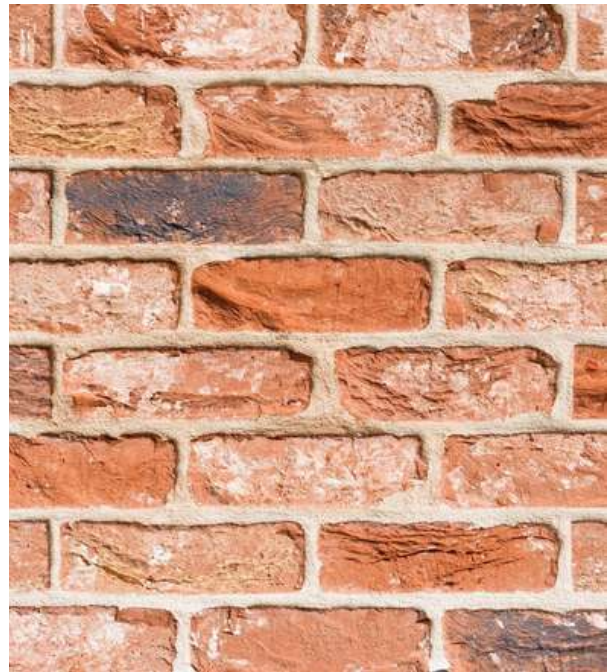
<b>SIZE</b>	215 mm x 65 mm
-------------	----------------



## SAND DUNES

Clay Brick Slip

<b>SIZE</b>	215 mm x 65 mm
-------------	----------------



## SALMON

Clay Brick Slip

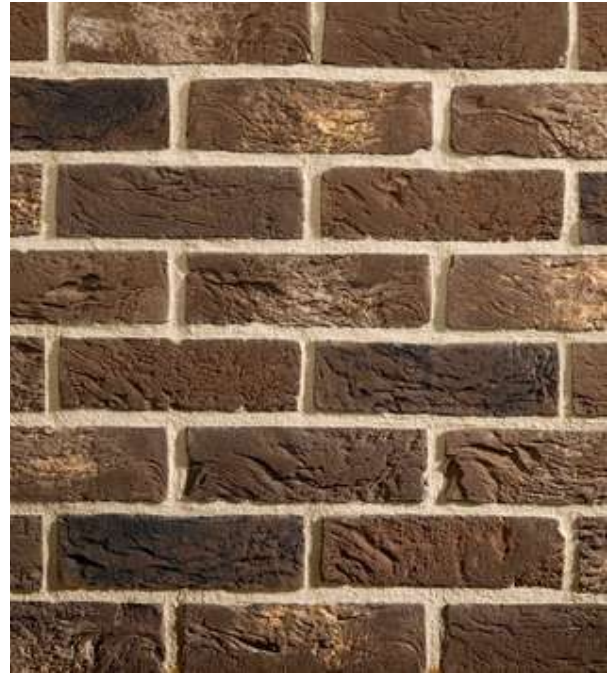
<b>SIZE</b>	215 mm x 65 mm
-------------	----------------



## MUSTARD

Clay Brick Slip

<b>SIZE</b>	215 mm x 65 mm
-------------	----------------



## GOLDEN BROWN

Clay Brick Slip

<b>SIZE</b>	215 mm x 65 mm
-------------	----------------



## RUSTIC PEACH

Clay Brick Slip

<b>SIZE</b>	215 mm x 65 mm
-------------	----------------



## DESERT

Clay Brick Slip

<b>SIZE</b>	215 mm x 65 mm
-------------	----------------



# THE SUBURBIA RANGE

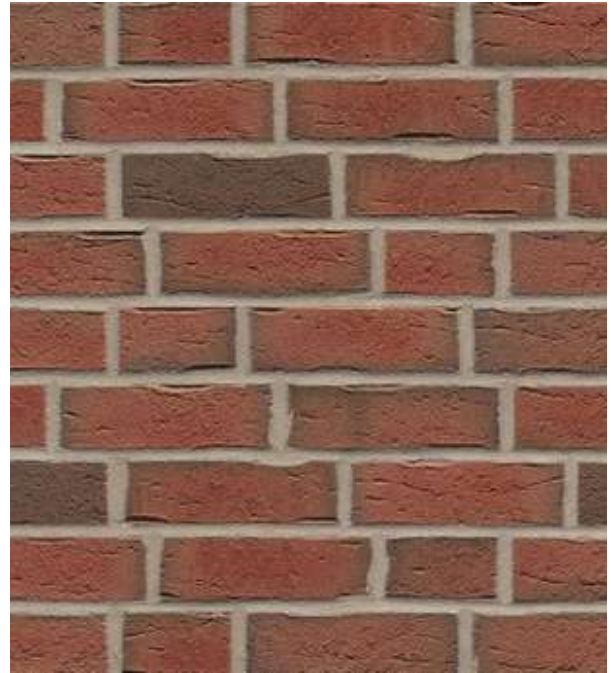
Clay Brick Slip



## GRAPHITE

Clay Brick Slip

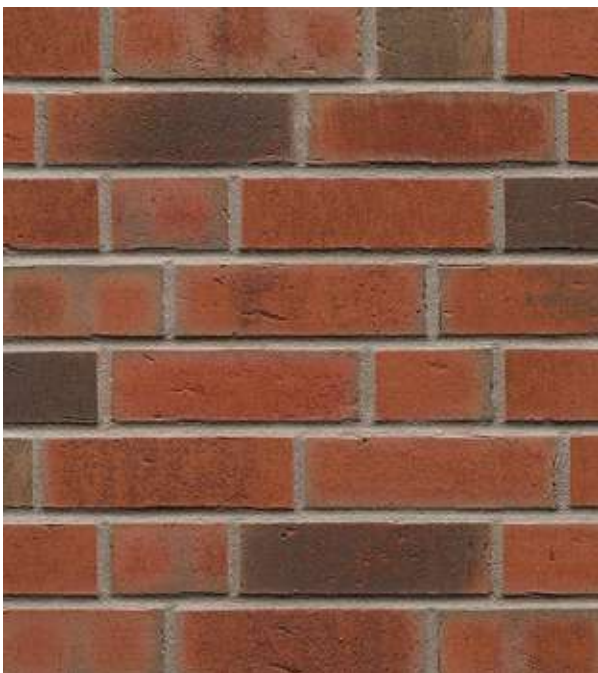
<b>SIZE</b>	215 mm x 65 mm
-------------	----------------



## CHESTNUT

Clay Brick Slip

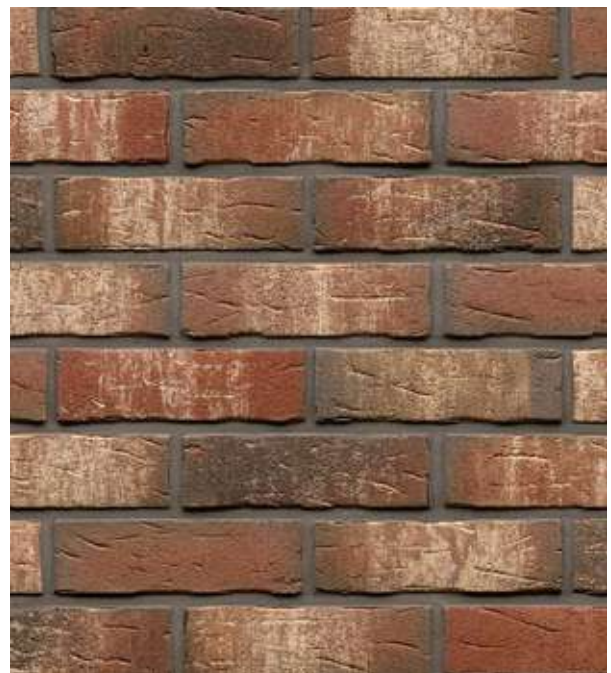
<b>SIZE</b>	215 mm x 65 mm
-------------	----------------



## BURNT UMBER

Clay Brick Slip

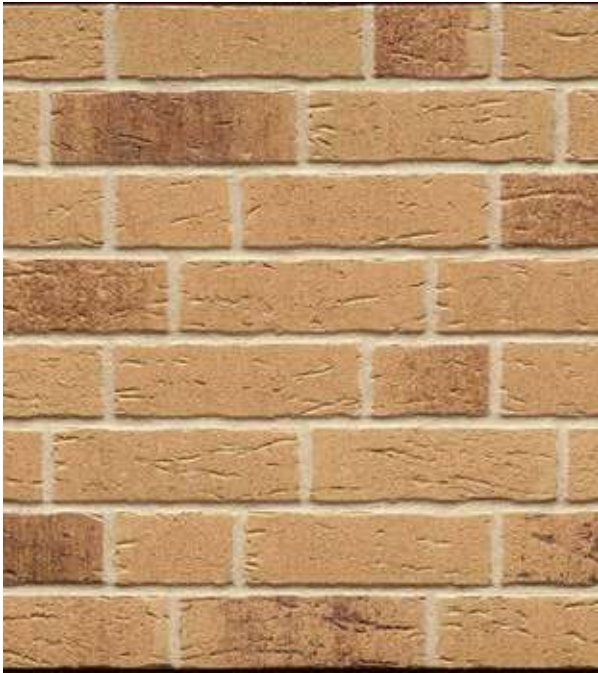
<b>SIZE</b>	215 mm x 65 mm
-------------	----------------



## RUSTIC FLAMES

Clay Brick Slip

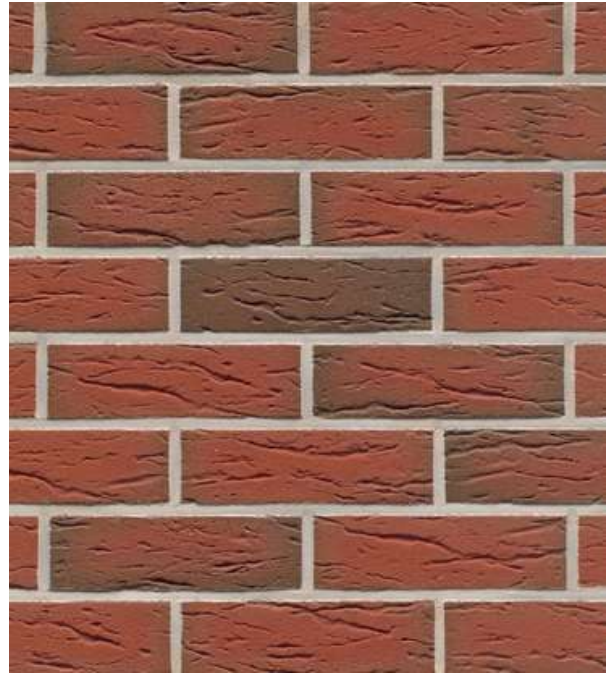
<b>SIZE</b>	215 mm x 65 mm
-------------	----------------



## BURNT SAND

Clay Brick Slip

<b>SIZE</b>	215 mm x 65 mm
-------------	----------------



## RED SEA

Clay Brick Slip

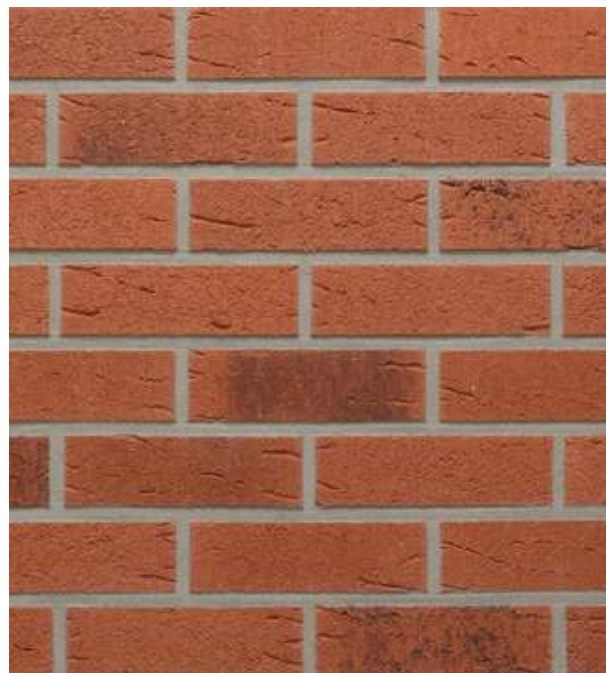
<b>SIZE</b>	215 mm x 65 mm
-------------	----------------



## SMOKEY YELLOW

Clay Brick Slip

<b>SIZE</b>	215 mm x 65 mm
-------------	----------------



## CHARRED RED

Clay Brick Slip

<b>SIZE</b>	215 mm x 65 mm
-------------	----------------



## CHALKY YELLOW

Clay Brick Slip

<b>SIZE</b>	215 mm x 65 mm
-------------	----------------



## VINTAGE GREY

Clay Brick Slip

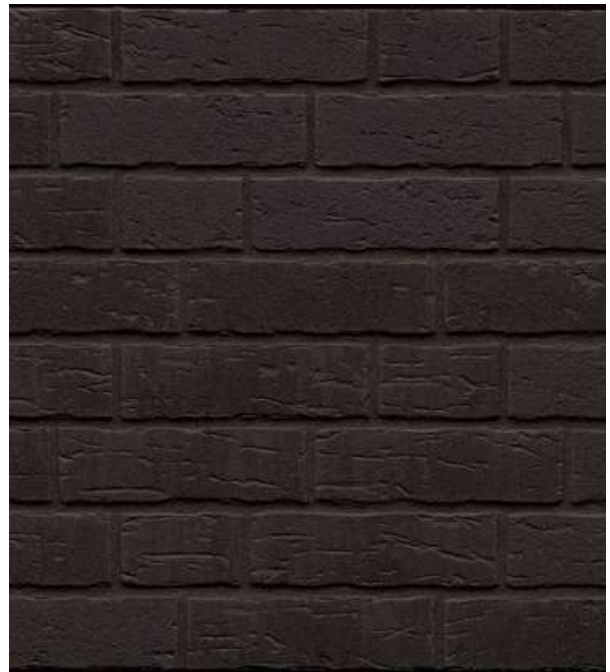
<b>SIZE</b>	215 mm x 65 mm
-------------	----------------



## TWILIGHT

Clay Brick Slip

<b>SIZE</b>	215 mm x 65 mm
-------------	----------------



## JET BLACK

Clay Brick Slip

<b>SIZE</b>	215 mm x 65 mm
-------------	----------------



1.0.0

### **West London**

Unit 6, Hampton Business Park  
Bolney Way, Twickenham  
TW13 6DB

Tel: 020 8894 3372

### **North London**

Unit 5 Brunswick Industrial Park  
Southgate  
N11 1JL

Tel: 020 3987 0200

### **Kent**

Unit 4 Schooner Park  
Schooner Court, Dartford  
DA2 6NW

Tel: 01322 927 600

### **Birmingham**

Unit 17 Frankley Industrial Estate  
Tay Road, Frankley  
B45 0LD

Tel: 0121 667 2412

### **Manchester**

Unit 6C Stanley Green Trading Estate,  
Cheadle Hulme  
SK8 6RB

Tel: 0161 949 0035

### **Essex**

Shades House, Hodgson Way  
Wickford  
SS11 8YD

Tel: 0126 839 5828



**NEW BUILD | REBUILD | RENOVATE**

**[www.licataltd.co.uk](http://www.licataltd.co.uk)**