

Render Systems

NEW BUILD | REBUILD | RENOVATE

www.licataltd.co.uk



Contents

INTRODUCTION

Our philosophy	02
A success story	04
Strategically located for maximum support	05

LICATA RENDER SYSTEMS

Brickwork Render System	09 - 10
Aircrete Blockwork Render System	11 - 12
Concrete Blockwork Render System	13 - 14
Existing Pebbledash Render System	15 - 16
Existing Render/Paint Render System	17 - 18
Steel Frame Render System	19 - 20
ICF Render System	21 - 22
Elastomeric Render System	23 - 24
Plaster Render System	25 - 26
One-Coat Monocouche System	27 - 28
Concrete Render System	29 - 30
Concrete Repair Render System	31 - 32

COLOURS

Top Coat Colour Range	33
Monocouche Colour Range	34

TECHNICAL DATA SHEETS

Monoscratch 300	35	Colorado Spugnato	46
Silicone Render	36	Raso W 160	47
Acrylic Top Coat	37	Raso R 140	48
Silsan Paint	38	Raso Top 800	49
Vitrea Quarzo Acrylic Paint	39	Raso TH 500 Plus	50
Siloxan Paint	40	Artica	51
Aggrappante LG Substrate Primer	41	Fibreglass Mesh	52
Isolante LG Top Coat Primer	42	Hidro Rep	53
Siloxan Primer	43	BetonFIP Passivante	54
Licacem 200	44	Repair 250 N	55
Licacem Fibro	45		

Our Philosophy

To build, rebuild & recover

Colour is emotion: It rekindles memories and sensations in the memory.

Red and white are Licata's identifying colours, making colour its essence. The choice is not accidental. Red recalls the passion that animates the company at every stage, from design to production, and white alludes to the pages of the book to which the company entrusts its history, a story in constant evolution. Team spirit is its strength, whoever is part of it feels the protagonist in the realisation of the company mission:

BUILD, REBUILD, RECOVER.

Strong in the past and with a drive towards innovation. The company builds its own identity on the dialogue between past and future: projected towards innovation with a solid synergy between the needs of eco-compatibility, economy, functionality and living comfort.

Advanced technology for efficiency and productivity

Research and development are a constant commitment of Licata, which invests in innovative technologies and up-to-date, specialised personnel.

The laboratories not only carry out an in-depth analysis of incoming raw materials and finished materials but are also geared towards the development of solutions that are in step with the times and meet the increasingly pressing need for sustainable choices that combine environmental protection with functionality and economy.

The plants are state-of-the-art and ensure the entire production chain is fast and efficient.



Over 40 Years of Research & Development



A Success Story

Licata has its roots in Italy in the early 1980s is now positioned in the professional building sector as a relevant producer of systems and solutions for conservative refurbishment as well as innovative systems for new buildings.

Our dedication to innovation through extensive research, development and testing helped drive decades of growth. This is how we continue to provide top-quality building solutions here in the UK.



We provide innovative building solutions for any residential or commercial projects, from new-build to refurbishment, inside or out, and in a range of different construction environments.

Our vast product range offers you external wall insulation (EWI) and render systems, versatile and durable waterproofing solutions, high-quality flooring, and a diverse range of high-grade, secure and attractive facade finishes.


Licata's dedicated research and development laboratories perform in-depth analysis on all our materials, and we are proud to provide the most comprehensively tested systems range in compliance with BBA, ETA, ETAG004, ISO9001, and BS476 standards.

Licata Building Systems is your go-to provider of modern, sustainable, superior-quality building solutions that are both effective and affordable.





Strategically Located for Maximum Support

Licata Render Systems operates across the UK and Europe, with strategically placed branches and production plants to ensure fast, reliable service and product availability. Our strong presence in both commercial and manufacturing hubs allows us to support contractors, architects, and distributors with industry-leading façade solutions.


 **London, UK**
2 commercial branches


 **Kent, UK**
commercial branch

 **Birmingham, UK**
commercial branch

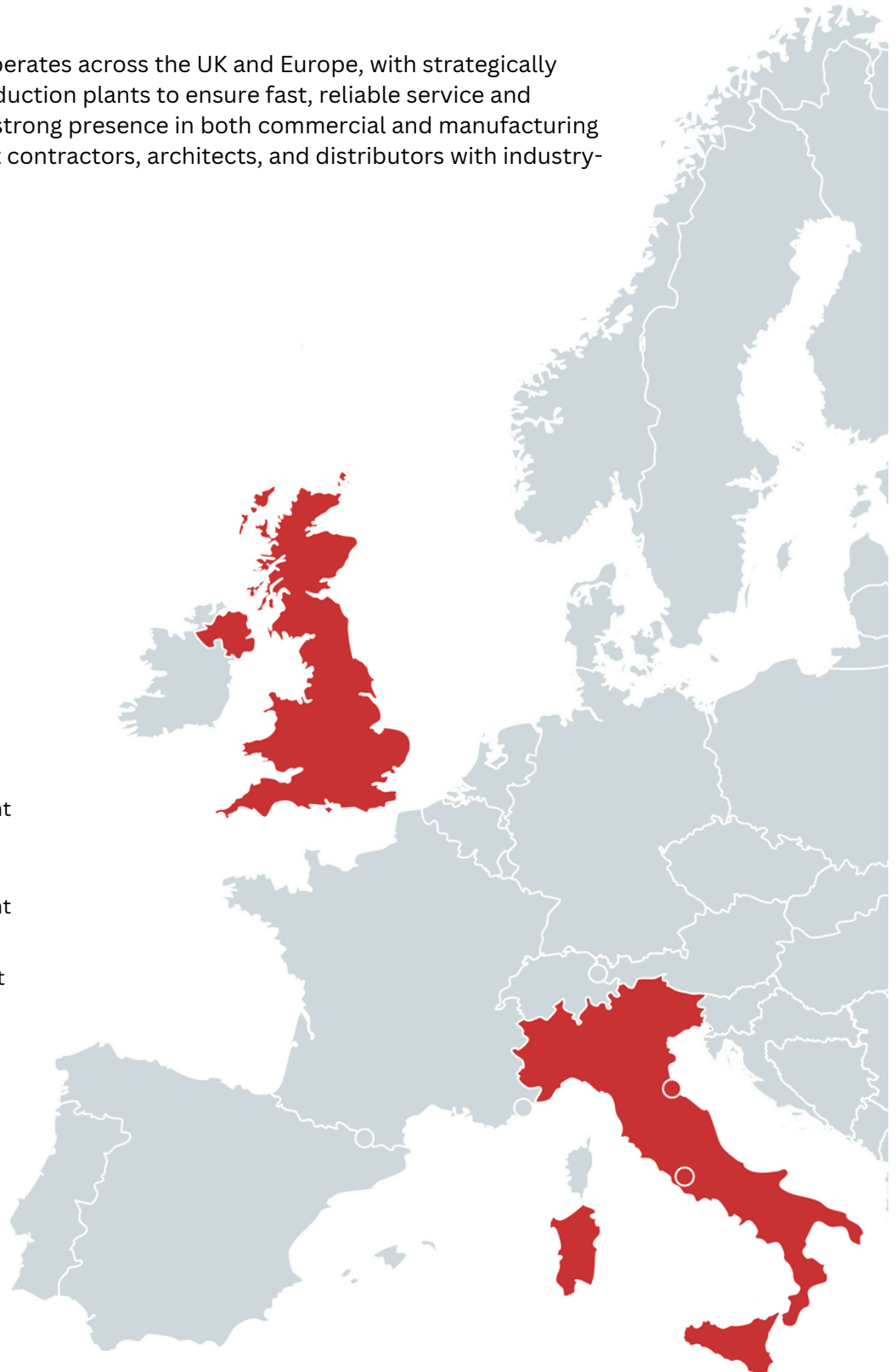
 **Manchester, UK**
commercial branch

 **Essex, UK**
commercial branch

 **Sicily, Italy**
liquid production plant
powder production plant

 **Bergamo, Italy**
liquid production plant
powder production plant

 **Padua, Italy**
special production plant





Beechview Drive, Waltham Abbey, EN9

Licata Render Systems

At Licata, we develop innovative render solutions built for performance, durability, and aesthetic excellence. Our systems are designed to meet the demands of modern construction, whether you're working on new builds, refurbishments, or large-scale commercial projects. In the following pages, you'll find a comprehensive overview of our render systems, each tailored to deliver long-lasting results across a variety of substrates and applications.

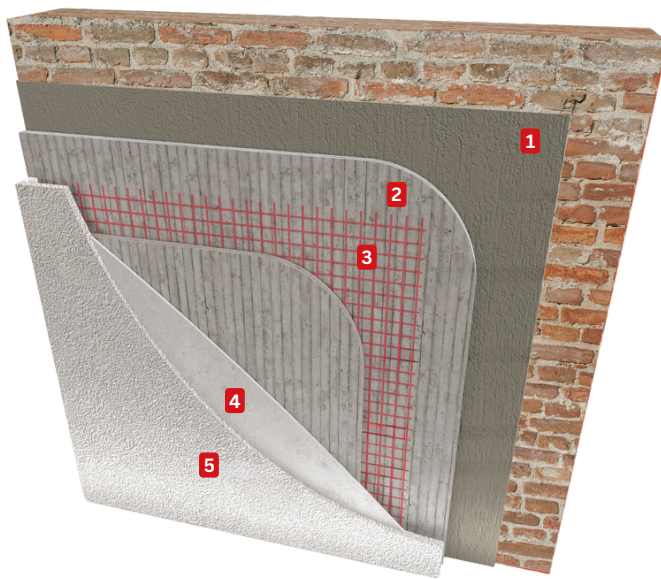




Wick Tower, London, SE18

Brickwork Render System

The Licata Brickwork Render System is specially designed for direct application onto traditional brick substrates. This high-performance render solution includes a flexible basecoat, mesh reinforcement, primer, and a choice of silicone or mineral finish. It effectively bridges minor cracks, improves thermal performance, and enhances the appearance of tired or uneven brickwork. Ideal for both refurbishment and new build projects, the system provides a clean, modern finish with excellent breathability, weather resistance, and long-term durability.



- 1** Levelling Coat
- 2** Base Coat
- 3** Fibreglass Mesh
- 4** Top Coat Primer
- 5** Top Coat Finish

Key Features

- Flexible Basecoat with Mesh: Absorbs movement and bridges hairline cracks in brickwork.
- High Adhesion: Specially formulated to bond directly to brick surfaces.
- Breathable Composition: Allows trapped moisture to escape, preventing damp issues.
- Water-Resistant Finishes: Silicone or mineral topcoats offer long-lasting protection against rain.
- Wide Range of Finishes: Choose from smooth, textured, or coloured finishes to suit any style.
- Anti-Crack System Design: Reinforced to handle common brick substrate imperfections.

Benefits

- Restores Old Brickwork: Covers defects and delivers a refreshed, uniform appearance.
- Weather Protection: Shields brickwork from rain, frost, and environmental wear.
- Low Maintenance: Silicone finishes have self-cleaning properties to stay looking fresh.
- Improved Energy Efficiency: Can help reduce heat loss when combined with insulation.
- Quick Installation: Fast application with minimal disruption to property occupants.
- System Warranty Available: Confidence in quality when installed by approved applicators.



Brickwork Render System

PRIMER (optional)

Acril Primer



Transparent primer for wall coverings, consolidating and high penetration.

Aggrapante Substrate Primer



Ready-to-use pigmented primer with high adhesion on smooth or absorbent substrates.

OR

LEVELLING COAT (optional)

Licacem 200



High performance, fibre-reinforced plaster mortar.

BASE COAT

Raso W160



Fibre-reinforced skim coat/adhesive for exterior insulation systems.

Raso Top 800



Fibre-reinforced skim coat/adhesive, certified for licataTHERM ETA/EAD systems.

OR

Fibreglass Mesh



Reinforced glass fibre mesh, alkali-resistant.

PRIMER & DECORATIVE COAT

Isolante LG Primer



Ready-to-use universal acrylic pigmentable primer with high coverage.

Lerici Top Coat



Decorative acrylic paste coating, water-repellent and mould-resistant

Siloxan Top Coat

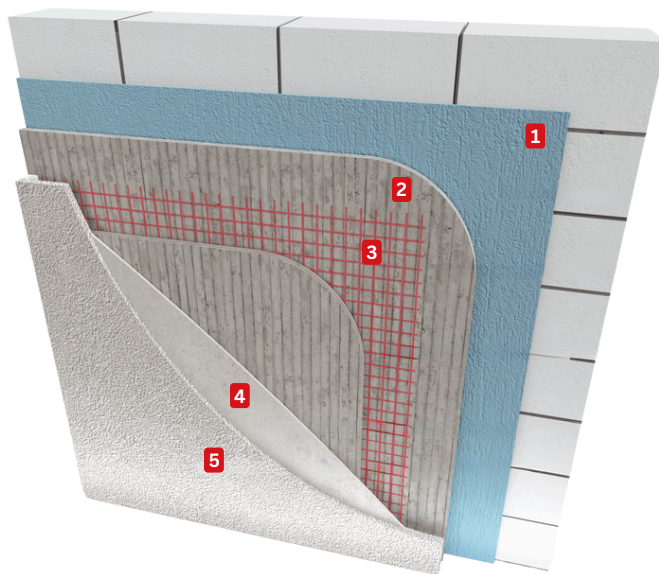


Waterproof, transpiring and mould-resistant acryl-siloxane silicone paste coating.

OR

Aircrete Blockwork Render System

The Licata Aircrete Blockwork Render System is a high-performance solution designed for new and existing blockwork substrates. Engineered for durability and long-term protection, the system includes a substrate primer, basecoat with mesh reinforcement, a primer, and a silicone or mineral topcoat. It offers excellent breathability, water resistance, and crack resistance, making it ideal for both residential and commercial projects. With a wide range of finishes and colours, the Licata Aircrete Blockwork Render System delivers a clean, modern look while ensuring reliable weather protection and minimal maintenance.



- 1** Substrate Primer
- 2** Base Coat
- 3** Fibreglass Mesh
- 4** Top Coat Primer
- 5** Top Coat Finish

Key Features

- **Reinforced Base Coat:** Mesh-reinforced for increased crack resistance and substrate stability.
- **Breathable System:** Allows moisture to escape, reducing the risk of trapped damp.
- **Water-Repellent Finish:** Silicone or mineral topcoats repel rain while remaining vapour permeable.
- **Flexible Design Options:** Available in a wide range of textures and colours.
- **UV Resistant:** Long-lasting colour and finish, even under harsh sun exposure.
- **Compatible with Add-Ons:** Can be used with corner beads, trims, and architectural detailing.

Benefits

- **Enhanced Durability:** Protects blockwork from weathering, impact, and movement.
- **Low Maintenance:** Self-cleaning properties (with silicone finish) reduce ongoing upkeep.
- **Improved Aesthetics:** Transforms plain blockwork into a sleek, high-end façade.
- **Faster Installation:** Simplified system with proven application methods for quicker turnaround.
- **Cost-Effective:** Long lifespan and minimal maintenance offer excellent long-term value.
- **System Warranty Available:** Peace of mind with backed performance when installed by approved contractors.



Aircrete Blockwork Render System

SUBSTRATE PRIMER

Aggrappante Substrate Primer



Ready-to-use primer with high adhesion on smooth or absorbent substrates.

BASE COAT

Raso R140



Fibre-reinforced skim coat for rough plasters and insulating panels.

Raso W160



OR

Fibre-reinforced skim coat/adhesive for exterior insulation systems.

Fibreglass Mesh



Glass fibre mesh, alkali-resistant, certified according to ETAG 004.

PRIMER & DECORATIVE COAT

Isolante LG Primer



Ready-to-use universal acrylic pigmentable primer with high coverage.

Lerici Top Coat



Decorative acrylic paste coating, water-repellent and mould-resistant

OR

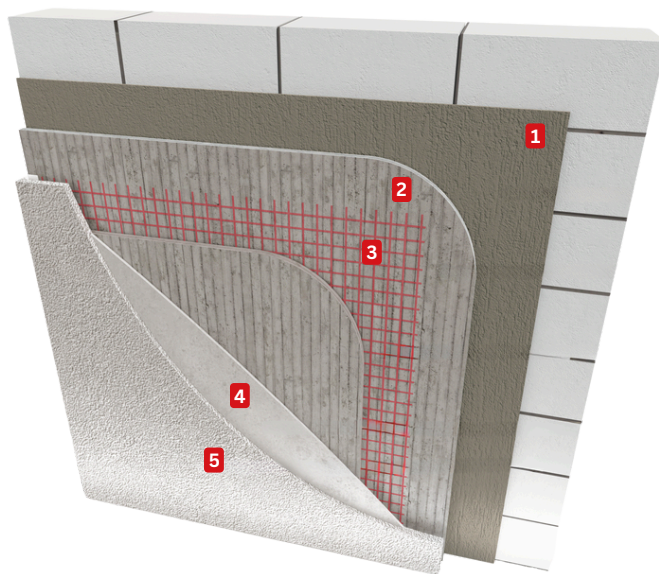
Siloxan Top Coat



Waterproof, transpiring and mould-resistant acryl-siloxane silicone paste coating.

Concrete Blockwork Render System

The Licata Concrete Blockwork Render System is a high-performance solution designed for new and existing concrete blockwork substrates. Engineered for durability and long-term protection, the system includes a basecoat with mesh reinforcement, a primer, and a silicone or mineral topcoat. It offers excellent breathability, water resistance, and crack resistance, making it ideal for both residential and commercial projects. With a wide range of finishes and colours, the Licata Concrete Blockwork Render System delivers a clean, modern look while ensuring reliable weather protection and minimal maintenance.



- 1** **Levelling Coat**
requirement based on the condition of the substrate.
- 2** **Base Coat**
- 3** **Fibreglass Mesh**
- 4** **Top Coat Primer**
- 5** **Top Coat Finish**

Key Features

- **Reinforced Base Coat:** Mesh-reinforced for increased crack resistance and substrate stability.
- **Breathable System:** Allows moisture to escape, reducing the risk of trapped damp.
- **Water-Repellent Finish:** Silicone or mineral topcoats repel rain while remaining vapour permeable.
- **Flexible Design Options:** Available in a wide range of textures and colours.
- **UV Resistant:** Long-lasting colour and finish, even under harsh sun exposure.
- **Compatible with Add-Ons:** Can be used with corner beads, trims, and architectural detailing.

Benefits

- **Enhanced Durability:** Protects blockwork from weathering, impact, and movement.
- **Low Maintenance:** Self-cleaning properties (with silicone finish) reduce ongoing upkeep.
- **Improved Aesthetics:** Transforms plain blockwork into a sleek, high-end façade.
- **Faster Installation:** Simplified system with proven application methods for quicker turnaround.
- **Cost-Effective:** Long lifespan and minimal maintenance offer excellent long-term value.
- **System Warranty Available:** Peace of mind with backed performance when installed by approved contractors.



Concrete Blockwork Render System

PRIMER (optional)

Acril Primer



Transparent primer for wall coverings, consolidating and high penetration.

Aggrapante Substrate Primer



Ready-to-use pigmented primer with high adhesion on smooth or absorbent substrates.

LEVELLING COAT

Licacem 200



High performance, fibre-reinforced plaster mortar.

BASE COAT

Raso W160



Fibre-reinforced skim coat/adhesive for exterior insulation systems.

OR

Raso Top 800



Fibre-reinforced skim coat/adhesive, certified for licataTHERM ETA/EAD systems.

Fibreglass Mesh



Reinforced glass fibre mesh, alkali-resistant.

PRIMER & DECORATIVE COAT

Isolante LG Primer



Ready-to-use universal acrylic pigmentable primer with high coverage.

Lerici Top Coat



Decorative acrylic paste coating, water-repellent and mould-resistant

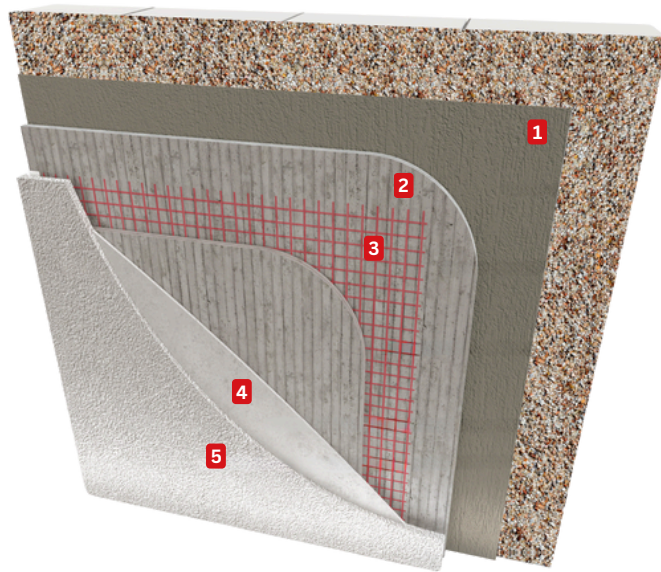
Siloxan Top Coat



Waterproof, transpiring and mould-resistant acryl-siloxane silicone paste coating.

Existing Pebbledash Render System

The Licata Existing Pebbledash Render System is designed to upgrade and modernise pebbledash façades without the need for full removal. Applied over sound, stable pebbledash, the system includes a levelling basecoat, mesh reinforcement, primer, and a high-performance silicone or mineral finish. It smooths out rough textures, enhances aesthetics, and improves weather resistance. Ideal for refurbishments, this system transforms dated exteriors into clean, contemporary surfaces while maintaining breathability and long-term protection.



- 1** Levelling Coat
requirement based on the condition of the substrate.
- 2** Base Coat
- 3** Fibreglass Mesh
- 4** Top Coat Primer
- 5** Top Coat Finish

Key Features

- **Levelling Basecoat:** Smooths over rough pebbledash texture for a clean finish.
- **Mesh Reinforcement:** Adds strength and flexibility to reduce cracking over uneven substrates.
- **High-Adhesion Primers:** Designed for bonding to challenging surfaces like pebbledash.
- **Breathable Silicone or Mineral Finish:** Allow moisture to escape while protecting against water ingress.
- **Wide Colour & Texture Range:** Customisable finishes to modernise outdated façades.
- **No Full Removal Required:** Can be applied directly to sound pebbledash, saving time and cost.

Benefits

- **Modernises Appearance:** Instantly transforms tired, dated exteriors into smooth, contemporary surfaces.
- **Cost-Effective:** Avoids the high cost and disruption of full pebbledash removal.
- **Durable & Weatherproof:** Protects against rain, frost, and UV damage for long-lasting performance.
- **Low Maintenance:** Silicone finishes have self-cleaning properties to stay looking fresh for longer.
- **Improved Insulation Potential:** Can be paired with external wall insulation for energy efficiency.
- **System Warranty Available:** Covered when installed by Licata-approved contractors.



Existing Pebbledash Render System

LEVELLING COAT

Licacem 200



Plaster mortar with reduced shrinkage from moisture loss.

OR

Licacem Fibro



High performance, fibre-reinforced plaster mortar.

BASE COAT

Raso R140



Fibre-reinforced skim coat for rough plasters and insulating panels.

OR

Raso W160



Fibre-reinforced skim coat/adhesive for exterior insulation systems.

Fibreglass Mesh



Reinforced glass fibre mesh, alkali-resistant.

PRIMER & DECORATIVE COAT

Isolante LG Primer



Ready-to-use universal acrylic pigmentable primer with high coverage.

Lerici Top Coat



Decorative acrylic paste coating, water-repellent and mould-resistant

OR

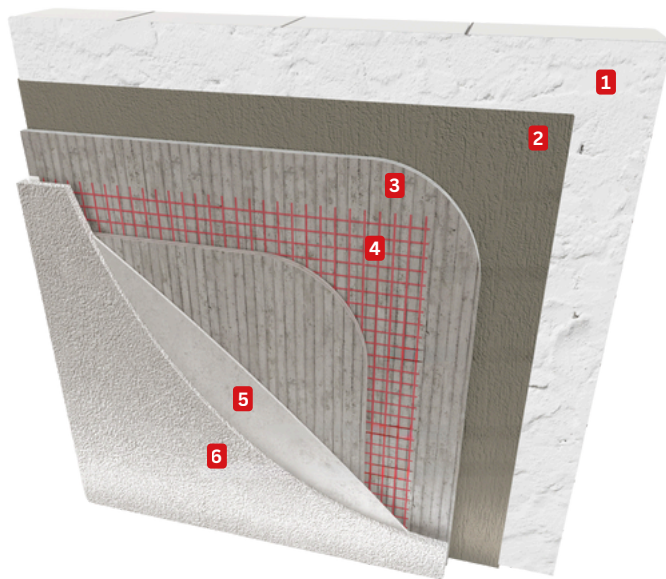
Siloxan Top Coat



Waterproof, transpiring and mould-resistant acryl-siloxane silicone paste coating.

Existing Render/Paint Render System

The Licata Existing Render/Paint Render System is designed for refurbishing properties with sound but aged render or painted surfaces. It allows for a fresh new finish without the need to fully remove the existing layer. The system includes a specialist bonding primer, optional mesh-reinforced basecoat, and a breathable, water-resistant silicone or mineral topcoat. It's ideal for giving tired façades a modern look while improving durability, weather protection, and surface integrity. Perfect for both residential and commercial refurbishments with minimal disruption.



- 1** Substrate Primer
- 2** Levelling Coat
- 3** Base Coat
- 4** Fibreglass Mesh
- 5** Top Coat Primer
- 6** Top Coat Finish

Key Features

- **High-Adhesion Primers:** Engineered to bond securely to painted or previously rendered surfaces.
- **Mesh-Reinforced Basecoat:** Used where extra strength or crack resistance is required.
- **Breathable Finishes:** Silicone or mineral finishes allow moisture vapour to escape.
- **Water-Repellent Finishes:** Offers excellent weather protection while maintaining breathability.
- **Flexible Application:** Can be applied to a wide range of existing substrates.
- **Customisable Finish:** Available in a wide selection of colours and textures to suit any building style.

Benefits

- **Refreshed Appearance:** Instantly revives tired or patchy façades with a clean, modern look.
- **No Full Removal Required:** Saves time, labour, and cost by going over existing surfaces.
- **Long-Lasting Protection:** Durable against UV, rain, and environmental wear.
- **Low Maintenance:** Silicone finishes help reduce staining and surface buildup.
- **Fast Installation:** Minimal disruption to building occupants during application.
- **System Warranty Available:** Quality assurance when installed by Licata-approved applicators.





Existing Render/Paint Render System

PRIMER

Aggrapante Substrate Primer



Ready-to-use primer with high adhesion on smooth or absorbent substrates.

LEVELLING COAT

Licacem 200



High performance, fibre-reinforced plaster mortar.

BASE COAT

Raso R140



Fibre-reinforced skim coat for rough plasters and insulating panels.

Raso W160



Fibre-reinforced skim coat/adhesive for exterior insulation systems.

Fibreglass Mesh



Reinforced glass fibre mesh, alkali-resistant.

OR

PRIMER & DECORATIVE COAT

Isolante LG Primer



Ready-to-use universal acrylic pigmentable primer with high coverage.

Lerici Top Coat



Decorative acrylic paste coating, water-repellent and mould-resistant

Siloxan Top Coat



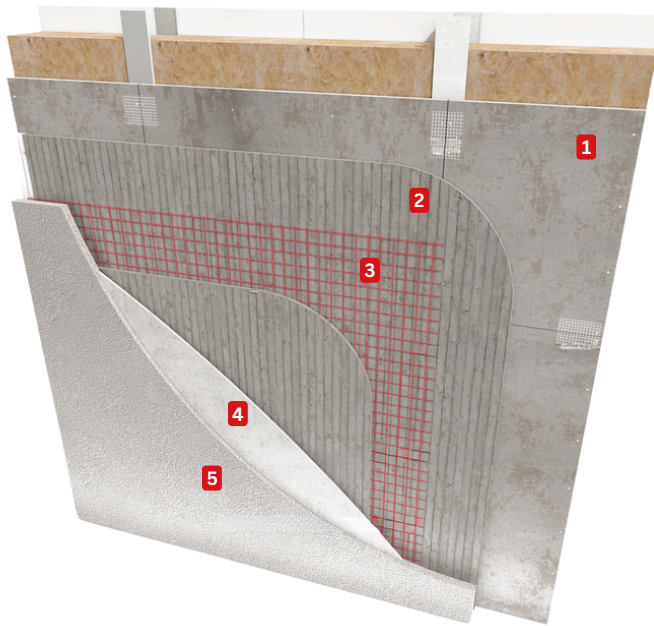
Waterproof, transpiring and mould-resistant acryl-siloxane silicone paste coating.

OR



Steel Frame Render System

The Licata Steel Frame Render System is a lightweight, high-performance solution designed specifically for steel frame constructions. Built for strength and flexibility, this system includes a cement-based carrier board, mesh-reinforced basecoat, primer, and a breathable silicone or mineral topcoat. It accommodates movement in the structure while providing a seamless, weather-resistant finish. Ideal for modern builds and modular construction, the system delivers excellent thermal performance, fire resistance, and a clean, contemporary aesthetic with long-term durability.



- 1** Cement Board
- 2** Base Coat
- 3** Fibreglass Mesh
- 4** Top Coat Primer
- 5** Top Coat Finish

Key Features

- **Cement-Based Carrier Board:** Provides a strong, stable surface ideal for steel frame substrates.
- **Mesh-Reinforced Basecoat:** Increases flexibility and resists cracking from structural movement.
- **Breathable Finishes:** Silicone or mineral topcoats allow vapour to escape while repelling water.
- **Lightweight System:** Designed to add minimal load to lightweight steel frame constructions.
- **Fire-Resistant Components:** Compatible with fire-rated boards and systems.
- **Versatile Aesthetics:** Available in a wide range of colours and textures to suit modern designs.

Benefits

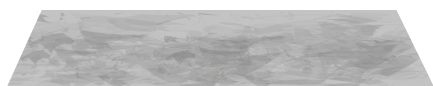
- **Ideal for New Build Projects:** Tailored for steel frame, modular, and off-site construction methods.
- **Durable & Long-Lasting:** Withstands weather, UV exposure, and thermal movement.
- **Improved Energy Efficiency:** Can be combined with insulation for enhanced thermal performance.
- **Quick & Efficient Installation:** Prefabricated elements and fast-application render speed up build time.
- **Low Maintenance:** Silicone topcoat options reduce surface staining and upkeep.
- **System Warranty Available:** Confidence in performance when installed by Licata-approved applicators.



Steel Frame Render System

SUBSTRATE

A1 Fibre Cement Board



Universal pigmented primer undercoat for interiors and exteriors.

BASE COAT

Raso Top 800



Fibre-reinforced skim coat/adhesive, certified for licataTHERM ETA/EAD systems.

Fibreglass Mesh



Reinforced glass fibre mesh, alkali-resistant.

PRIMER & DECORATIVE COAT

Isolante LG Primer



Ready-to-use universal acrylic pigmentable primer with high coverage.

Lerici Top Coat



Decorative acrylic paste coating, water-repellent and mould-resistant

OR

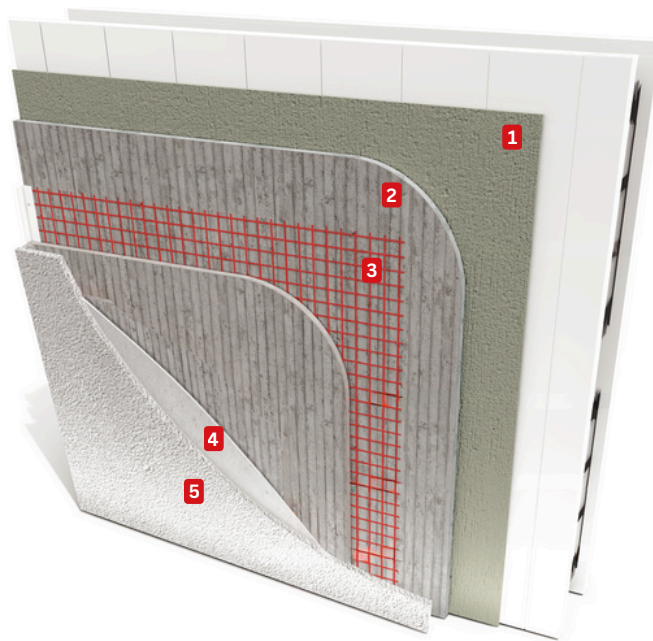
Siloxan Top Coat



Waterproof, transpiring and mould-resistant acryl-siloxane silicone paste coating.

ICF Render System

The Licata ICF Render System is specially formulated for use on Insulated Concrete Formwork (ICF) substrates, providing a durable and breathable render finish that complements the thermal efficiency of ICF construction. The system includes a high-adhesion basecoat with mesh reinforcement, a primer, and a breathable silicone or mineral topcoat. Designed to accommodate substrate movement and protect against weather, it delivers a crack-resistant, low-maintenance finish with excellent water repellency and long-term performance—perfect for both residential and commercial ICF builds.



- 1** Substrate Preparation
- 2** Base Coat
- 3** Fibreglass Mesh
- 4** Top Coat Primer
- 5** Top Coat Finish

Key Features

- **High-Adhesion Basecoat:** Specially formulated to bond to EPS-based ICF substrates.
- **Mesh Reinforcement:** Increases flexibility and resistance to surface cracking.
- **Breathable Silicone or Mineral Finishes:** Allows vapour to escape while resisting water ingress.
- **Lightweight System:** Ideal for maintaining the thermal performance of ICF walls.
- **Weather-Resistant:** Designed to withstand harsh external conditions.
- **Customisable Finish:** Available in a variety of colours and textures to suit modern design requirements.

Benefits

- **Perfect for ICF Construction:** Seamlessly integrates with ICF to maintain insulation and airtightness.
- **Crack-Resistant Surface:** Accommodates movement and reduces long-term maintenance.
- **Durable & Low Maintenance:** Self-cleaning properties with silicone finishes keep façades looking fresh.
- **Enhanced Thermal Performance:** Complements the energy efficiency of ICF by preventing thermal bridging.
- **Quick & Efficient Application:** Simplifies external finishing on ICF projects.
- **System Warranty Available:** Peace of mind when installed by Licata-approved contractors.



ICF Render System

SUBSTRATE PREPARATION

Rasp



Substrate must be rasped before application.

BASE COAT

Raso Top 800



Fibre-reinforced skim coat/adhesive, certified for licataTHERM ETA/EAD systems.

Fibreglass Mesh



Reinforced glass fibre mesh, alkali-resistant.

PRIMER & DECORATIVE COAT

Isolante LG Primer



Ready-to-use universal acrylic pigmentable primer with high coverage.

Lerici Top Coat



Decorative acrylic paste coating, water-repellent and mould-resistant

OR

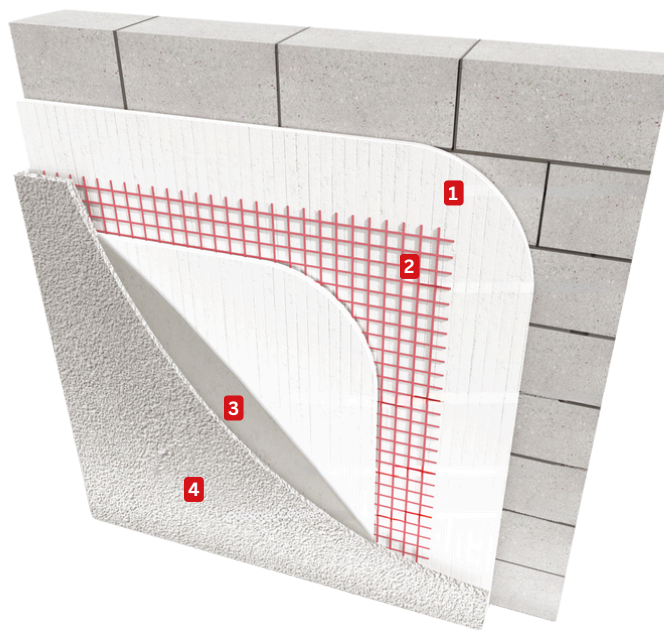
Siloxan Top Coat



Waterproof, transpiring and mould-resistant acryl-siloxane silicone paste coating.

Elastomeric Render System

The Licata Elastomeric Render System is a flexible, high-performance solution designed to accommodate large movement in the substrate. Featuring a mesh-reinforced basecoat, and a decorative finish, this system is ideal for refurbishments where significant movement or hairline cracking is a concern. It delivers a smooth, durable finish that resists weathering, movement, and impact—making it perfect for long-lasting protection and a flawless appearance on residential and commercial façades.



- 1** Base Coat
- 2** Fibreglass Mesh
- 3** Top Coat Primer
- 4** Top Coat Finish

Key Features

- **Mesh-Reinforced Basecoat:** Provides enhanced flexibility and strength to resist cracking.
- **Highly Flexible Formulation:** Absorbs minor building movements and prevents hairline cracks.
- **Breathable Topcoats:** Silicone or mineral finishes allow moisture to escape while repelling water.
- **Excellent Adhesion:** Bonds securely to a wide range of substrates.
- **UV & Weather Resistant:** Durable in all climates, protecting against fading, rain, and frost.
- **Wide Range of Finishes:** Available in smooth or textured effects, with various colour options.

Benefits

- **Crack Prevention:** Maintains a clean, seamless appearance by reducing surface cracking over time.
- **Ideal for Refurbishments:** Especially useful for buildings with previous cracking or surface imperfections.
- **Long-Term Durability:** Resistant to environmental wear, impact, and weather conditions.
- **Low Maintenance:** Silicone finishes offer self-cleaning properties, reducing upkeep.
- **Improved Aesthetic Appeal:** Delivers a uniform, professional look across entire façades.
- **System Warranty Available:** Assured performance when applied by Licata-approved contractors.





Elastomeric Render System

PRIMER

Aggrapante Substrate Primer



Ready-to-use primer with high adhesion on smooth or absorbent substrates.

BASE COAT

RasoTH 500 Plus



Glueing/skim coating with very high resistance, elasticity and adhesive strength.

Fibreglass Mesh



Reinforced glass fibre mesh, alkali-resistant.

PRIMER & DECORATIVE COAT

Siloxan Primer



Siloxane primer for wall coverings, high power transpiring and consolidating.

Siloxan Top Coat

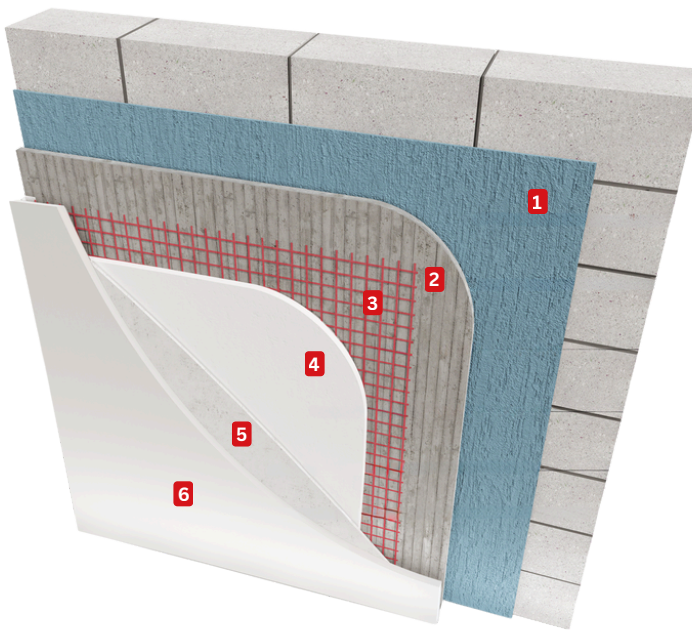


Waterproof, transpiring and mould-resistant acryl-siloxane paste coating.



Plaster Render System

The Licata Plaster Render System is a breathable, high-performance external render solution designed to achieve a smooth, traditional plastered finish on exterior façades. Suitable for application onto blockwork, brick, or cement-based substrates, the system includes a mesh-reinforced basecoat, primer, and a fine-grain topcoat. It offers excellent crack resistance, water repellency, and long-term durability—perfect for projects aiming for a clean, elegant appearance with modern performance.



- 1 Substrate Primer
- 2 Base Coat
- 3 Fibreglass Mesh
- 4 Plaster
- 3 Primer
- 4 Paint

Key Features

- **Smooth Exterior Finish:** Delivers a traditional plastered look with a refined, contemporary edge.
- **Mesh-Reinforced Basecoat:** Adds strength and flexibility, reducing the risk of cracking.
- **Breathable and Water-Repellent:** Allows moisture vapour to escape while keeping rain out.
- **Strong Adhesion:** Designed to bond to a wide range of exterior substrates.
- **UV & Weather Resistant:** Protects against fading, rain, and harsh environmental conditions.
- **Fine Grain Texture:** Ideal for clients seeking a minimal, clean external façade.

Benefits

- **Elegant, Modern Look:** Achieves a sleek, smooth finish ideal for high-spec architectural designs.
- **Durable and Long-Lasting:** Withstands weathering and impact over time.
- **Low Maintenance:** Silicone topcoat options reduce staining and surface buildup.
- **Versatile Application:** Suitable for both new builds and refurbishments.
- **Time-Efficient:** Simple application process reduces labour time and site disruption.
- **System Warranty Available:** Backed when installed by Licata-approved applicators.



Plaster Render System

PRIMER

Aggrapante Substrate Primer



Ready-to-use primer with high adhesion on smooth or absorbent substrates.

BASE COAT

Raso W 160



Fibre-reinforced skim coat/adhesive for exterior insulation systems.

Fibreglass Mesh



Reinforced glass fibre mesh, alkali-resistant.

PLASTER

Artica



Stabilising mortar with an ultra-smooth finish and very high adhesion.

PRIMER

Siloxan Primer



Siloxane primer for wall coverings, high power transpiring and consolidating.

PAINT

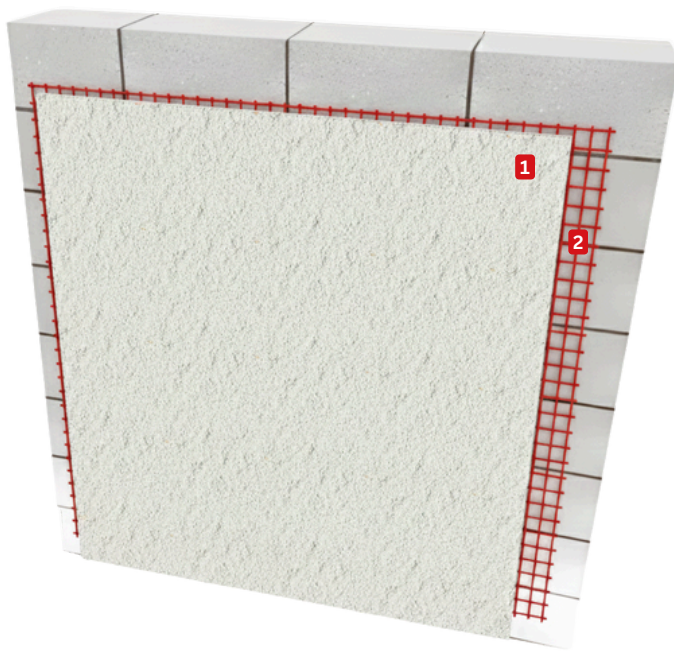
Siloxan Paint



Transpiring and waterproof acryl-siloxane micro-coating.

One-Coat Monocouche System

The Licata One-Coat Monocouche System is a premium through-coloured render solution ideal for fast-track applications on new build or refurbishment projects. Applied in a single coat, it simplifies installation while providing a durable, weather-resistant finish with excellent breathability. The system is reinforced with high-quality additives for enhanced adhesion, crack resistance, and long-term performance. Suitable for various masonry substrates, it offers a natural, textured appearance and is available in a wide range of colours. The Licata One-Coat Monocouche System combines aesthetic appeal with robust protection, making it a practical choice for both residential and commercial facades.



- 1** Monocouche Render
- 2** Fibreglass Mesh

Key Features

- **Through-coloured render** – Colour is mixed into the render for a consistent finish.
- **Single-coat application** – Applied in one pass, reducing installation time and labour.
- **Suitable for machine or hand application** – Offers flexibility on-site.
- **High water resistance** – Protects against rain and damp ingress.
- **Breathable formulation** – Allows moisture vapour to escape from the substrate.
- **Crack-resistant composition** – Enhanced with fibres and additives for durability.

Benefits

- **Faster project turnaround** – Single-coat system reduces time on site and speeds up completion.
- **Lower labour costs** – Less time and effort required compared to multi-coat systems.
- **Long-lasting colour** – No need for painting, reducing long-term maintenance.
- **Enhanced weather protection** – Safeguards buildings from the elements.
- **Improved internal comfort** – Breathability helps regulate moisture and prevent damp issues.
- **Versatile design options** – Broad colour palette and textured finishes to suit any architectural style.



One-Coat Monocouche System

FINISH COAT

LBS Monoscratch 300



Lightweight one-coat monocouche render.

MESH

Fibreglass Mesh



Reinforced glass fibre mesh, alkali-resistant.

Can be applied in areas of concentrated stress

OPTIONAL EXTRAS

Hidro Rep



Waterproof silane agent with low environmental impact.

Vitrea Quarzo (acrylic paint)

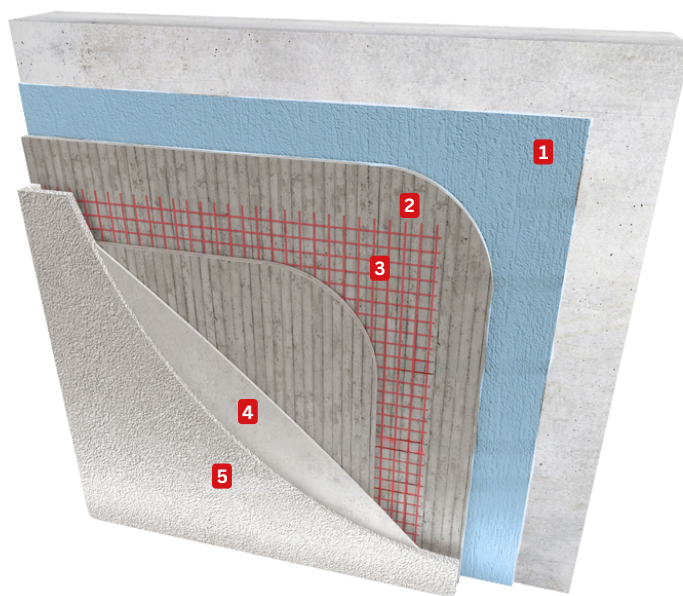


Waterproof, anti-mould and anti-algae quartz micro-coating.

OR

Concrete Render System

The Licata Concrete Substrate Render System is a robust, high-performance solution specifically developed for direct application onto concrete surfaces. It includes a primer for enhanced adhesion, a mesh-reinforced basecoat for added flexibility, and a breathable silicone or mineral topcoat for long-lasting protection. This system is ideal for both new and existing concrete structures, offering excellent crack resistance, weather durability, and a clean, modern finish. Whether used on commercial, residential, or infrastructure projects, it ensures a strong bond and a refined appearance without compromising performance.



- 1** Substrate Primer
- 2** Base Coat
- 3** Fibreglass Mesh
- 4** Top Coat Primer
- 5** Top Coat Finish

Key Features

- **High-Adhesion Primer:** Specifically formulated to bond securely to dense concrete surfaces.
- **Mesh-Reinforced Basecoat:** Enhances flexibility and reduces the risk of cracking.
- **Breathable Topcoat:** Silicone or mineral finish allows moisture vapour to escape.
- **Weather & UV Resistant:** Protects against rain, frost, and sunlight degradation.
- **Strong Impact Resistance:** Designed to withstand environmental stress and physical impact.
- **Smooth or Textured Finishes Available:** Design flexibility to suit modern and traditional aesthetics.

Benefits

- **Direct-to-Concrete Application:** No need for additional cladding or boarding systems.
- **Low Maintenance:** Silicone finishes offer self-cleaning properties, reducing ongoing upkeep.
- **Improved Aesthetic Appeal:** Transforms plain concrete into a sleek, uniform façade.
- **Versatile Use:** Suitable for residential, commercial, and industrial buildings.
- **System Warranty Available:** Assured quality and peace of mind when installed by Licata-approved contractors.



Concrete Render System

PRIMER

Aggrapante Substrate Primer



Ready-to-use primer with high adhesion on smooth or absorbent substrates.

BASE COAT

Raso R 140



Fibre-reinforced skim coat for rough plasters and insulating panels.

Raso W160



Fibre-reinforced skim coat/adhesive for exterior insulation systems.

Fibreglass Mesh



Reinforced glass fibre mesh, alkali-resistant.

OR

PRIMER & DECORATIVE COAT

Isolante LG Primer



Ready-to-use universal acrylic pigmentable primer with high coverage.

Lerici Top Coat



Decorative acrylic paste coating, water-repellent and mould-resistant

Siloxan Top Coat

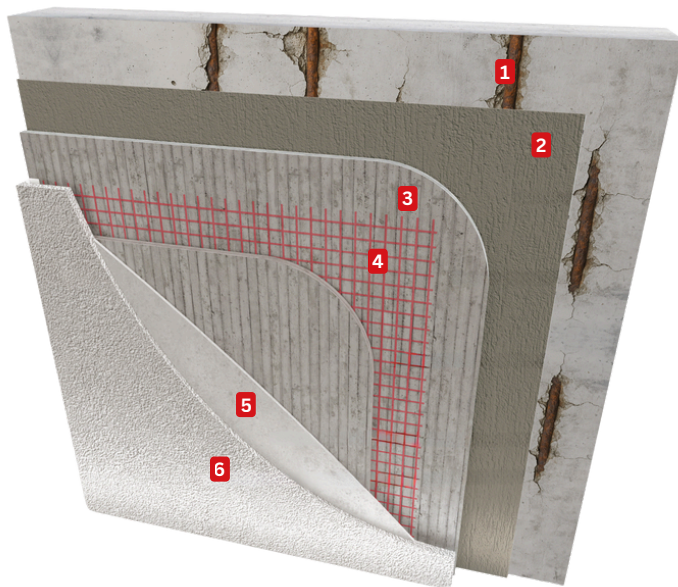


Waterproof, transpiring and mould-resistant acryl-siloxane silicone paste coating.

OR

Concrete Repair Render System

The Licata Concrete Repair Render System is a high-performance solution designed for restoring damaged or deteriorated concrete surfaces. Ideal for structural repairs, this system includes a corrosion-inhibiting primer, fibre-reinforced repair mortar, and a breathable finishing render. It effectively repairs cracks, spalling, and exposed reinforcement, restoring both the strength and appearance of the concrete. Suitable for internal and external use, the system offers excellent adhesion, flexibility, and long-term durability—perfect for extending the life of concrete structures while protecting them from further damage.



- 1** Iron Bars Protection
- 2** Concrete Repair Mortar
- 3** Base Coat
- 4** Fibreglass Mesh
- 5** Top Coat Primer
- 6** Top Coat Finish

Key Features

- **Corrosion-Inhibiting Primer:** Protects exposed steel reinforcement from further rust and degradation.
- **Fibre-Reinforced Repair Mortar:** Provides high strength and flexibility for structural repairs.
- **Excellent Adhesion:** Bonds securely to concrete, render, and steel reinforcement.
- **Breathable Finishes:** Allows vapour to escape while shielding against water ingress.
- **Shrinkage-Controlled Formulation:** Minimises cracking and ensures long-lasting results.
- **Compatible Topcoat Options:** Can be finished with Licata mineral or silicone renders for added protection and aesthetics.

Benefits

- **Restores Structural Integrity:** Repairs spalling, cracks, and exposed rebar to restore concrete strength.
- **Prevents Further Damage:** Seals and protects the substrate against weathering and corrosion.
- **Cost-Effective Maintenance:** Extends the lifespan of concrete structures without full replacement.
- **Fast & Easy Application:** User-friendly products speed up repair times and reduce labour costs.
- **Versatile Use:** Suitable for façades, soffits, columns, and other vertical or overhead concrete elements.
- **System Warranty Available:** Guaranteed performance when installed by Licata-approved applicators.





Concrete Repair Render System

IRON PROTECTION

BetonFIP Passivante



Green, polymer-modified, single-component, cementitious passivating agent for the passivation of reinforcements in concrete structures.

CONCRETE REPAIR

Repair 250 N



Structural cement mortar for restoration, protection and skim coating of concrete.

BASE COAT

Raso R 140



Fibre-reinforced skim coat for rough plasters and insulating panels.

Raso W160



Fibre-reinforced skim coat/adhesive for exterior insulation systems.

Fibreglass Mesh



Reinforced glass fibre mesh, alkali-resistant.

OR

PRIMER & DECORATIVE COAT

Isolante LG Primer



Ready-to-use universal acrylic pigmentable primer with high coverage.

Lerici Top Coat



Decorative acrylic paste coating, water-repellent and mould-resistant

Siloxan Top Coat



Waterproof, transpiring and mould-resistant acryl-siloxane silicone paste coating.

OR



Top Coat Colour Range

Discover Licata's wide range of colours for Silicone and Acrylic Renders, designed for long-lasting vibrancy, UV resistance, and a flawless finish on any façade.

Contact our sales team for our full exterior colour collection.

Colour samples in this fan deck are provided for reference only, as they are conceived for graphic purpose. In order to assess the actual shades of the chosen colour, please request us a sample. Always check the material prior to the application to ensure that the shade of colour matches your requests. **Any complaints regarding the shades of colour will not be accepted after the application.**

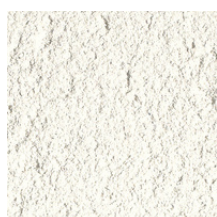
					
Chalk	Starlight	Gardenia	Cotton	Feather	Bone
					
Mist	Frost	Cloud	Whisper	Vanilla	Champagne
					
Rice Paper	Linen	Lace	Cosmic	Silk	Buttermilk
					
Marigold	Sand	Rain	Ice	Olive	Eucalyptus
					
Pink Lemonade	Salmon	Earth	Stone	Ash	Titanium



Monocouche Colour Range

Explore Licata's Monocouche Colour Range, offering a selection of natural, pre-mixed shades for a clean, durable finish. Designed for through-colour application, our monocouche renders provide long-lasting colour and low maintenance with no need for painting.

Colour samples in this fan deck are provided for reference only, as they are conceived for graphic purpose. In order to assess the actual shades of the chosen colour, please request us a sample. Always check the material prior to the application to ensure that the shade of colour matches your requests. **Any complaints regarding the shades of colour will not be accepted after the application.**



San Torini



Oslo



Anderlecht



Monaco



Roma



Sarajevo



Istanbul



Faro



Lisboa



Belfast



Kiev



Copenhagen



Wien



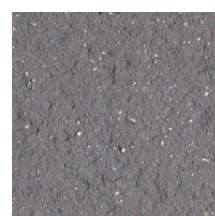
Liège



Bologna



Valence



Venise



Maastricht



Moscou



Liverpool



Porto



Amsterdam



Pise

Monoscratch 300

Lightweight one-coat monocouche render



Main Areas of Application

LBS Monoscratch can be applied manually or sprayed mechanically on all substrates where traditional hydraulic coatings can be used, mainly:

- Brickwork or lightweight blockwork
- Concrete
- Mineral substrates
- Cementitious basecoat renders.

LBS Monoscratch can be used for renovation or on new buildings.

LBS Monoscratch coatings can be applied directly to the substrate, using the monocouche technique.

Characteristics

LBS Monoscratch is a coloured one-coat monocouche render. It is a ready to mix, water repelling facade finish.

LBS Monoscratch is available in 48 colours (see colour chart). Other colours are available on demand.

Technical Data

Grain size	0 - 2 mm
Density	± 1340 kg/m ³
Module elasticity	± 4800 MPa
Flexural strength	≥ 2,0 MPa
Adhesion strength after cycles	≥ 0,2 MPa
Water retention	± 95 %
Water absorption class	W2
Water permeability	< 1ml/cm ²
Water vapor permeability μ	≤ 35
Reaction to fire	A1



Silicone Render

Ready to use coating made with a siloxane binder paste affording high waterrepellency and excellent permeability to water vapour, certified in accordance with ETICS standards.

Offering excellent mould-proof and anti-algae properties, it is an ideal decoration during styling/functional restoration work on façades and specifically in licatatherm external solid insulation systems. Ideal as a decorative finish in all work requiring high permeability to water vapour.



Licata Silicone Render is a coating made with water-dispersed siloxane binder paste, ready for use and which can be pigmented. Silicone Render is specifically designed for work on new or existing façades, as well as for the decorative phase of reinforced skim coating, and in licatatherm external solid insulation. Owing to its formula, Silicone Render provides complete protection for the façade against rain and atmospheric agents. The special additives contained in the formula guarantees outstanding protection against algal and mould growth. Ideal as a finish where a high degree of permeability to water vapour is required, such as in damp-proofing work or breathable insulation systems. Combined with colouring pastes, Silicone Render guarantees good durability, gloss and full colours. Available in 5 particle size



Main Areas of Application

Licata Silicone Render is recommended for decorating external surfaces, whether new or existing, on residential industrial or commercial buildings. It is advisable to use the product on seasoned substrates, in other words generally after a curing time of four weeks. It is applicable to substrates such as:

- **licatatherm** thermal insulation systems
- Damp-proofing renders
- Thermal renders
- Lime or lime/cement based renders
- Reinforced skim coating in façade restoration work
- Concrete
- Prefabricated concrete panels

For application on other types of substrates, please contact our engineering department.

Characteristics

- **High water-repellency:** the carefully selected latest-generation additives give the coating self-cleaning properties.
- **Workability:** the thixotropy of the coating combines excellent spreadability of the coating with good adhesion to the substrate to minimise any material peeling during processing
- **Excellent permeability to water vapour:** the carefully selected siloxane binders maximises the coating's properties ensuring the walls breathe without creating a "barrier effect"
- **Improved pot life:** Silicone Render, in standard conditions, makes for easier work on large-size façades thanks to an improvement made to the extended working time.
- **Algal and mould protection:** the special mould-proof additives found in the formula guarantee an excellent degree of protection against algal and mould growth.

Acrylic Top Coat

Decorative acrylic coating with a compact and soft texture, water-repellent and mould-resistant, compatible with the ETICS licataTHERM.



Main Areas of Application

It is particularly suitable to:

Decorate coat systems, especially in combination with non-transpiring panels such as EPS and graphite EPS.

It is distinguished by its soft and uniform finish.

Recommended applications:

Covering and decoration of façades of all kinds (plasters, skim coats, etc.) with a waterproof finish. Resistant to mould attack and weathering, it is ideal both indoor and outdoor.

Suitable substrates (indoors or outdoors):

- Thermal insulation systems licataTHERM
- Thermal renders
- Lime, cement or lime/cement base plasters
- Reinforced skim coatings in façade restoration cycles
- Precast and cast-in-place concrete.

Characteristics

The homogeneous finish allows you to decorate the surfaces with a soft uniform effect.

Compactness reduces waste and improves workability.

The high adhesion strength makes it compatible with all common substrates used in construction.

Conforms to UNI EN 15824 as a decorative polymer paste.

Wide choice of colours: compatible with the licata exterior colour collection.

Silsan Paint

Acrylic-siloxane microcoating for exteriors, based on copolymers in aqueous dispersion, with low water absorption and good vapour permeability. Resistant to alkaline substrates and atmospheric agents, it combines excellent anti-mold properties and high resistance to washing. It is ideal as a decoration in aesthetic/functional restoration cycles of facades.



Silsan Paint is a microcoating, based on acrylic-siloxane copolymers in aqueous dispersion and siliceous inerts, pigmentable. The low dirt pick-up of the paint makes it specific for interventions on new or existing facades both as a micro-coating for the sole repainting of facades, and as a decorative phase in reinforced smoothing cycles. Thanks to its formulation, Silsan Paint combines low water absorption with good permeability to water vapour; it allows complete protection of the facade from rain and atmospheric agents. The special additives contained in the formula guarantee excellent protection against attack by mould and algae. In combination with colour pastes, Silsan Paint ensures good durability, brilliance and fullness of the colours.



Main Areas of Application

Silsan Paint is suitable for decorating internal and external surfaces, new or existing, on residential, industrial or commercial buildings. It is advisable to use the product on seasoned surfaces, i.e. after a maturation time of at least four weeks. It can be applied on surfaces such as:

- Hydraulic lime-based finishes
- Aerial lime-based finishes
- Lime/cement-based finishes
- Capillary rising damp dehumidification systems
- Reinforced skimming systems in facade restoration cycles
- Concrete
- Prefabricated concrete panels
- Old paints as long as they are cohesive and consistent.

For application on different surfaces, please contact the technical office

Characteristics

- **Low dirt pick-up:** Silsan Paint is ideal as a final decoration of facades even in critical contexts with a high concentration of dust or pollutants thanks to a low dirt pick-up value
- **Good vapour permeability:** thanks to the careful selection of siloxane binders, Silsan Paint has good permeability to water vapour which makes it ideal for those looking for the right compromise between water repellency and breathability
- **High water repellency:** the particular formulation of Silsan Paint allows complete protection from atmospheric agents creating a continuous skin that prevents the passage of rainwater, thus keeping the walls dry.
- **Versatility:** the fineness of the grain size combined with careful research and selection of raw materials allow the professional to work Silsan Paint both manually (brush/roller) and mechanically (airless).

Vitrea Quarzo Acrylic Paint

Quartz micro-coating for exteriors based on acrylic copolymers in water dispersion, with high water resistance and exceptional workability. With excellent anti-mould and anti-algae properties, it is ideal for decorative finishes in aesthetic/functional restoration cycles of façades.



Vitrea Quarzo is a decorative pigmentable quartz micro-coating, based on acrylic copolymers in water dispersion, and silica inert fillers. Vitrea Quarzo is specific for both new and existing façades and as well as micro-coating for repainting of façades and as a decorative finish in reinforced skim coatings. Thanks to its formula, Vitrea Quarzo offers complete protection of façades against rain and atmospheric agents. Especially effective in extreme climate and environmental conditions (damp climate or smog). The special additive in the formula guarantees excellent protection against attacks by mould and algae. When combined with coloured pastes, Vitrea Quarzo ensure excellent durability, brightness and full colour.



Main Areas of Application

Vitrea Quarzo is suitable for decorative finishes of substrates in internal/external areas, both new or existing, on residential, industrial or commercial buildings it is recommended for use on cured substrates, i.e. after a curing time of at least four weeks. It can be applied to substrates, such as:

- Lime or lime/cement-based finishes
- Reinforced skim coatings in façade restoration cycles
- Concrete
- Pre-fabricated concrete panels
- Old paintwork provided that it is intact and consistent.

For applications on different substrates, please contact our technical department.

Characteristics

- Low dirt pick-up: **Vitrea Quarzo** is also ideal as a final decorative finish for façades in places subject to high concentrations of dust or pollutants, thanks to its low dirt pick-up.
- High water resistance: the special formulation of **Vitrea Quarzo** provides complete protection from atmospheric agents creating an unbroken skin that prevents penetration by rainwater, thus keeping walls dry.
- Versatility: the fine grain size combined with meticulous research and selection of raw materials means professionals can apply **Vitrea Quarzo** both manually (brush/roller), and mechanically (airless).
- Protection against mould and algae: the special anti-mould additives in the formula ensure an excellent degree of protection from mould and algae formation.
- Wide choice of colours: from pastel shades to ultra-bright colours, **Vitrea Quarzo** can be coloured with over 600 different colour shades.

Siloxan Paint

Transpiring and waterproof acryl-siloxane micro-coating, with excellent anti-mould properties and high resistance to washing.



Main Areas of Application

It is particularly suitable to:

Paint surfaces that require a finish with high transpiring feature coupled with waterproofing, especially in combination with siloxane materials and transpiring panels (rock wool, cork, etc.).

Recommended applications:

Painting surfaces of all kinds: Commercial and residential buildings, showrooms, homes, etc. Suitable substrates (indoor and outdoor):

- Lime, cement or lime/cement-based plasters
- Reinforced skim coats
- Dehumidification cycles
- Transpiring systems
- Precast and cast-in-place concrete
- Old paints as long as they are properly pre-treated

Characteristics

Water-repellent and transpiring thanks to the perfect dosage of siloxanes in organic polymer.

Versatile: reduce waste and laying times.

The high adhesion force applicable both manually (brush/roller) and mechanically (airless).

Anti-algae and anti-mould thanks to the addition of phytotrophic suppressants

Wide choice of colours compatible with the licatacolore2.0 folder.

Aggrappante LG Substrate Primer

Pigmented primer based on acrylic resins and natural silica inert fillers, ideal for Exteriors, with high bonding power on smooth or absorbent substrates

Universal pigmented primer based on acrylic resins and natural silica inert fillers. Specifically for bridging primer on smooth surfaces for rendering or skim coating cycles. The presence of inert fillers allows Aggrappante LG to create rough surfaces for excellent grip, allowing rendering and/or skim coatings to bond perfectly to cement or lime/cement. Ideal on absorbent substrates as well because it uniformes the drying of successive layers.



Main Areas of Application

Aggrappante LG is suitable for preparing substrates in internal/external areas, both new or existing, on residential, industrial or commercial buildings. It is recommended for use on cured substrates, i.e. after a curing time of at least four weeks. It can be applied to substrates, such as:

- Smooth concrete
- Absorbent walls/substrates
- Particleboard (on pre-fabricated buildings)
- Plaster board

For applications on different substrates, please contact our technical department

Characteristics

Evens out absorption: ideal even on porous surfaces as it regulates the drying of subsequent materials (plaster, skim coating) avoiding “burn” cause by the substrate absorbing excessive amounts of water in the mixture.

- Excellent bonding power: ideal as bridging primer on horizontal or vertical vibrated/smooth concrete panels. Creates a rough surface which is ideal for bonding renders/skim coatings.
 - Universal: **Aggrappante LG** can be applied to the most commonly used substrates in building.
 - Low VOC content: extremely low release, compliant with European laws on volatile organic components
-



Isolante LG Top Coat Primer

Pigmentable primer made with acrylic copolymers and inert silica materials, specifically for exteriors, with high coverage and excellent levelling properties.



Universal pigmentable primer made with acrylic copolymers and inert silica materials. It is ideal as a fixer before all decoration work with micro-coatings or synthetic binder based paste coatings. Specifically designed for exteriors and suitable for interiors, its formula is purpose-designed to achieve high levels of concealment for both flaws in the substrate, as well as when painting over medium/strong colours. Its high levelling power ensures even absorption of the subsequent decorative layer, enhancing the yield and the surface effect of the micro-coating.



Main Areas of Application

Isolante LG is recommended for preparing internal/external substrates, whether new or existing, on residential, industrial or commercial buildings. It is advisable to use the product on seasoned substrates, in other words after a curing time of at least four weeks. It is applicable to substrates such as:

- Smooth concrete
- Absorbent walls/substrates
- Existing rendered façades
- Prefabricated concrete panels
- Old paint and coatings of an organic or mineral nature
- Plasterboard sheets

For application on other types of substrates, please contact our engineering department.

Characteristics

- **Pigmentable:** it can be applied white or coloured, pigmented with the same shade as the subsequent topcoat, so as to combine the effect of the bonding bridge and attenuate any strong shades when painting over existing surfaces.
- **Universal:** **Isolante LG** can be applied to the majority of substrates commonly used in construction.
- **Low VOC content:** extremely low emissions, in compliance with European standards concerning volatile organic compounds.
- **Excellent levelling power:** also ideal on new surfaces since it limits the absorption of subsequent coats of paint, maximising yield and improving the styling finish.

Siloxan Primer

Siloxane primer for wall coverings, high power transpiring and consolidating.



Main Areas of Application

It is particularly suitable to:

Prepare walls and ceilings before laying Siloxan Color and Siloxan Paint and siloxane materials in general.

Recommended applications:

Consolidate and improve the adhesion of vertical and horizontal surfaces, even very absorbent or crumbling, before laying decorative coatings. Suitable substrates (indoor and outdoor):

- Dehumidifying cycles
- External thermal insulation composite systems
- Lime, cement or lime/cement-based plasters
- Reinforced skim coats
- Precast and cast-in-place concrete
- Old paint or coatings
- Gypsum and plasterboard

Characteristics

High binding power ensured by the latest generation of acrylic polymers.

Also suitable for indoor works thanks to the low content of volatile compounds.

Excellent penetration limits the excessive absorption of porous surfaces.

Universally compatible with the most common substrates used in construction.



Licacem 200

Plaster mortar with controlled hygrometric shrinkage.



Main Areas of Application

It is particularly suitable to:

Stabilising plastering of walls.

Recommended applications:

Plastering vertical surfaces made of the most common building materials.

- Brick walls
- Clay brick
- Concrete blocks
- Precast or cast-in-place concrete

Characteristics

Its versatility of application allows it to be used on all kinds of surfaces.

Its smoothness and consistency allow for easy and comfortable application.

Its controlled hygrometric shrinkage formulation minimises cracks and fissures.

Its high gripping power allows it to adhere to most common building materials.

Compliant with Standard **UNI EN 998-1** as a GP mortar.

Licacem Fibro

High performance, fibre-reinforced plaster mortar.



Main Areas of Application

It is particularly suitable to:

Semi-structural and stabilising plastering.

Recommended applications:

Plastering vertical surfaces made of the most common building materials.

Suitable substrates (indoors or outdoors):

- Brick walls
- Clay brick
- Concrete blocks
- Precast or cast-in-place concrete

Characteristics

Its versatility of application allows it to be used on all kinds of surfaces.

Its high mechanical strength makes it ideal even for semi-structural reinforcements.

Its smoothness and consistency allow for easy and comfortable application.

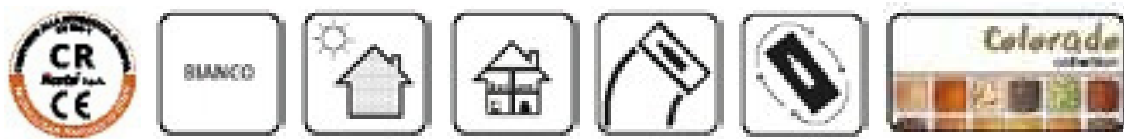
Its fibre-reinforced, controlled-shrinkage formulation minimises cracks and fissures.

Its high gripping power allows it to adhere to most common building materials.

Compliant with Standard **UNI EN 998-1** as a GP mortar.

Colorado Spugnato

Decorative plaster (CR), environmentally friendly and transpiring, based on nHL5 lime.



Main Areas of Application

It is particularly suitable to:

Plaster masonry before laying other products of the Naturalis line in environmentally friendly cycles. Suitable for creating transpiring masonry, even in areas subject to frequent rainfall.

Recommended applications:

Plaster any kind of surface that requires a water-resistant and transpiring decorative finish, with the pleasantly wavy appearance of the hydrated lime left white or pigmented.

Suitable substrates (indoors or outdoors):

- Plaster-based aerial lime
- Hydraulic lime base plasters
- Lime/cement-based plasters

Characteristics

Smooth and soft: it allows easy application, both precision and deliberately rustic.

The high transpiration feature makes it ideal as a final layer of dehumidifying cycles.

Excellent dimensional stability and slow lime integration prevent cracks and fissures.

Historically compatible thanks to the use of traditional raw materials such as NHL 5 hydraulic lime.

Conforms to the **GP class** of the **UNI EN 998-1** standard as decorative plaster.

Raso W 160

Fibre-reinforced skim coat/adhesive for interiors and exteriors, made with hydraulic binders, polymer-modified resins, certified in accordance with the UNI 998-1 standard as GP mortar, specifically designed for external solid insulation systems with white or graphite EPS panels and as a skim coat, in the reinforced repair of façades during restoration work.



Raso W 160 is a professional-grade skim coat/adhesive for interiors and exteriors, made with Portland cement, carefully selected sands, polymer-modified resins and additives that give it a considerable adhesive capacity and good workability. The addition of special mineral fibres means it is possible to combine improved shock resistance with good flexibility. Raso W 160 proves to be an ideal substrate for subsequent application of decorative coatings made with silicates, acrylics, siloxanes, or paintwork. The superior adhesive capacity, the enhanced pot life and the exceptional spreadability make it particularly recommended for licatatherm external solid insulation systems and as a skim coating, in the reinforced repair of façades during restoration work.



Main Areas of Application

Raso W 160 can be used on the majority of substrates commonly used in construction, for work on both new and existing buildings. It is mainly intended for use in:

- licatatherm external solid insulation systems with classic panels such as EPS, graphite EPS or XPS (only for low bottom board strips)
- Lime/cement based renders
- Brick
- Prefabricated concrete or cast in-situ
- Autoclaved aerated concrete
- Old paintwork and coatings provided they are clean, consistent and well anchored to the substrate

Owing to its outstanding permeability to water vapour, Raso W 160 is also recommended for licatatherm external solid insulation with rock wool or glass wool panels. It is also suitable for single or double layer skim coatings with reinforcement on renders or lime-based finishes where no damp-proofing treatment or the use of biocompatible materials is required.

For application on other types of substrates, please contact our engineering department.

Characteristics

- Universal product: owing to its special composition, **Raso W 160** adheres to the majority of substrates commonly used in construction.
- Easy workability. The combined spreadability, easy detachment of tools and simple working are obtained thanks to the use of latest-generation additives, reducing the level of difficulty and any delays in the laying process.
- Regulating: **Raso W 160** can also be used as a "regulating" product on extra thick surfaces that are not flat (up to 10 mm).
- Outstanding thixotropy: the special additives contained in **Raso W 160** make for easy application both vertically as well as over-head.
- Controlled hygrometric shrinkage. The presence of special mineral fibres minimises the formation of cracks

Raso R140

Fibre-reinforced skim coat for rough plasters and insulating panels.



Main Areas of Application

It is particularly suitable for:

Fine and medium-fine smoothing of insulating panels.

Recommended applications:

Smoothing of even medium thicknesses of the most common building materials.

Suitable substrates (indoors or outdoors):

- EPS, graphite EPS or XPS insulating panels (only for low plinth strips)
- Lime/cement-based plasters
- Clay brick
- Precast or cast-in-place concrete
- Autoclaved aerated concrete
- Old paint and coatings provided they are clean, thick and well anchored to the substrate

Characteristics

Its versatility of application allows it to be used on all kinds of surfaces.

Its high mechanical strength makes it ideal even for semi-structural reinforcements

Its smoothness and consistency allow for easy and comfortable application

Its fibre-reinforced, controlled-shrinkage formulation minimises cracks and fissures.

Its balanced grain size results in a compact and uniform fine-textured surface

Compliant with Standard **UNI EN 998-1** as a GP mortar.

Raso Top 800

Fibre-reinforced mineral adhesive/skim coating made with hydraulic binders and polymer-modified resins for interiors and exteriors. Specifically designed for ETAG 004 external solid insulation such as licatatherm and for façade restoration work.



Raso Top 800 is a fibre-reinforced mineral adhesive/skim coating made with hydraulic binders, polymer-modified resins, selected inert materials and latest-generation additives, specifically devised for bonding and skim coating thermal insulation panels in ETAG 004 systems such as licatatherm. Raso Top 800 boasts an excellent degree of adhesion on any traditional substrate, whether new or existing, even with extremely low absorption, making it also ideal for façade restoration work, both indoors and out. Its special formula allows professionals to apply it with extreme smoothness, achieving finishes with a superior degree of styling. Its dimensional stability, guaranteed by controlled hygrometric shrinkage, means it can be applied in variable thicknesses of between 1 and 10 mm per coat, consequently Raso Top 800 also proves ideal as a regulating skim coating to restore flatness on horizontal or vertical substrates.



Main Areas of Application

Raso Top 800 can be used on the majority of substrates commonly used in construction, for work on both new and existing buildings. It is mainly intended for use in:

- licatatherm external solid insulation systems with classic panels such as EPS, graphite EPS, rock wool or XPS (only for low bottom board strips)
- Lime based renders
- Lime/cement based renders
- Brick
- Prefabricated concrete or cast in-situ
- Autoclaved aerated concrete
- Old paintwork and coatings provided they are clean, consistent and well anchored to the substrate

Raso Top 800 is also used in licatatherm external solid insulation systems for bonding and skim coating of natural breathable panels such as wood fibre or cork. For application on other types of substrates, please contact our engineering department.

Characteristics

- High adhesion: owing to the addition of specific additives, Raso Top 800 boasts excellent adhesion to the majority of commonly used substrates.
- Regulating: Raso Top 800 can also be used as a "regulating" product on extra thick surfaces that are not flat (up to 10 mm).
- Easy workability. The combined spreadability, easy detachment of tools and simple working are obtained thanks to the use of latest-generation additives, reducing the level of difficulty and any delays in the laying process.
- ETA certified: product inserted in external solid insulation systems awarded an ETA certificate.





Raso TH 500 Plus

Ready-to-use, synthetic polymer-based fibre-reinforced adhesive/render paste, with high adhesive power and excellent elasticity, ideal as an adhesive/render paste for use in licatatherm-type external insulation finishing systems and as a render paste in the reinforced restoration of façades with microcavillations.



Rasotherm 500 Plus is a ready-to-use, synthetic polymer-based in water dispersion fibre-reinforced adhesive/render paste, ideal as an adhesive/render paste for insulating panels made of foamed polystyrene, glass wool, rock wool, cork and wood fibre panels, especially on deformable bases such as wood panels, fibre-cement panels etc. The careful selection of raw materials and the addition of selected synthetic polymers, give Rasotherm 500 Plus excellent elasticity, flexibility, mechanical resistance (classified cat. 2 according to EN 13498) and impermeability to water. Totally free of cement, Rasotherm 500 Plus, is also ideal as skim plaster for buildings subject to high accidental impact risk, for low-baseboard and in the restoration of façades with microcavillations or cracks.



Main Areas of Application

Rasotherm 500 Plus is ideal as an adhesive/render plaster on natural and not natural insulating panels such as:

- Rock wool
- Glass wool
- Wood fibre
- EPS

Rasotherm 500 Plus is designed and formulated for applications on:

- Wooden bases (even CLT type composite laminates)
- Pre-fabricated concrete panels
- Lime-cement base plasters and finishes
- Reinforced skim coatings in façade restoration cycles
- Concrete
- Old paint and coatings provided they are clean, thick and well anchored to the substrate

For applications on different substrates, please contact our technical department.

Characteristics

- **Specific for wooden bases:** Rasotherm 500 Plus is an adhesive/render plaster specific for gluing the majority of insulating panels on a multitude of bases, even deformable, like wooden walls (raw wood, glued laminated timber, CLT etc.)
- **Excellent elasticity:** the combination of specific performance additives and high quality binders gives Rasotherm 500 Plus excellent elasticity and flexibility.
- **High mechanical resistance:** classified in Cat. 2 according to EN 13498, Rasotherm 500 Plus has excellent qualities of resistance to accidental impacts that make it ideal for interventions on low-baseboards.
- **Excellent Thixotropy:** the special consistency of Rasotherm 500 Plus allows an easy application also in vertical.



Artica

Straightening levelling cement, high adhesive power for both indoor and outdoor use, based on white cement, selected pure aggregates of micronised marble powder and specific natural additives. Ideal both as a smoothing levelling before decorating with mineral and synthetic paints or coatings, and as a final decorative layer with mirror texture.



Artica is a cement straightening skim plaster for both indoor and outdoor use, based on white cement, pure selected marble micronised powder aggregates and specific natural additives. Ideal both as a smoothing levelling before decorating with mineral and synthetic paints or coatings, and as a final decorative layer with mirror texture. Formulated in the Research & Development laboratories Licata SpA, is perfectly stable to atmospheric moisture and water. It is characterized by easy workability, high adhesion power, excellent smoothness, together with high mechanical and superficial resistance. The dimensional stability, guaranteed by a hygrometer shrinkage close to zero, allows the application in thickness ranging between 0 and 3 mm in a single coat, reducing cracks to a minimum in all phases of the product life (application, plastic phase, curing). Licata SpA Research & Development has dedicated specific studies to the extended pot life (about 3 hours), an added value that allows to easily retouch the product during the application.



Main Areas of Application

Artica adheres without the aid of adhesion promoters on most substrates used in the construction industry such as:

- Painted and enamel surfaces
- Wall coverings even old provided that they adhere well to the substrate
- Ceramic tiles also porcelain or enamel (provide a mechanical abrasion or wash with caustic soda)
- Skim plasters and plasters with any degree of finish
- Concrete
- Autoclaved aerated concrete
- Brick and masonry in general
- Plasterboard
- Insulating panels such as EPS, XPS foamed polyurethane, cork, etc.

To apply to different substrates, please contact our technical department.

Characteristics

- High mechanical and superficial resistance: high performance hydraulic binders, selected aggregates with controlled grading curve, confer elevated mechanical and superficial resistance.
- Applicable from 0 to 3 mm: the dimensional stability, guaranteed by a hygrometer shrinkage close to zero, allows application in thickness ranging between 0 and 3 mm in a single coat.
- Good workability. The use of special additives and selected micronized marble powder aggregates, give excellent smoothness and ease of processing, reducing the difficulty of installation to a minimum.
- Long open time: Licata Research & Development has dedicated specific studies to the extended pot life (about 3 hours), an added value that allows to easily retouch the product during the application.

Fibreglass Mesh

Alkali resistant fibre glass mesh, meets the maximum safety requirements about crack-resistance and resistance to



Main Areas of Application

After installing the insulation boards and having left the adhesive dry, you can smooth and drown the reinforcing mesh with licata. finish or licata.coat smoothing products. Operate by metal spatula trowel.

Starting from the top to bottom, insert and drown the reinforcing alkali-resistant fibreglass mesh licatatherm mesh 160 overlapping at least 10 cm of mesh between one strip and the other. Areas subjected to mechanical stress can be better armed by using two layers of mesh.

When the operation is finished let it all dry for at least 2 days. Then proceed with the second coat of licata.finish or licata.coat smoothing products with steel trowel (not notched) so as to completely cover the reinforcing mesh.

N.B. At the edges, stretch the glass fiber mesh over the entire wall and at the openings (doors / windows), drowning it in the mortar. Run along the edge of the intrados with a sharp knife, cutting the reinforcement mesh with an angle of 45 °. At the outer corners of the intrados cut the reinforcement mesh thoroughly and precisely.

TECHNICAL DATA

Description	Value	Regulations
Mass per unit area	160,4 g/m ²	ETAG 004
Starch	Alkali resistance	-
Thread count		DIN 53853
- Warp	48.0 Fd(yarn)/10 cm	
- Weft	20.0 Fd(yarn)/10 cm	
Colour	Red	-
Tensile strength		ETAG 004
- Warp	2042,2 N/5 cm	
- Weft	2289,4 N/5 cm	
Ash content	84%	ETAG 004
Standard roll width	100,5 cm	DIN EN 1773
Standard roll legth	50 m	-
Packacking	50 m ² roll 1 pallet contains 33 rolls (1.650 m ²)	

Hidro Rep

Waterproof silicone impregnating agent in aqueous dispersion with low environmental impact.



Main Areas of Application

It is particularly suitable to:

Carry out the invisible waterproofing treatment by impregnation of masonry of historical interest.

Recommended applications:

Making waterproof any kind of mineral surface, at least partially absorbent, as long as it is not too alkaline.

Suitable substrates (indoors or outdoors)

- Plaster
- Exposed bricks
- Concrete
- Natural stone
- Tuff
- Sandstone
- Expanded cement
- Earthenware
- Mineral materials for thermal insulation
- Various kinds of cementitious substrates
- Final protection for exterior mineral paints (lime, silicates)

Characteristics

Water vapour permeable: waterproofs in depth while leaving transpiration feature unchanged.

Excellent consolidating power: ideal for the consolidation of weak or crumbling substrates.

Protection of treated substrates from attacks by micro-organisms, pollutants and atmospheric agents.

Invisible coating: does not alter the aesthetics and is perfectly stable to UV rays.





BetonFIP Passivante

Green, polymer-modified, single-component, cementitious passivating agent for the passivation of reinforcements in concrete structures.



Main Areas of Application

BetonFIP PASSIVANTE is used to passivate the reinforcements of concrete structures, eliminating the risk of corrosion phenomena, which are the most frequent cause of the deterioration of concrete structures.

BetonFIP PASSIVANTE is used to protect reinforcements with a low iron cover, thus increasing the service life of the structure.

Characteristics

Water vapour permeable: waterproofs in depth while leaving transpiration feature unchanged.

Excellent consolidating power: ideal for the consolidation of weak or crumbling substrates.

Protection of treated substrates from attacks by micro-organisms, pollutants and atmospheric agents.

Invisible coating: does not alter the aesthetics and is perfectly stable to UV rays.



Repair 250 N

Structural cement mortar for restoration, protection and skim coating of concrete.



Main Areas of Application

It is particularly suitable to:

Restore damaged or deteriorated structural concrete, even with exposed metal bars

Ideal in temperate climates.

Recommended applications:

Repair damaged balconies, face plates, corners, gutters, concrete edges. Interventions on cement structures in general.

- Suitable substrates (indoors or outdoors):
- Concrete
- Mortar
- Lime/cement-based plasters
- Clay brick

Characteristics

Easy application conferred by a balanced curve and highly technological cellulose.

High adhesion power that is guaranteed by polymer additives.

Excellent wetting power and thixotropy: easy application both vertically and overhead.

Free from cracks and detachment phenomena thanks to the fibres and innovative formulation.

Compact aesthetic finish: the smooth texture allows painting without further processing.

Conforms to standard **R2** of **UNI EN 1504-3** as restoration mortar.



Sample Service

Licata assists you in selecting the right system and surface by providing material samples tailored to your project.
To request a sample, please visit: licataltd.co.uk/order-samples/

Product Demonstrations

We offer product demonstrations that cover every component of an EWI system, showcasing the correct application methods for each system layer and the range of finish materials available for facade designs. These sessions also highlight technical application techniques, along with specialist sealing and detailing practices.
For available dates, please contact us at: info@licataltd.co.uk

Tender Specifications

Licata provides tender specifications to support you during the planning phase.
For more information, contact us at: info@licataltd.co.uk

Detailed Drawings

Our Licata technical consultants work closely with architects, planners, and applicators to develop bespoke detail drawings upon request as well as CAD drawings and BIM objects.
Get in touch at: info@licataltd.co.uk



Twickenham

Unit 6, Hampton Business Park
Bolney Way, Twickenham
TW13 6DB, United Kingdom

Tel: 020 8894 3372

Southgate

Unit 5 Brunswick Industrial Park
Southgate
N11 1JL, United Kingdom

Tel: 020 3987 0200

Dartford

Unit 4 Schooner Park
Schooner Court, Dartford
DA2 6NW, United Kingdom

Tel: 01322 927 600

Birmingham

Unit 17 Frankley Industrial Estate
Tay Road, Frankley
B45 0LD, Birmingham, United Kingdom

Tel: 0121 667 2412

Manchester

Unit 6C Stanley Green Trading Estate,
Cheadle Hulme
SK8 6RB

Tel: 0161 949 0035

Essex

Shades House
Hodgson Way, Wickford
SS11 8YD

Tel: 0126 839 5828