



Licata EcoPure & Lime Render Systems

NEW BUILD | REBUILD | RENOVATE

www.licataltd.co.uk



Eco-sustainable line for
green building and **restoration**





Contents

INTRODUCTION

Why Naturalis?	03
Sustainable historical redevelopment	04
Lime and sustainability	05
Why choose lime and which lime to choose?	06

PRODUCTS

Base plasters and binders	08
Storica Deumidificante	09
Romana Intonaco	10
Calce Idraulica Naturale NHL 5	11
Decoratives	14
Colorado Spugnato	15
Colorado Frattazzato	16
Romana Specular	17
Raso Top Bio	18

LIME SYSTEMS

Basic Lime System	21
Water-repellent Lime System	23
Interior Lime System	25
Lime System with Micro Coating	27
Dehumidifying Lime System	29
EcoPure EWI Lime System	31

Colorado Collection	37
---------------------	----



Eco-sustainable line for
green building and restoration

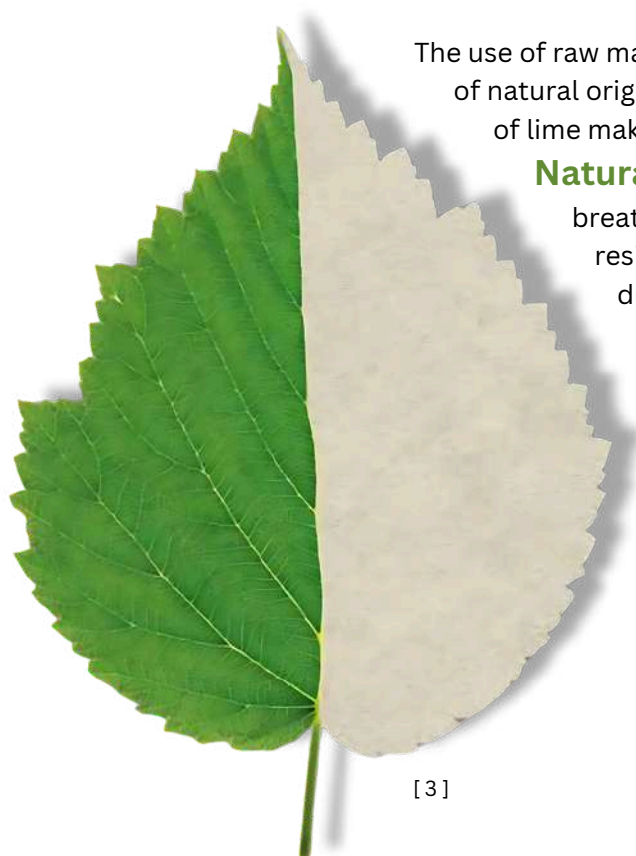
Why Naturalis?

A line that looks to the future,
with a selection of eco-
compatible products
and low environmental impact.

The Naturalis line favors components obtained through processes that are as eco-friendly as possible, among which lime, both hydrated and hydraulic, stands out. Using lime today means not only choosing quality and respecting history but also caring for the environment.

All the products listed in this brochure are 100% free from Portland cement, and the only solvent used is water. This system of eco-compatible products, relying solely on natural resources, allows for the construction and renovation of healthier buildings.

The Naturalis philosophy by Licata Spa meets the need for a living space in harmony with nature, where the building becomes an integral part of the environment thanks to the choice of ecological and breathable construction and finishing materials.



The use of raw materials entirely
of natural origin and the properties
of lime make the

Naturalis Calce Line

breathable,
resistant to even sea salt,
durable over time,
and perfectly capable of regulating
ambient humidity.

In recent times, the functional redevelopment of historic buildings compared to new constructions has become increasingly important.

All restoration work must be approached methodically, with the assurance of choosing the best solution through the right materials.

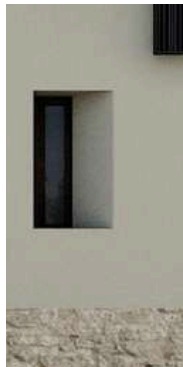
In this brochure, Licata S.p.A. presents products and components that restore buildings to their original appearance while ensuring comfortable living conditions for those who inhabit them.

The aim is a type of construction that redefines the concept of sustainability through the recovery and renovation of the existing architectural and artistic heritage.

The enhancement of buildings and binders is the result of many years of experience by our formulators, who have developed Naturaliscalce, a wide and comprehensive line designed to meet every need in building restoration.

Sustainable historical redevelopment

It is rooted in the past, offering materials suitable for all the needs of historical restoration.





Eco-sustainable line for
green building and restoration

Lime and sustainability

Lime is a natural raw material, a regulator of humidity, and has antibacterial properties. Its inherently high pH prevents the growth of algae, mould, and microorganisms in general.

The hygroscopic capacity of lime, together with its extremely high breathability, prevents moisture from accumulating in the air, ensuring dry and healthy environments.

The binders, sand, and stone used in our products are direct descendants of those used in ancient farmhouses, castles, and villas.

Natural additives improve performance and workability while respecting the rustic, time-worn aesthetics of historic buildings, maintaining their appearance unchanged and extending their lifespan.

Choosing Naturalis materials also helps protect the environment. For the same weight, producing 1 kg of cement requires up to 10 times more energy and polluting by-products than the same amount of lime.



What is called “lime” is a family of materials generally obtained from firing marl, a type of limestone rock.

Hydrated lime is a white, light, and soft powder with natural disinfectant properties thanks to its high pH. Mixed with water, it has been used in construction since ancient times both as a binder and as a finishing layer for walls and ceilings. Easy to color and decorate, once dry it becomes a highly breathable material but not completely waterproof.

Hydraulic lime is obtained from rocks containing particular impurities that improve its strength and give it a delicate beige color. Discovered during the Roman era, its strength and versatility made it the main binder in construction for many centuries, and today it reappears in ancient farmhouses and villas. Less basic but more resistant than hydrated lime, it is valued for being permeable to vapor while impermeable to water.

For our products, we use only completely natural limes, without synthetic additives.

All types of lime are highly resistant in coastal and marine environments, which otherwise negatively affect the durability of common Portland cement.

Why choose lime and which lime to choose?





Eco-sustainable line for
green building and restoration





Base plasters and binders

Storica Deumidificante
Romana Intonaco
Calce Idraulica Naturale NHL 5



Eco-sustainable line for
green building and restoration



Storica Deumidificante

Waterproof, transpiring and fibre-reinforced renovation plaster (R), based on natural hydraulic lime.

Main fields of application

It is particularly suitable to:

Plaster masonry before laying other products of the Naturalis line in environmentally friendly cycles. Suitable for creating transpiring masonry, even in areas subject to frequent rainfall and against damp masonry.

Recommended applications:

Plaster any kind of surface that requires a transpiring and water-resistant plastering, with the pleasantly rustic appearance of hydraulic lime.

- Suitable substrates (indoor and outdoor)
- Brickwork
- Stone
- Clay bricks
- Tuff
- Mixed masonry
- Reinforced Concrete
- Concrete

Characteristics

Historically compatible thanks to the use of traditional raw materials such as NHL 5 hydraulic lime.

The **extreme smoothness** allows easy and fast application, limiting waste of time and material.

The **transpiration and water repellency** feature makes it ideal as a plaster for renovation on damp masonry.

Excellent dimensional stability and slow lime integration prevent cracks and fissures.

The excellent **adhesion feature** makes it a suitable product for all common substrates, even in the presence of salts.

Conforms to **class R** of the **UNI EN 998-1** standard as renovation mortar.

Appearance



Applications



Quality



Traspirante



Eco-sustainable line for
green building and restoration



Romana Intonaco

Eco-friendly plaster for renovation (R), transpiring and fibre-reinforced, based on Roman lime.

Main fields of application

It is particularly suitable to:

Plaster masonry before laying other products of the Naturalis line in environmentally friendly cycles. Suitable for making transpiring masonry.

Recommended applications:

Plaster any kind of surface that requires a transpiring plastering, with the pleasantly rustic appearance of hydraulic lime.

- Suitable substrates (indoor and outdoor)
- Brickwork
- Stone
- Clay bricks
- Tuff
- Mixed masonry
- Reinforced Concrete
- Concrete

Characteristics

Historically compatible thanks to the use of traditional raw materials such as NHL 5 hydraulic lime

Smooth and soft: it allows easy application, both precision and deliberately rustic

The **high transpiration** feature makes it ideal as a porous plaster in dehumidifying cycles

Conforms to **class R** of the **UNI EN 998-1** standard as renovation mortar.

Appearance



Applications



Quality



Traspirante



Eco-sustainable line for
green building and restoration



Calce Idraulica Naturale NHL 5

Pure hydraulic NHL 5 reactive lime binder, resistant and environmentally friendly.

Main fields of application

It is particularly suitable to:

Create mortars and grouts to be used within eco-friendly renovation cycles or where its natural transpiration feature is required.

Recommended applications:

Prepare non-structural mortars of all kinds: for bedding, styling, plasters, grouts, etc.

- Suitable substrates (indoors or outdoors):
- Brick
- Stone
- Clay brick
- Tuff
- Mixed masonry
- Reinforced Concrete
- Concrete

Characteristics

Historically compatible thanks to the selection of the same type of rock used in lime.

The **exceptional softness** allows the creation of lightweight mortars, easy to work and lay.

The **exceptional vapour permeability** of the plaster makes the masonry highly transpiring.

Excellent **dimensional stability** and slow lime integration prevent cracks and fissures.

Conforms to class **NHL5** of the **UNI EN 459-1** standard.

Appearance



Applications



Quality



Traspirante





Eco-sustainable line for
green building and restoration





Decoratives

Colorado Spugnato
Colorado Frattazzato
Romana Specular
Raso Top bio



Eco-sustainable line for
green building and restoration

Colorado Spugnato

Decorative plaster (CR), environmentally friendly and transpiring, based on nHL5 lime.



Main fields of application

It is particularly suitable to:

Plaster masonry before laying other products of the Naturalis line in environmentally friendly cycles. Suitable for creating transpiring masonry, even in areas subject to frequent rainfall.

Recommended applications:

Plaster any kind of surface that requires a water-resistant and transpiring decorative finish, with the pleasantly wavy appearance of the hydrated lime left white or pigmented.

- Suitable substrates (indoors or outdoors):
- Plaster-based aerial lime
- Hydraulic lime base plasters
- Lime/cement-based plasters

Characteristics

Smooth and soft: it allows easy application, both precision and deliberately rustic.

The **high transpiration** feature makes it ideal as a final layer of dehumidifying cycles.

Excellent **dimensional stability** and slow lime integration prevent cracks and fissures.

Historically compatible thanks to the use of traditional raw materials such as NHL 5 hydraulic lime.

Conforms to the **GP class** of the **UNI EN 998-1** standard as decorative plaster.

Appearance



Applications



Quality



Traspirante



Eco-sustainable line for
green building and restoration

Colorado Frattazzato

Decorative plaster (CR), pigmentable, environmentally friendly and transpiring, based on NHL5.



Main fields of application

It is particularly suitable to:

Plaster masonry before laying other products of the Naturalis line in environmentally friendly cycles. Suitable for creating transpiring masonry, even in areas subject to frequent rainfall.

Recommended applications:

Plaster any kind of surface that requires a water-resistant and transpiring decorative finish, with the pleasantly wavy appearance of the hydrated lime left white or pigmented.

- Suitable substrates (indoors or outdoors):
- Plaster-based aerial lime
- Hydraulic lime base plasters
- Lime/cement-based plasters

Characteristics

The **high transpiration** feature makes it ideal as a final layer of dehumidifying cycles.

Pigmentable: can be supplied white or coloured with UV-resistant metal pigments.

Smooth and soft: it allows easy application, both precision and deliberately rustic.

Excellent **dimensional stability** and slow lime integration prevent cracks and fissures.

Historically compatible thanks to the use of traditional raw materials such as NHL 5 hydraulic lime.

Conforms to **class R** of the **UNI EN 998-1** standard as renovation mortar.

Appearance



Applications



Quality



Traspirante



Eco-sustainable line for
green building and restoration



Romana Specular

Ultra-fine finish for interiors, eco-friendly and transpiring,
based on natural hydraulic lime.

Main fields of application

It is particularly suitable to:

Plaster masonry before laying other products of the Naturalis line in environmentally friendly cycles.
Suitable for creating transpiring masonry, even in areas subject to frequent rainfall.

Recommended applications:

Making smooth wall finishes, any wall decoration that requires precision and detail.

- Suitable substrates (indoors or outdoors):
- Plaster-based aerial lime
- Hydraulic lime base plasters
- Lime/cement-based plasters

Characteristics

Extra-fine: thanks to the micronised materials, it allows you to create ultra-flat or specular finishes.

Smooth and soft: it allows easy application, both precision and deliberately rustic.

The **high transpiration** feature makes it ideal as a final layer of dehumidifying cycles.

Excellent **dimensional stability** and slow lime integration prevent cracks and fissures.

Appearance



Applications



Quality



Traspirante



Eco-sustainable line for
green building and restoration

Raso Top Bio

Transpiring fibre-reinforced NHL5-based adhesive/smoothing agent, ideal for environmentally friendly EWI systems.



Main fields of application

It is particularly suitable to:

Glueing and slim coating of transpiring panels of rock wool, cork, wood fibre Slim coat masonry that require high transpiration feature.

Recommended applications:

Paste the most common types of insulating panels (including EPS and XPS).

Slim coat any kind of lime or cement-based surface.

- Suitable substrates (indoors or outdoors):
- Lime-based plasters
- Lime/cement-based plasters
- Clay brick
- Precast or cast-in-place concrete
- Autoclaved aerated concrete
- Old paint and coatings provided they are clean, thick and well anchored to the substrate

Characteristics

Environmentally friendly thanks to the use of materials such as NHL lime, additives and inert material of natural origin.

The transpiring and water repellency feature allows the creation of lightweight mortars, easy to work and lay.

The high adhesion feature makes it a product suitable for any substrate, exceptional for styling.

Smooth and soft: it allows easy application, both precision and deliberately rustic.

Conforms to class R of UNI EN 998-1 and class M5 of the UNI EN 998-2 standard.

Appearance



Applications



Quality



Traspirante





Lime Systems

Examples of applications



Eco-sustainable line for
green building and restoration





Basic Lime System

① Substrate

② Base plaster

Romana Intonaco

Eco-compatible restoration plaster

③ Finishing plaster

Colorado Spugnato

Eco-compatible tintable decorative plaster based on hydrated lime

Colorado Frattazzato

(pigmented in mass)

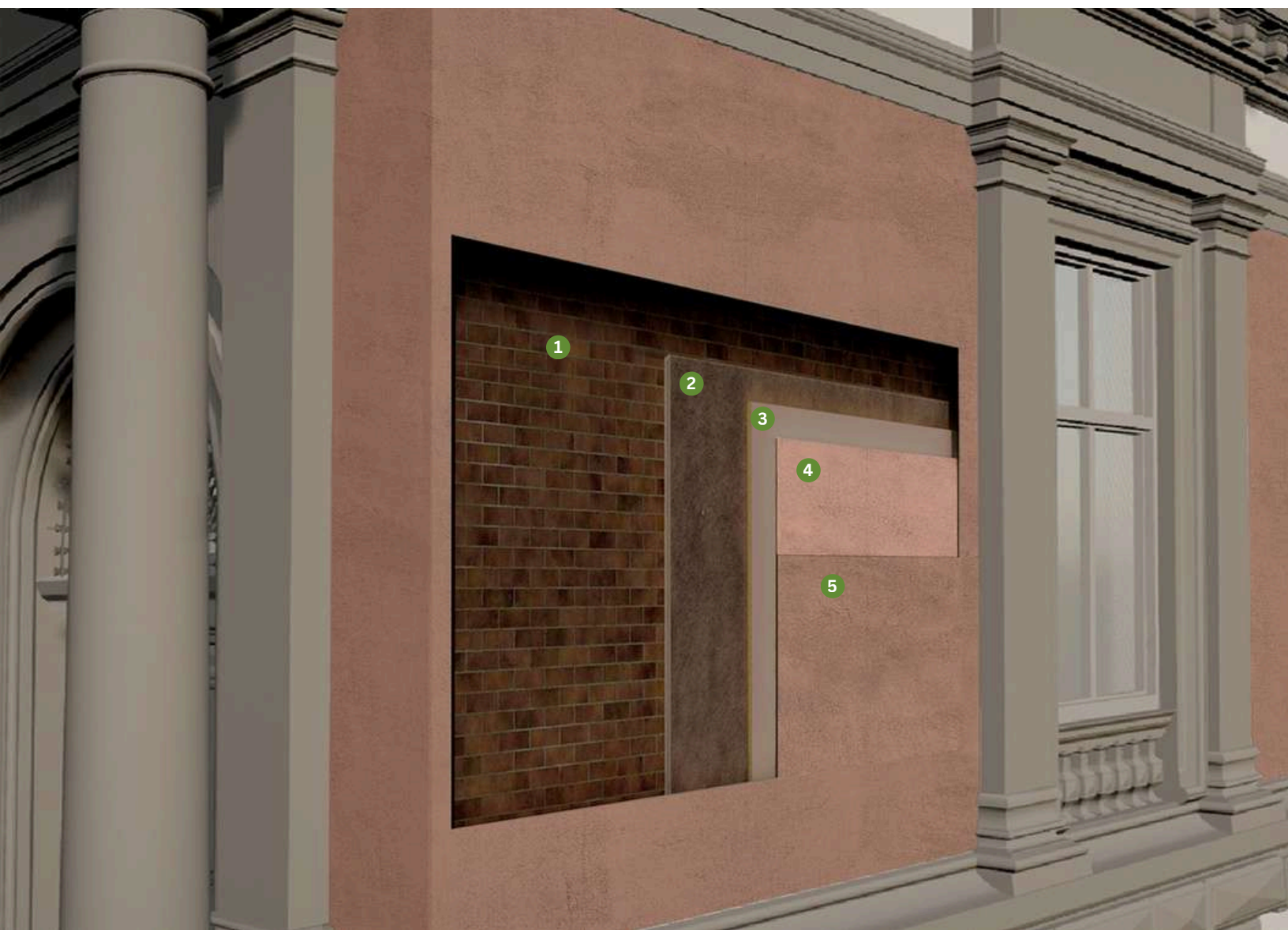
④ Water-repellent protection

Hidro Rep

Silicone water repellent



Eco-sustainable line for
green building and restoration





Water-repellent Lime System

1 Substrate

2 Base plaster

Romana Intonaco

Eco-compatible restoration plaster

3 Smoothing plaster

Raso Top Bio

Fiber-reinforced adhesive smoothing plaster based on hydraulic lime

Colorado Spugnato

Eco-compatible tintable decorative plaster based on hydrated lime

4 Preparation for coating

Primer Ocram

Tintable primer based on potassium silicate

Alternatively

Siloxan LG

Tintable primer based on siloxane resins

4 Finish

Licatasil

Potassium silicate paste coating

Alternatively

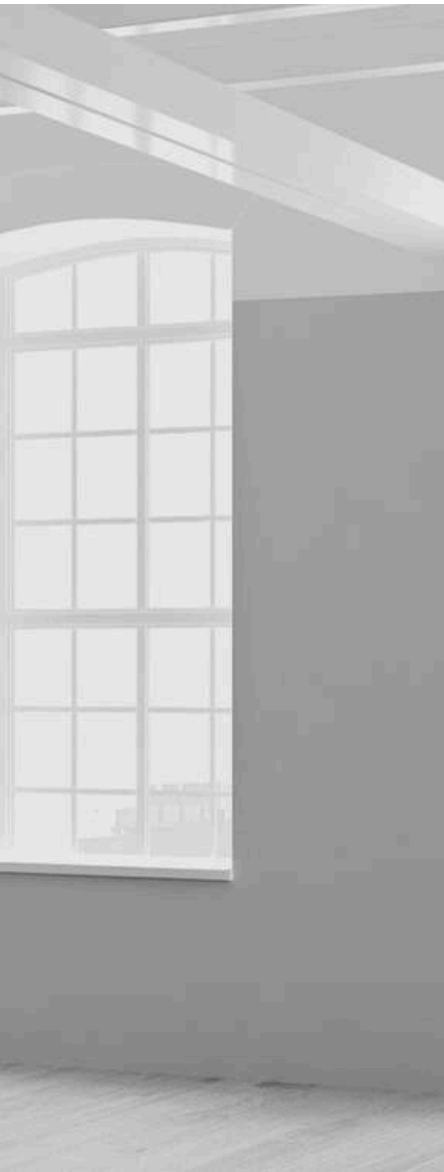
Siloxan Color - Silicone Render

Siloxane resin-based paste coating



Eco-sustainable line for
green building and restoration





Interior Lime System

1 Substrate

2 Base plaster

Romana Intonaco

Eco-compatible restoration plaster

3 Smoothing plaster

Colorado Spugnato

Eco-compatible tintable decorative plaster based on hydrated lime

4 Smooth finish

Romana Specular

Ultrafine eco-compatible interior finish

5 Preparation for painting

Sil Primer

Fixative primer based on potassium silicate

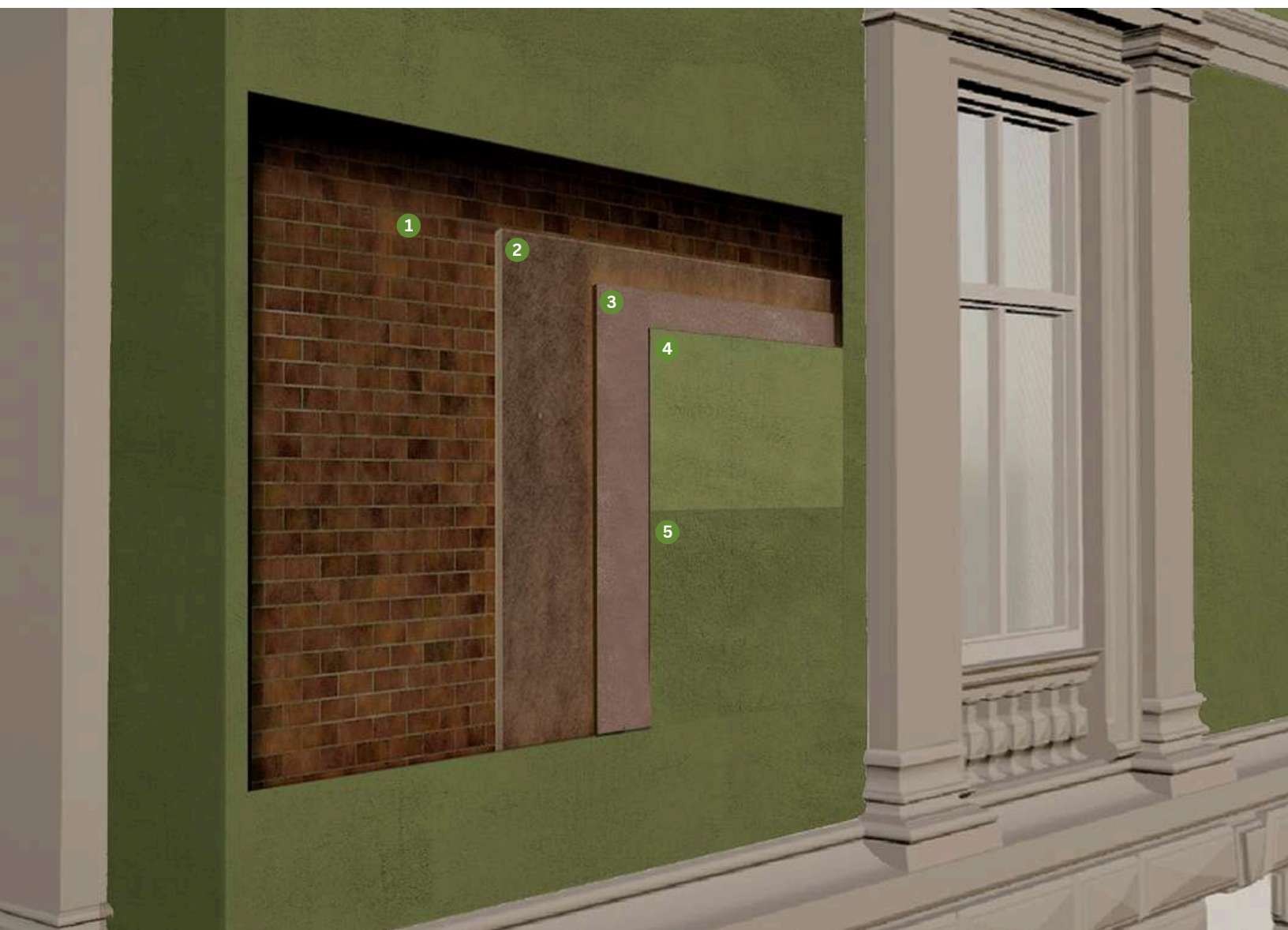
6 Paint

Idrosil Interior

Potassium silicate paint



Eco-sustainable line for
green building and restoration





Lime System with Micro Coating

1 Substrate

2 Base plaster

Romana Intonaco

Eco-compatible restoration plaster

3 Smoothing plaster

Colorado Spugnato

Eco-compatible tintable decorative plaster based on hydrated lime

4 Preparation for coating

Sil Primer

Fixative primer based on potassium silicate

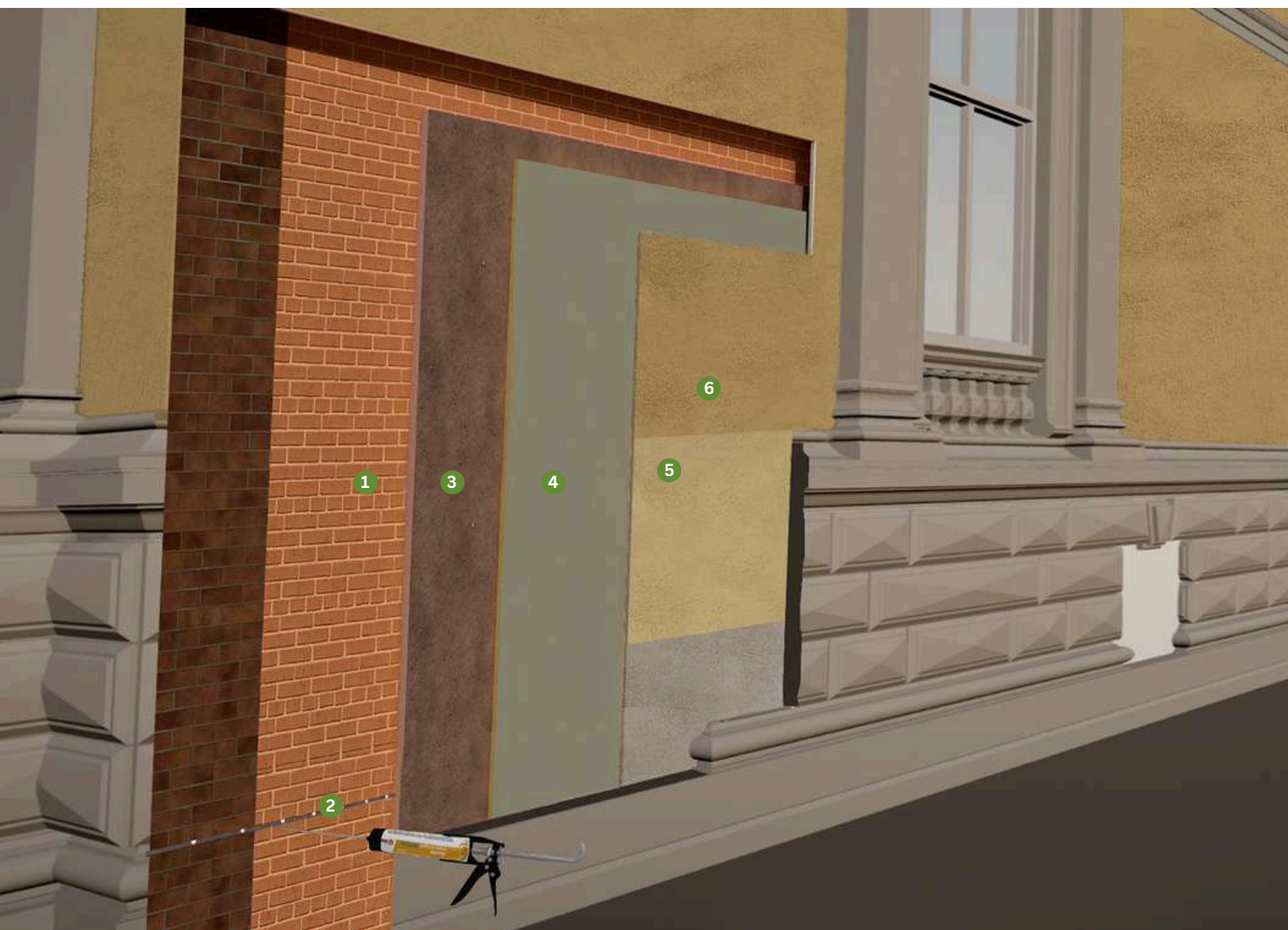
5 Finish with micro-coating

Idrosil Exterior

Potassium silicate micro-coating



Eco-sustainable line for
green building and restoration





Dehumidifying Lime Systems

1 Substrate

2 Chemical barrier

Licata Injecto Gel

Eco-compatible restoration plaster

3 Base plaster

Storica Deumidificante

Waterproof, fiber-reinforced, and breathable restoration plaster

4 Smoothing plaster

Raso Top Bio

Fiber-reinforced adhesive smoothing plaster based on hydraulic lime

Colorado Spugnato

Eco-compatible tintable decorative plaster based on hydrated lime

5 Preparation for coating

Siloxan LG

Tintable primer based on siloxane resins

5 Finish

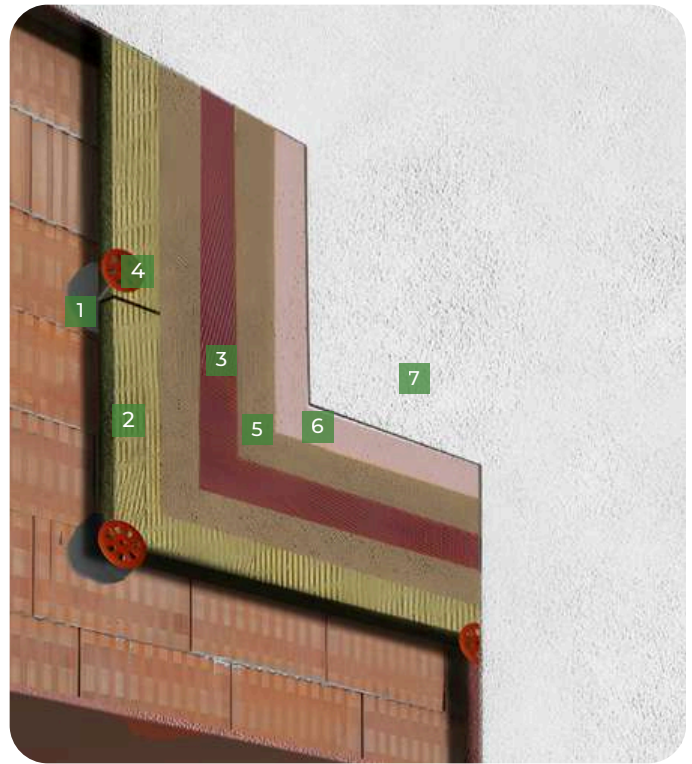
Siloxan Color - Silicone Render

Siloxane resin-based paste coating

EcoPure EWI

System Build Up

1	Adhesive	<i>Raso Top Bio</i>
2	Insulation	<i>EPS / MW / Woodfibre</i>
3	Mesh	<i>LicARMesh</i>
4	Fixings	<i>Swifix 60yr</i>
5	Basecoat	<i>Raso Top Bio</i>
6	Primer	<i>Primer</i>
7	Top Coat	<i>Siloxan</i>



Key Benefits of the EcoPure EWI System

Environmental & Cost Advantages

- **Lower carbon footprint** from production emissions.
- **Reduced maintenance costs** due to improved durability and impact resistance.
- **Faster installation** with a **single-coat armoured mesh**, reducing labour time.
- **Higher breathability**, minimising damp-related issues.

Technical Feasibility & Durability

- **200% increase in impact resistance**, offering superior protection.
- **50% improvement in water vapour permeability**, reducing mould risk.
- **Thicker application capability**, eliminating the need for an additional levelling coat.
- **12.5% increase in thermal performance** compared to standard cement-based systems.



Eco-sustainable line for
green building and restoration



Licata EcoPure EWI System

Sustainable External Wall Insulation for Energy Efficiency

The Licata EcoPure EWI System is an innovative, low-carbon external wall insulation (EWI) solution designed to enhance energy efficiency while reducing environmental impact. By aligning with the UK's sustainability objectives, EcoPure offers a superior alternative to traditional systems, lowering carbon emissions and improving long-term building performance.

Why Choose the EcoPure EWI System?



Lower Carbon Emissions

- By reducing heating and cooling demand, EcoPure significantly cuts carbon emissions.
- Traditional EWI systems contain cement-based renders, contributing to CO2 emissions, whereas EcoPure replaces cement with sustainable alternatives, reducing embedded carbon by 97%.



Improved Energy Efficiency

- Significantly enhances insulation performance, reducing energy consumption and lowering heating costs.
- Provides a robust thermal envelope, ensuring greater energy savings and improved comfort for occupants.



Renewal of Old Housing Stock

- Enhances the energy performance of older buildings while improving aesthetics.
- Extends the lifespan of properties by offering superior protection against environmental factors.



Enhanced Comfort & Living Conditions

- Maintains a stable indoor climate throughout the year.
- Reduces the occurrence of dampness, condensation, and drafts, leading to healthier indoor environments.



Contribution to Net-Zero Goals

- Supports the UK government's sustainability initiatives by significantly reducing carbon output.
- Offers a long-term, environmentally responsible insulation solution.





Eco-sustainable line for
green building and restoration

Sustainability Commitment

At Licata, we go beyond product innovation to ensure responsible delivery and implementation



Eco-friendly transportation,
including electric truck
deliveries and solar-powered
distribution centres.



**Nature-based carbon offset
initiatives** to neutralise
remaining emissions.



**Commitment to sustainable
construction,** helping the
industry transition towards
greener solutions.





Eco-sustainable line for
green building and restoration

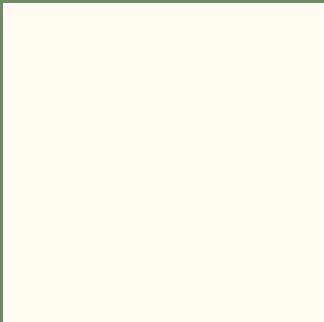
Colorado COLLECTION

The color references are to be considered purely indicative as they are printed with products different from the actual ones.

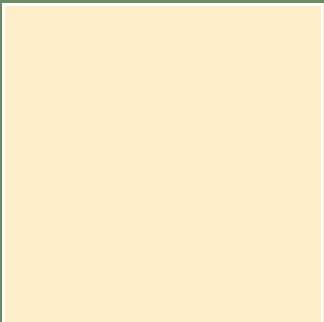
To evaluate the true shade of the chosen product, it is necessary to request a sample.

Always check the material before application to ensure that the color shade matches the requested one.

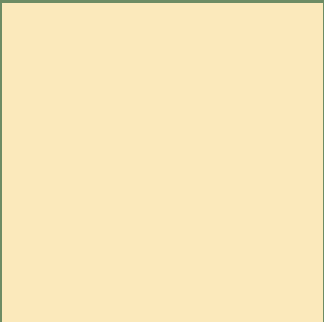
Any claims regarding the color shade will not be accepted after application.



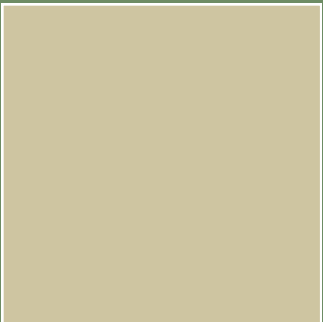
1/10 Colorado



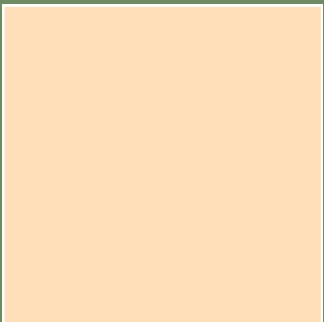
1/11 Colorado



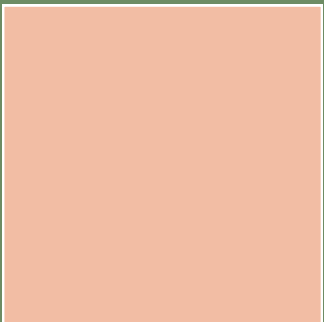
1/12 Colorado



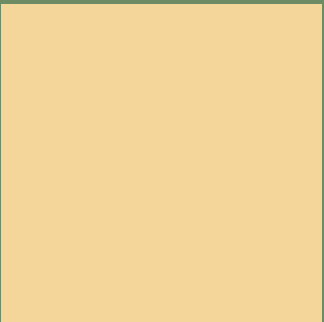
1/16 Colorado



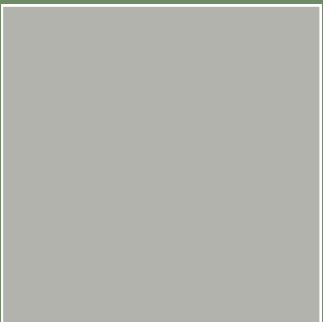
1/21 Colorado



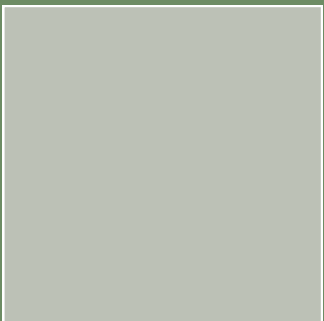
1/33 Colorado



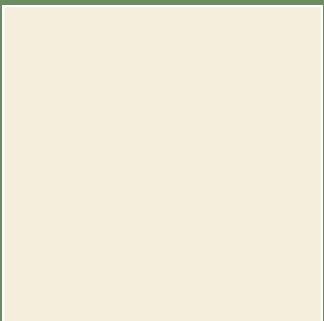
1/41 Colorado



1/72 Colorado



1/74 Colorado



1/70 Colorado



1/71 Colorado



Twickenham

Unit 6, Hampton Business Park
Bolney Way, Twickenham
TW13 6DB, United Kingdom

Tel: 020 8894 3372

Southgate

Unit 5 Brunswick Industrial Park
Southgate
N11 1JL, United Kingdom

Tel: 020 3987 0200

Dartford

Unit 4 Schooner Park
Schooner Court, Dartford
DA2 6NW, United Kingdom

Tel: 01322 927 600

Birmingham

Unit 17 Frankley Industrial Estate
Tay Road, Frankley
B45 0LD, Birmingham, United Kingdom

Tel: 0121 667 2412

Manchester

Unit 6C Stanley Green Trading Estate,
Cheadle Hulme
SK8 6RB

Tel: 0161 949 0035

Essex

Shades House
Hodgson Way, Wickford
SS11 8YD

Tel: 0126 839 5828

