

RENDER SYSTEMS

NEW BUILD | REBUILD | RENOVATE

www.licataltd.co.uk

Contents

INTRODUCTION

Our Philosophy	pg 2
A Success Story	pg 4

LICATA RENDER SYSTEMS

New Blockwork Render System	pg 7
Existing Render/Paint Render System	pg 9
Thermalite Block Render System	pg 11
Monocouche Render System	pg 13
Panel Substrate Render System	pg 15
Anti-Crack Render System	pg 17
Plaster Render System	pg 19

LICATA SYSTEM FINISHES

Top Coat Render	pg 21
Mineral Brick Slips	pg 23
Clay Brick Slips	pg 24

Our Philosophy

To build, rebuild & recover

Colour is emotion: It rekindles memories and sensations in the memory.

Red and white are Licata's identifying colours, making colour its essence. The choice is not accidental. Red recalls the passion that animates the company at every stage, from design to production, and white alludes to the pages of the book to which the company entrusts its history, a story in constant evolution. Team spirit is its strength, whoever is part of it feels the protagonist in the realisation of the company mission:

BUILD, REBUILD, RECOVER.

Strong in the past and with a drive towards innovation. The company builds its own identity on the dialogue between past and future: projected towards innovation with a solid synergy between the needs of eco-compatibility, economy, functionality and living comfort.

Advanced technology for efficiency and productivity

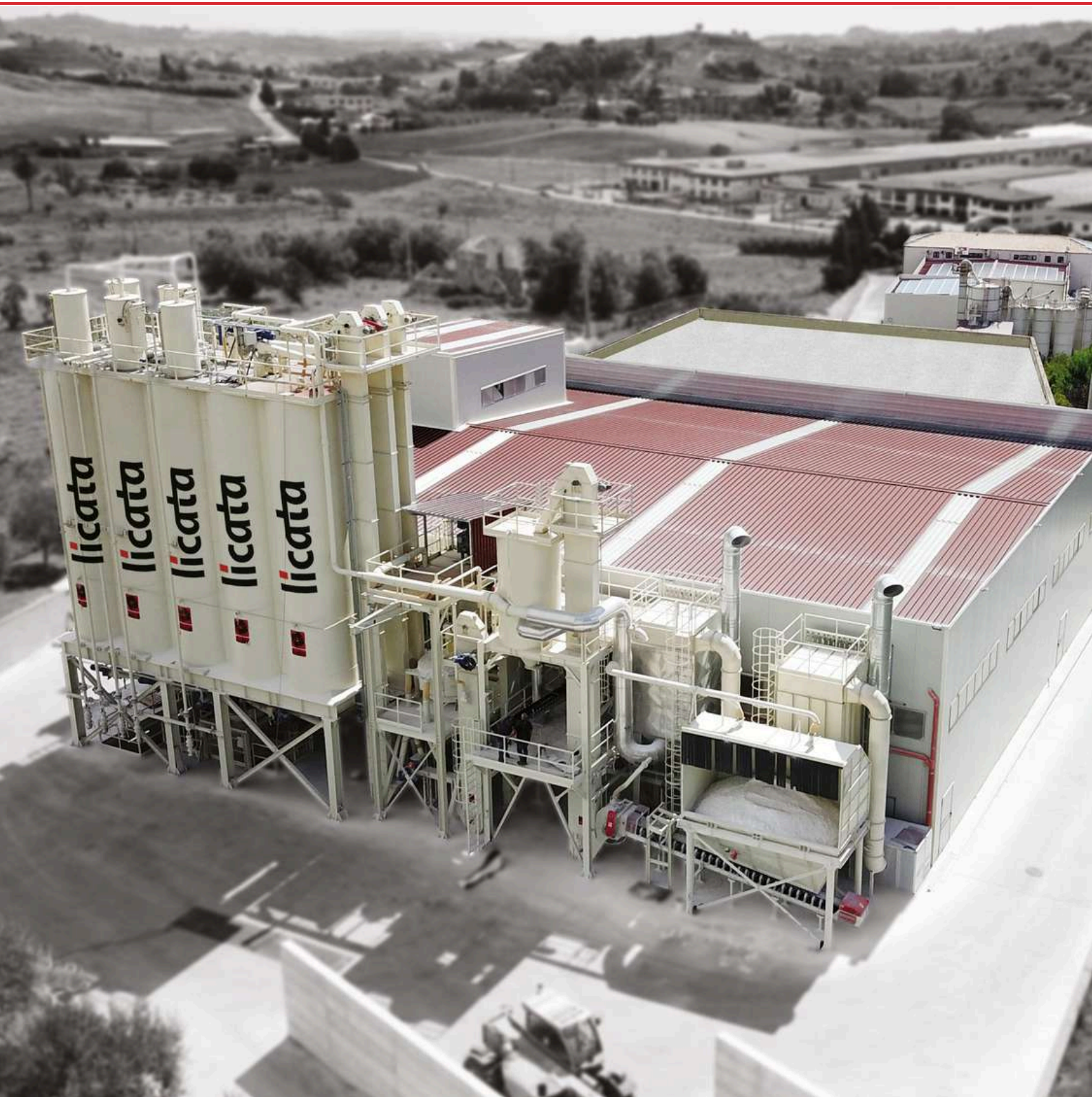
Research and development are a constant commitment of Licata, which invests in innovative technologies and up-to-date, specialised personnel.

The laboratories not only carry out an in-depth analysis of incoming raw materials and finished materials but are also geared towards the development of solutions that are in step with the times and meet the increasingly pressing need for sustainable choices that combine environmental protection with functionality and economy.

The plants are state-of-the-art and ensure the entire production chain is fast and efficient.



Over **40 Years** of Research & Development



A Success Story

Licata has its roots in Italy in the early 1980s is now positioned in the professional building sector as a relevant producer of systems and solutions for conservative refurbishment as well as innovative systems for new buildings.

Our dedication to innovation through extensive research, development and testing helped drive decades of growth. This is how we continue to provide top-quality building solutions here in the UK.

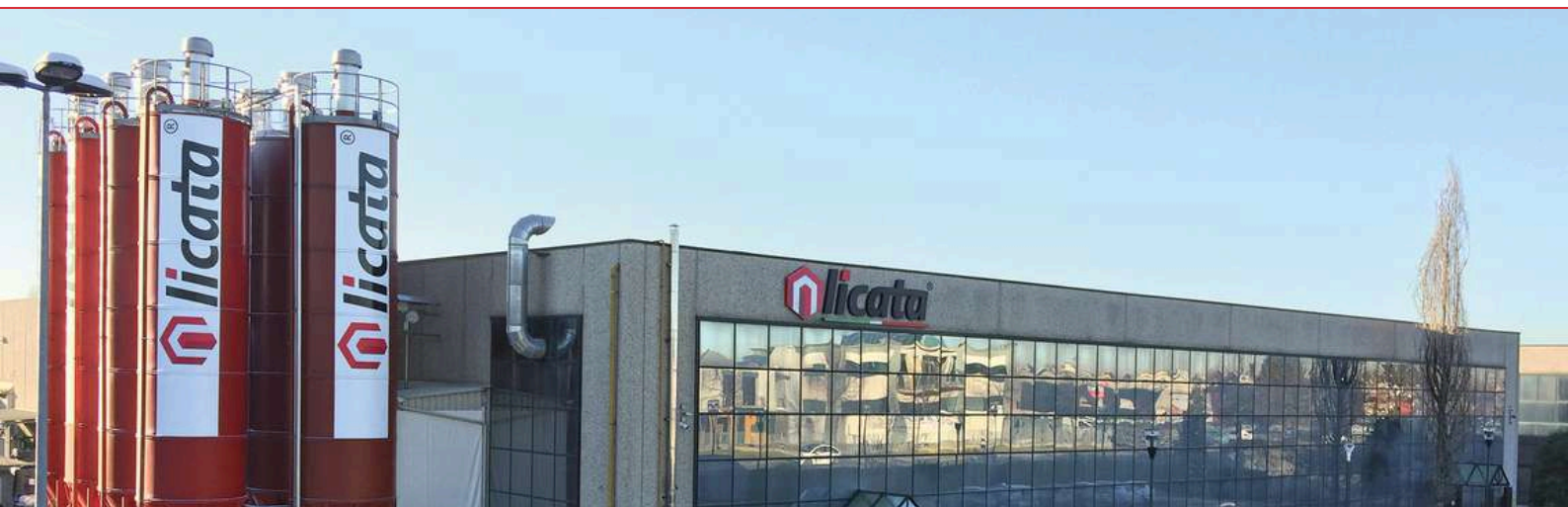


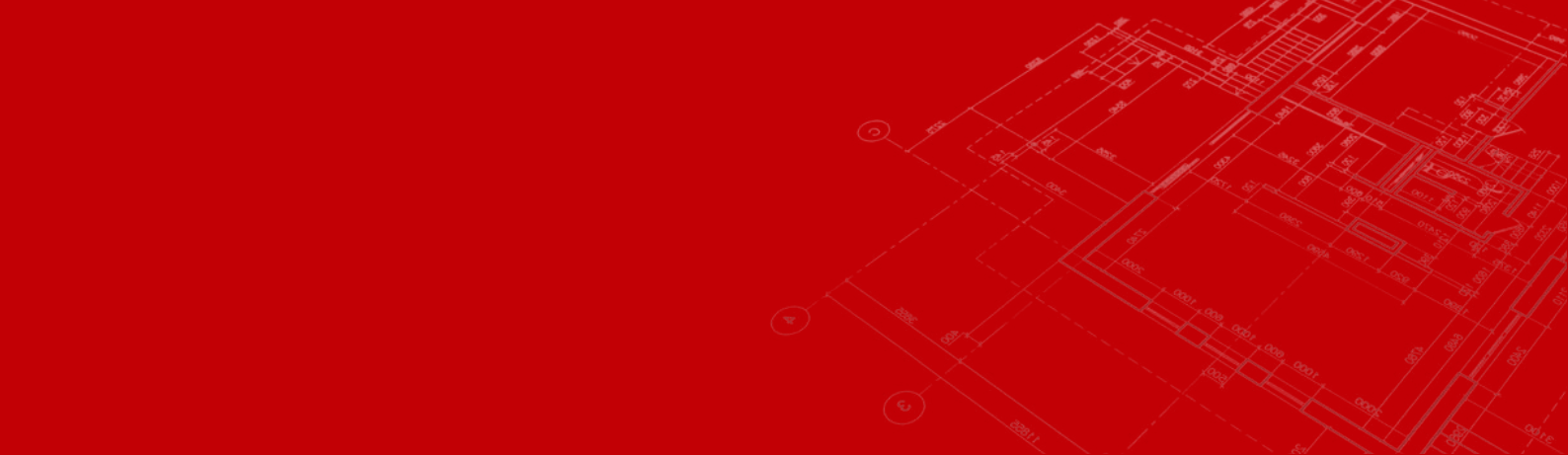
We provide innovative building solutions for any residential or commercial projects, from new-build to refurbishment, inside or out, and in a range of different construction environments.

Our vast product range offers you external wall insulation (EWI) and render systems, versatile and durable waterproofing solutions, high-quality flooring, and a diverse range of high-grade, secure and attractive facade finishes.

Licata's dedicated research and development laboratories perform in-depth analysis on all our materials, and we are proud to provide the most comprehensively tested systems range in compliance with BBA, ETA, ETAG004, ISO9001, and BS476 standards.

Licata Building Systems is your go-to provider of modern, sustainable, superior-quality building solutions that are both effective and affordable.





-  **London, UK**
2 commercial branches
-  **Kent, UK**
commercial branch
-  **Birmingham, UK**
commercial branch
-  **Manchester, UK**
commercial branch
-  **Essex, UK**
commercial branch

-  **Sicily, Italy**
liquid production plant
powder production plant
-  **Bergamo, Italy**
liquid production plant
powder production plant
-  **Padua, Italy**
special production plant





NEW BLOCKWORK RENDER SYSTEM

Licata's New Blockwork Render System is a high-performance façade solution that is easy to install, durable, and versatile. It features a water-repellent surface that protects against algae and mould while offering excellent drying times. Reinforced with glass fibre mesh, this system provides superior strength and crack resistance.

For the perfect decorative finish, choose from:

Silicone Render

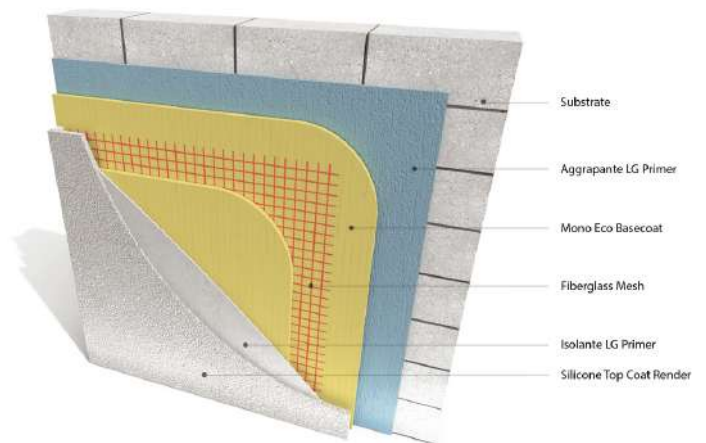
Available in over 700 colours with excellent weather resistance.

Clay Brick Slips

A natural and traditional brick finish.

Mineral Brick Slips

Lightweight and durable, offering a realistic brick effect.



Key Features & Benefits

- + Suitable for Various Substrates – Ideal for brickwork, blocks, and concrete surfaces.
- + Lightweight & Flexible – Perfect for both new builds and refurbishments where the substrate is level.
- + Highly Durable – Waterproof, vapour permeable, and weather-resistant for long-lasting performance.
- + Glass Fibre Mesh Reinforcement – Improves crack resistance and overall strength.
- + Factory-Batched Leveller – Ensures consistent application and superior adhesion compared to sand and cement.
- + Customisable Finish – Choose from silicone render, clay brick slips, or mineral brick slips for the desired aesthetic.
- + Grain Sizes from 0.7mm to 2.5mm – Available in a variety of textures.
- + Cost-Effective – An economic render system designed for efficiency and durability.

Application Guidelines

Surface Preparation – Blockwork should be constructed to fair-face tolerances.

Levelling – Suitable for levelling uneven substrates before applying the final render.

Expansion Joints – Must be installed at the correct intervals based on construction type and carried through the render system.

Primer – May not be required. Contact Licata for guidance on selecting the correct primer and render system for your project.



Aggrappante LG Substrate Primer

Universal pigmented primer, ready to use, specific as a bonding bridge for cycles of plastering, on smooth and absorbent surfaces.



MonoEco Base Coat

Fibre-reinforced adhesive/skim coat, polymer modified, for indoor and outdoor use, based on hydraulic binders.



Fiberglass Mesh

Licata Fiberglass Mesh 160 - fibreglass alkali-resistant mesh meets the highest non-tear and impact resistance standards.



Isolante LG Top Coat Primer

Universal pigmentable primer based on acrylic and inert copolymers of siliceous nature, for external use, with high coating strength and excellent smoothing properties



Silicone Top Coat Render

Paste coating, ready to use with high water-repellent and excellent vapour permeability, certified according to EWI standards. Boasting excellent anti-mould and anti-algae properties. To be used as a decorative finish in Licata Render Systems and in all cycles where a high water vapour permeability is required.

EXISTING RENDER/PAIN RENDER SYSTEM

Licata's Existing Render/Paint Render System has been designed for substrates that have already had render applied previously. Breathable with great adhesion and spreadability. With increased strength and crack resistance, due to the glass fibre mesh. Choose from brick slips, coloured render or resin multi-colour for the decorative finish.

For the perfect decorative finish, choose from:

Silicone Render

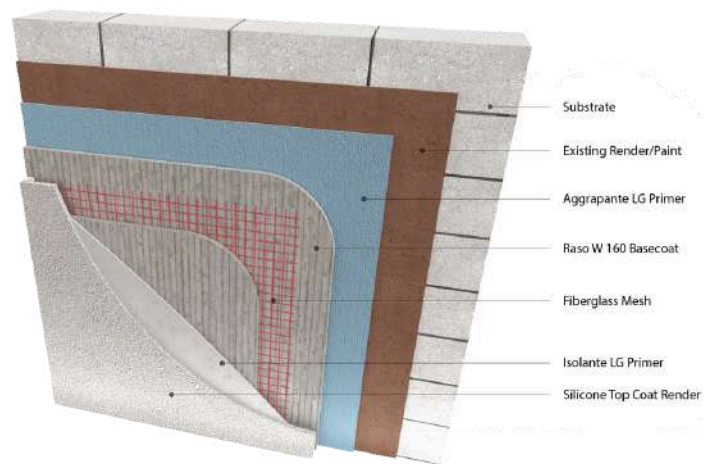
Available in over 700 colours with excellent weather resistance.

Clay Brick Slips

A natural and traditional brick finish.

Mineral Brick Slips

Lightweight and durable, offering a realistic brick effect.





Aggrappante LG Substrate Primer

Universal pigmented primer, ready to use, specific as a bonding bridge for cycles of plastering, on smooth and absorbent surfaces.



Raso W160 Base Coat

Fibre-reinforced adhesive/skim coat, polymer modified, for indoor and outdoor use, based on hydraulic binders.



Fibreglass Mesh

Licata Fibreglass Mesh 160 - fibreglass alkali-resistant mesh meets the highest non-tear and impact resistance standards.



Isolante LG Top Coat Primer

Universal pigmentable primer based on acrylic and inert copolymers of siliceous nature, for external use, with high coating strength and excellent smoothing properties



Silicone Top Coat Render

Paste coating, ready to use with high water-repellent and excellent vapour permeability, certified according to EWI standards. Boasting excellent anti-mould and anti-algae properties. To be used as a decorative finish in Licata Render Systems and in all cycles where a high water vapour permeability is required.

THERMALITE BLOCK RENDER SYSTEM

Licata's Thermalite Block Render System has been designed for substrates built with thermalite blocks. Featuring weather resistance and anti-algae and mould properties. With increased strength and crack resistance, due to the glass fibre mesh. Choose from brick slips, coloured render or resin multi-colour for the decorative finish.

For the perfect decorative finish, choose from:

Silicone Render

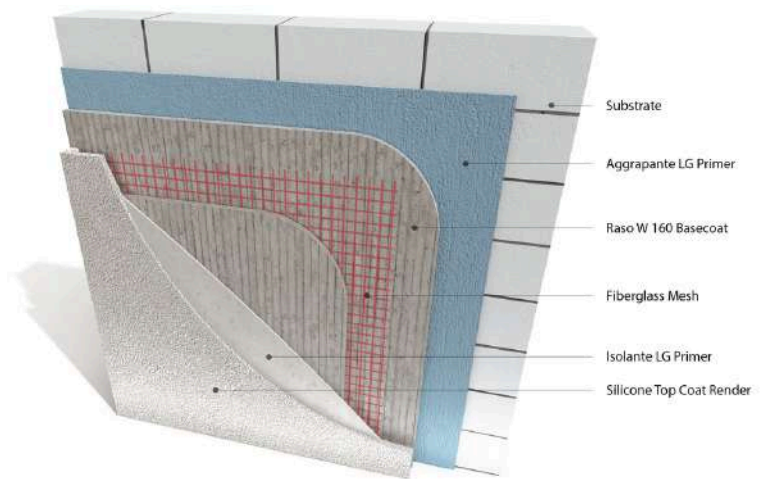
Available in over 700 colours with excellent weather resistance.

Clay Brick Slips

A natural and traditional brick finish.

Mineral Brick Slips

Lightweight and durable, offering a realistic brick effect.



Area of Application

- + Suitable for application onto thermalite concrete blocks

Method of Application

- + Levelling uneven substrates - Before applying the render system, any uneven areas in the substrate should be levelled to create a consistent surface. This helps ensure proper adhesion and a uniform finish while reducing the risk of cracking or system failure over time.
- + Block work should be constructed to fair - face tolerances
- + Ready to use components - The render system consists of ready-to-use components, simplifying the application process and ensuring consistency. This reduces the need for on-site mixing while maintaining the high performance and reliability of the finished system.
- + Expansion joints must be used on the correct intervals for the construction type and take through the render system
A primer coat may not be required, to ensure correct products are used to create and receive the render system

Features & Benefits

- + High water repellency
- + Good water vapour permeability
- + Protects against mould and algae
- + Available in wide range of colours and grain sizes (0.7mm - 2.5mm)



Aggrappante LG Substrate Primer

Universal pigmented primer, ready to use, specific as a bonding bridge for cycles of plastering, on smooth and absorbent surfaces.



Raso W160 Base Coat

Fibre-reinforced adhesive/skim coat, polymer modified, for indoor and outdoor use, based on hydraulic binders.



Fibreglass Mesh

Licata Fibreglass Mesh 160 - fibreglass alkali-resistant mesh meets the highest non-tear and impact resistance standards.



Isolante LG Top Coat Primer

Universal pigmentable primer based on acrylic and inert copolymers of siliceous nature, for external use, with high coating strength and excellent smoothing properties



Silicone Top Coat Render

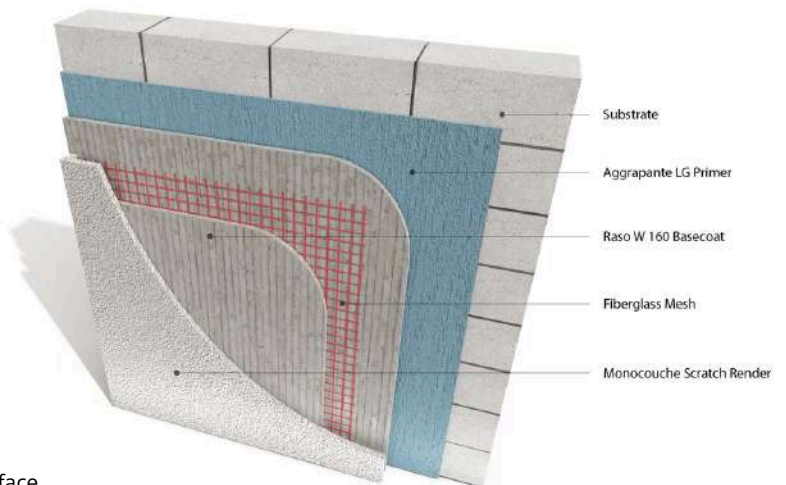
Paste coating, ready to use with high water-repellent and excellent vapour permeability, certified according to EWI standards. Boasting excellent anti-mould and anti-algae properties. To be used as a decorative finish in Licata Render Systems and in all cycles where a high water vapour permeability is required.

MONOCOUCHE RENDER SYSTEM

Licata Building Systems Scratch Render is a one coat pre-mixed render. UV resistant and has waterproof natural additives.

Scratch Render is ideally suited to create a rustic or stone effect and is designed for application at a thickness of typically 12 mm, before being scraped back using a nail float to achieve a thickness of approximately 10 mm.

It is a product with high reliability in terms of duration and is particularly appreciated for its aesthetic beauty. The water repellent surface reduces water absorption and improves resistance to algae growth and requires very little maintenance.



Area of Application

- + Suitable for brickwork, blocks, concrete substrates, painted surface
- + Lightweight and flexible
- + Suitable for new builds and refurbishments, where the substrate is good and level.

Maintenance

If staining occurs to the render this can easily be cleaned by using suitable cleaning detergent and a warm power washer. Care must be taken to ensure the pressure of the water is right so no surface damage is caused to the render in the cleaning process. A fungicidal wash can be beneficial to help prevent the growth of algae especially on facades that take the brunt of the weather, which can be prone to algae growth due to prolonged periods of wetness. We are also compatible with a range of anti-graffiti treatments.

Features & Benefits

- + One coat for fast application and short program periods
- + Available 16 standard colours.
- + Factory produced for consistency of proportioning
- + Good vapour permeability
- + Ready mixed - only water required to be added on site for ease of use
- + Can be applied by hand or by spray machine.



Aggrappante LG Substrate Primer

Universal pigmented primer, ready to use, specific as a bonding bridge for cycles of plastering, on smooth and absorbent surfaces.



Raso W160 Base Coat

Fibre-reinforced adhesive/skim coat, polymer modified, for indoor and outdoor use, based on hydraulic binders.



Fibreglass Mesh

Licata Fibreglass Mesh 160 - fibreglass alkali-resistant mesh meets the highest non-tear and impact resistance standards.



Monoscratch 300 Monocouche Render

Fibre-reinforced adhesive-skim coat, polymer-modified, for indoor and outdoor use, based on hydraulic binders.

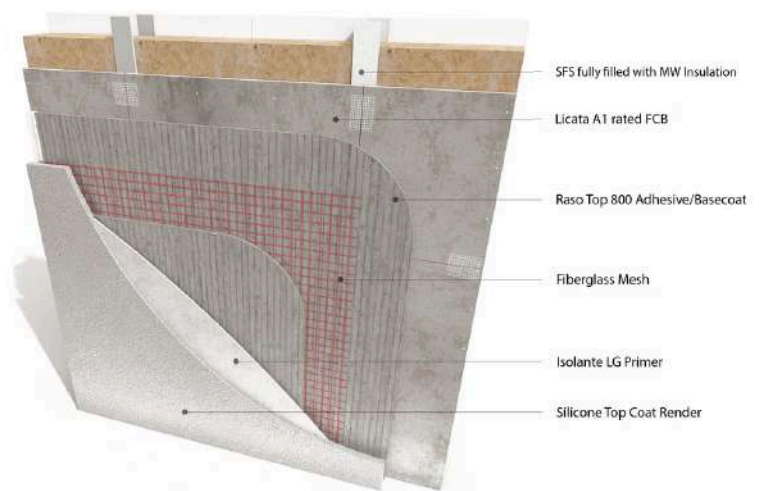
PANEL SUBSTRATE RENDER SYSTEM

Licata PSS (Panel Substrate System) is a system designed to produce a textured finish on a wide range of render substrate board.

With all the new building methods in the construction industry builders and developers are always looking for faster cheaper energy efficient methods of building and this is why more and more projects are utilising timber and light weight steel frame systems which enable the exterior facade to be dosed off sooner and allow many different aesthetic finishes.

This makes thin coat renders perfect for such applications, providing excellent water resistant finishes to a large range of substrates, including new and old brickwork/blockwork, concrete, steel and timber framed buildings, when used in conjunction with a suitable render carrier boards.

The render substrate board surface is protected with 6mm thick glassfibre mesh cloth, reinforced coat of Raso Top 800 and a coat of one of Licata Building Systems renders.



Features & Benefits

Suitable For Steel & Timber Frames The Licata substrate render board system is compatible with steel and timber substrates and will work equally well with either one. You can expect decades of reliable performance, energy savings and enhanced kerb appeal whether you choose a steel frame or timber frame foundation.

Weather Resistant – kerb appeal is all very well and good, but if this type of panel substrate render system is not capable of standing up to the extreme weathering forces it will encounter then it isn't worth much. Not to worry. When it comes to render manufacturers Licata is unmatched in producing world-class external render carrier board systems that stand resolute in the face of nature's relentless onslaught.

Protects Against Algae & Mould – with external render board systems, there is concern it could play host to algae and mould. If true this would undermine the attractiveness of the render finishes and pose a potential health hazard. Fortunately, the Licata panel substrate render system is algae and mould resistant. Enjoy long term peace of mind knowing this type of render system will retain its looks and never pose a health risk.

Excellent Drying Time – Licata external silicone render finishes are quick drying which provides maximum flexibility when it comes to choosing an application time. Simply choose an application window when rain and frost is not anticipated for several days.

Breathable & Lightweight – our panel substrate render system seals your home against the elements and produces a significant bump in energy efficiency. It's also highly breathable to prevent moisture from undermining the efficacy of the system, and lightweight so as not to put undue stress on external walls.

Durable & Water Repellent – a Licata panel substrate render system is not a stop-gap measure to be used until something better comes along. It is a long term solution that is both durable and water repellent. This high strength render board system is dimensionally stable and demonstrates a high degree of impact resistance.



A1 Fibre Cement Board

Licata multipurpose cement board is made using revolutionary HSPC technology. This unique technology makes these boards totally moisture, termite and fire resistant.



Raso Top 800 Base Coat

Fibre-reinforced adhesive/skim coat, polymer modified, for indoor and outdoor use, based on hydraulic binders.



Fibreglass Mesh

Licata Fibreglass Mesh 160 - fibreglass alkali-resistant mesh meets the highest non-tear and impact resistance standards.



Isolante LG Primer

Universal pigmentable primer based on acrylic and inert copolymers of siliceous nature, for external use, with high coating strength and excellent smoothing properties



Silicone Top Coat Render

Paste coating, ready to use with high water-repellent and excellent vapour permeability, certified according to EWI standards. Boasting excellent anti-mould and anti-algae properties. To be used as a decorative finish in Licata Render Systems and in all cycles where a high water vapour permeability is required.

ANTI-CRACK RENDER SYSTEM

Licata's Anti-Crack Render System is perfect for unstable substrates. The combination of our Rasotherm 500 Plus and glass fibre mesh provides ultimate crack resistance. Featuring a water repellent surface that protects against algae and mould, with the added benefit of excellent drying time.

Area of Application

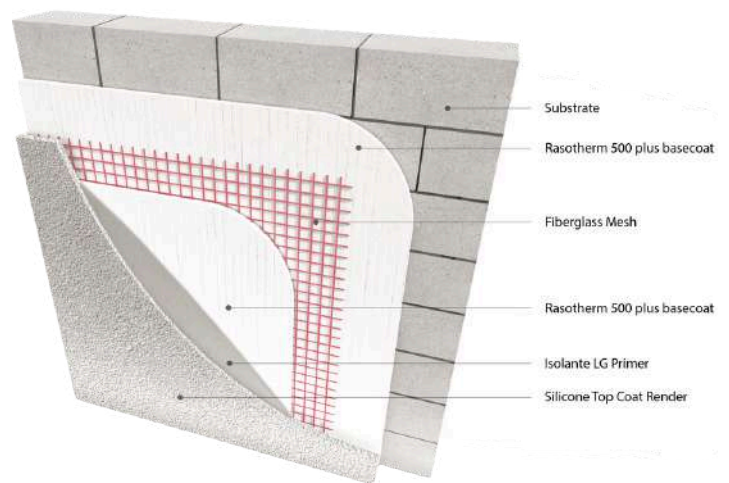
- + Suitable for brick work, blocks, concrete substrates
- + Lightweight and flexible
- + Incorporates light weight reinforcement for additional system durability
- + Suitable for new builds and refurbishments, where the substrate is good and level

Features

- + Factory batched leveller
- + MonoEco levelling coat to overcome uneven substrates
- + Available in a range of colours to suit every building
- + Grain size 1mm up to 2mm
- + Rasotherm 500 Plus reinforcing with fibreglass mesh to give the ultimate crack resistance over conventional renders
- + Weather proof and vapour permeable

Method of Application

- + Levelling uneven substrates
- + Block work should be constructed to fair - face tolerances
- + Ready to use components
- + Expansion joints must be used at the correct intervals for the construction type and taken through the render system
- + A primer coat may not be required, to ensure correct products are used to create and receive the render system





Rasotherm 500 Plus

Adhesive/skimming putty plaster, ready to use, based on selected synthetic polymers in water dispersion.



Fibreglass Mesh

Licata Fibreglass Mesh 160 - fibreglass alkali-resistant mesh meets the highest non-tear and impact resistance standards.



Isolante LG Primer

Universal pigmentable primer based on acrylic and inert copolymers of siliceous nature, for external use, with high coating strength and excellent smoothing properties



Silicone Top Coat Render

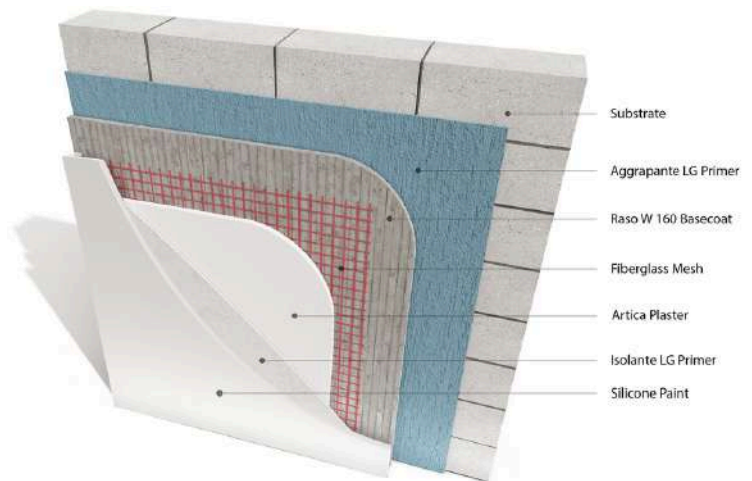
Paste coating, ready to use with high water-repellent and excellent vapour permeability, certified according to EWI standards. Boasting excellent anti-mould and anti-algae properties. To be used as a decorative finish in Licata Render Systems and in all cycles where a high water vapour permeability is required.

PLASTER RENDER SYSTEM

Licata's Plaster Render System is a versatile façade solutions, which can be used on any substrate. Featuring a water repellent surface that protects against algae and mould, with the added benefit of excellent drying time. Durable and weather resistant with excellent adhesion and spreadability.

Area of Application

- + Suitable for brick work, blocks, concrete substrates
- + Lightweight and flexible
- + Incorporates light weight reinforcement for additional system durability
- + Suitable for new builds and refurbishments, where the substrate is good and level



Features & Benefits

- + High mechanical strength and surface resistance - the high-strength hydraulic binders and selected inert fillers with a controlled constant grading curve offer high mechanical strength and surface resistance.
- + Applicable from 0 to 3 mm - the dimensional stability, guaranteed by hygrometric shrinkage close to zero, allows application in thicknesses ranging between 0 and 3 mm in a single coat.
- + Easy workability - The use of special additives and selected inert materials containing micronized marble powder give excellent fluidity and ease of processing, reducing the difficulty of installation to a minimum.
- + Extended pot-life - Licata research and development has dedicated specific studies to the extended pot-life (about 3 hours), an added value that allows to easily retouch the product during the application.
- + High adhesion strength - Artica adheres without the aid of adhesion promoters on most of the substrates used in the construction industry.
- + Grading curve < 200 micron - this characteristic makes Artica ideal as a levelling skimming before decoration with mirror finish mortars, paints and coatings, whether mineral or synthetic.



Aggrapante LG Primer

Universal pigmented primer, ready to use, specific as a bonding bridge for cycles of plastering, on smooth and absorbent surfaces.



Raso W160 Base Coat

Fibre-reinforced adhesive-skim coat, polymer-modified, for indoor and outdoor use, based on hydraulic binders.



Fibreglass Mesh

Licata Fibreglass Mesh 160 - fibreglass alkali-resistant mesh meets the highest non-tear and impact resistance standards.



Artica Plaster

Artica is a cement straightening skim plaster for both indoor and outdoor use, based on white cement, pure selected marble micronised powder aggregates and specific natural additives.



Isolante LG Primer

Universal pigmentable primer based on acrylic and inert copolymers of siliceous nature, for external use, with high coating strength and excellent smoothing properties



Silicone Paint

Transpiring and waterproof acryl-siloxane micro-coating, with excellent anti-mould properties and high resistance to washing.

Licata System **Finishes**



Silicone | Acrylic | Silicate Top Coat Render



Silicone Top Coat Render

Paste coating based on siloxane binder, ready to use with high water-repellent and excellent vapour permeability, certified according to ETICS standards. Boasting excellent anti-mould and anti-algae properties. To be used as a decorative finish in **Licata Render Systems** and in all cycles where a high water vapour permeability is required.



Acrylic Top Coat Render

Paste coating based on acrylic binder ready to use with high water repellence and excellent vapour permeability certified according to ETICS standards. With excellent anti-mould and anti-algae properties, ideal for aesthetic/functional decoration/restoration of facades and for use with **Licata Render Systems**.



Silicate Top Coat Render

Putty mineral coating with a potassium silicate base, ready to use; high breathability and with good water repellency. It has natural anti-mould and anti-algae properties. LicataSil is indicated for the decoration of new or existing facades and for use with **Licata Render Systems**.

Our silicone, silicate and acrylic renders are available in over 1000 different colours from our **Licata Colour Collection** and we can also match to any colour of your choice.



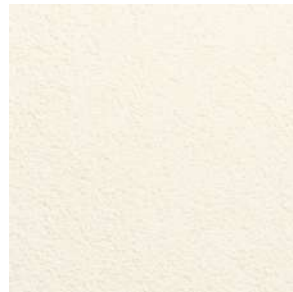
Due to the printing process the below colour samples may show a slight difference compared to the actual product colour. Please view actual product prior to making a colour choice.



Chalk



Ice



Cloud



Vanilla



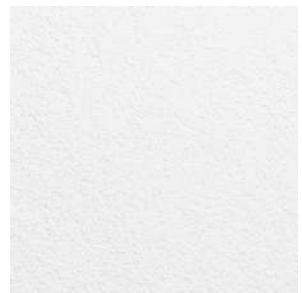
Whisper



Titanium



Stone



Starlight



Smoke



Silver



Silk



Sand



Rice Paper



Pink Lemonade



Pearl



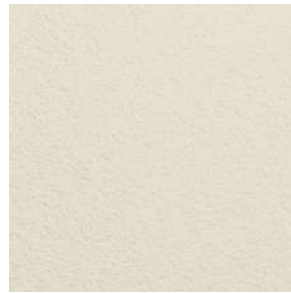
oak



Marigold



Lace



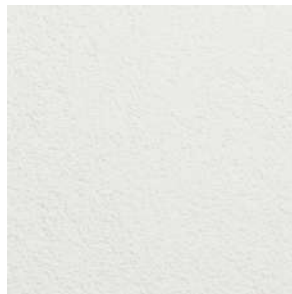
Linen



Gardenia



Frost



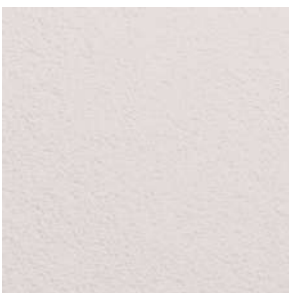
Feather



Earth



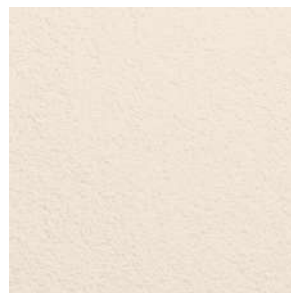
Cosmic



Cotton



Clay



Champagne



Buttermilk

Licata System Finishes

Mineral Brick Slips

Licata's mineral brick slips are mineral-based, made from a mixture of assorted quartz sands and a binding agent. Ideal for new build and renovation projects, they are perfect for façade cladding whilst creating a beautiful aesthetic. Suitable for internal and external use, brick slips are cost-effective and quick to apply. They are durable, weather resistant and come with a 10 year guarantee. Our mineral brick slip range is available in a wide range of sizes, textures and colours.



CANYON



SLATE



LACE



MAROON



RUSTIC



WHEAT



ASH



REDWOOD



VANILLA



DUNE FROST



AMBER SLATE

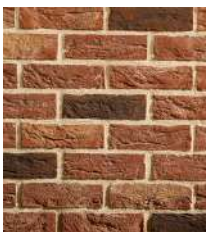
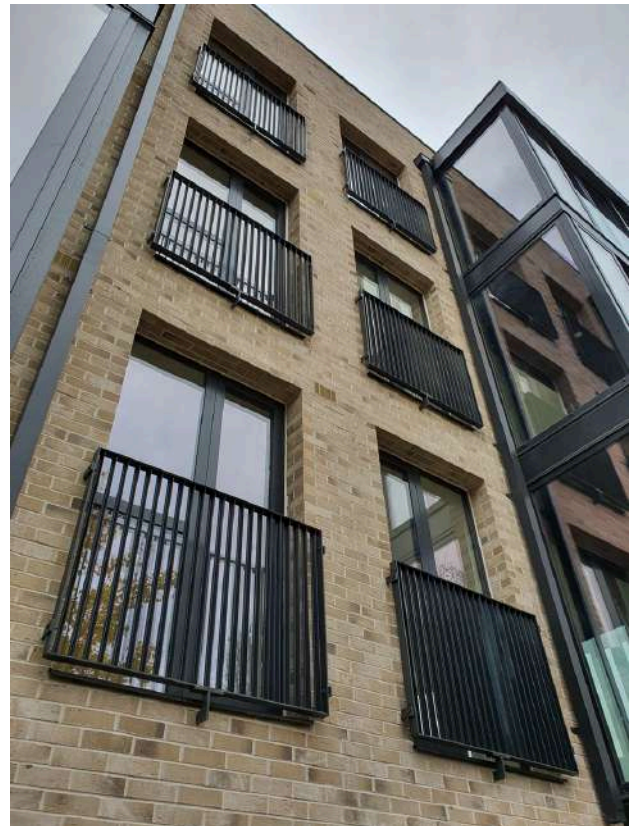


REDSTONE

View our full range of colours available in our Mineral Brick Slips brochure

Clay Brick Slips

Licata's clay brick slips are thin sections of brick that replicate the look of traditional brickwork. Ideal for new build and renovation projects, they are perfect for façade cladding whilst creating a beautiful aesthetic. Suitable for internal and external use, brick slips are cost effective and quick to apply. They provide excellent durability and low maintenance. Our clay brick slip range is available in a wide range of sizes, textures and colours.



ANTIQUE RED



RUSTIC SAND



TRUFFLE



STORM



PUMPKIN SPICE



BLACK SLATE



FROST



PAPAYA



AGED YELLOW



BURNT SIENNA



BRIE



CREST

View our full range of colours available in our Clay Brick Slips brochure

THE EAST LONDON HOTEL





Twickenham

Unit 6, Hampton Business Park
Bolney Way, Twickenham
TW13 6DB, United Kingdom

Tel: 020 8894 3372

Southgate

Unit 5 Brunswick Industrial Park
Southgate
N11 1JL, United Kingdom

Tel: 020 3987 0200

Dartford

Unit 4 Schooner Park
Schooner Court, Dartford
DA2 6NW, United Kingdom

Tel: 01322 927 600

Birmingham

Unit 17 Frankley Industrial Estate
Tay Road, Frankley
B45 0LD, Birmingham, United Kingdom

Tel: 0121 667 2412

Manchester

Unit 6C Stanley Green Trading Estate,
Cheadle Hulme
SK8 6RB

Tel: 0161 949 0035

NEW BUILD | REBUILD | RENOVATE

www.licataltd.co.uk