

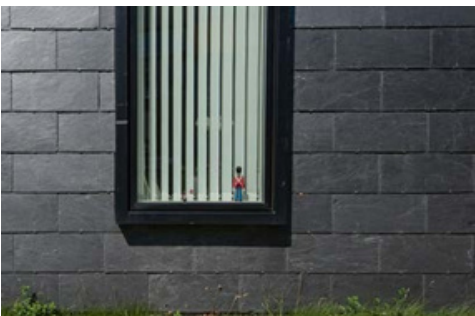


CUPACLAD

NATURAL SLATE RAINSCREEN CLADDING SYSTEMS

NEW BUILD | REBUILD | RENOVATE

www.licataltd.co.uk



Modern, contemporary design.



Lightweight and versatile.



Highly durable.



Maintenance free.



Quick and easy to install.



Environmentally friendly and sustainable.



Efficient as a rainscreen cladding.



Compatible with exterior insulation systems.

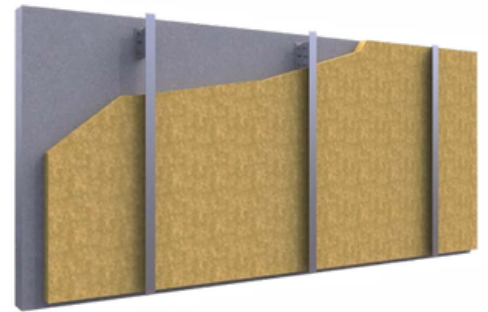


Secondary Support / Framing System

Produced by world leader in natural slate Cupa Pizarras. The CUPACLAD® BBA certified (18/5532) range of rainscreen support systems and lightweight framing components are the pinnacle of engineering excellence. Tailored to your CUPACLAD® project, we can cater to a broad spectrum of designs and architectural aspirations.



Using a solution-oriented approach that marries cost-efficiency with unparalleled flexibility, prioritising not only the reliability of mechanical fixing methodologies but also significant improvements in energy efficiency and environmental impact.



Ideal for visionary new builds or sophisticated refurbishments, our rainscreen support systems are designed to meet the evolving needs of modern architecture, ensuring structures that are aesthetically pleasing, thermally efficient, and built to endure with a lower carbon footprint.



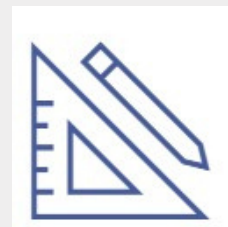
-BBA Certified



-Made in Britain



-Bespoke Design



TAILORED SOLUTIONS FOR EVERY PROJECT

Understanding that every project is unique, we offer customised solutions to meet the specific requirements of your architectural design. Our team of experts is committed to providing support throughout the planning and installation process, ensuring a seamless integration with your **CUPACLAD®** slate system.

WARRANTY AND SUPPORT

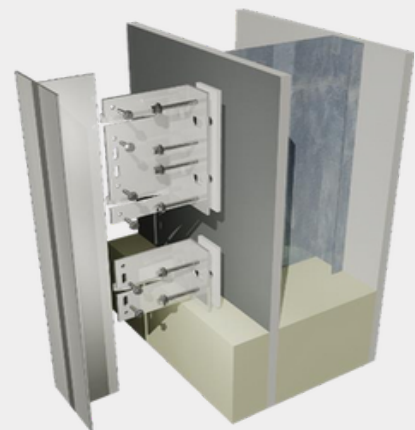
We stand behind the quality of our bespoke framing system with a comprehensive warranty, offering peace of mind and assurance of its longevity and performance. Our dedicated customer support team is always ready to assist with any enquiries or technical support needs.

FEATURES & BENEFITS:

- **Lightweight Design:** Minimise load on structures without compromising on stability.
- **Corrosion Resistance:** Crafted from high-grade aluminium, our framing is impervious to rust and corrosion, ensuring your façade stays pristine through all seasons.
- **Easy Installation:** Precision-engineered for a perfect fit with **CUPACLAD®** slates, our system simplifies installation, saving time and reducing labour costs.
- **Versatile Compatibility:** Whether it's a commercial high-rise or a residential dwelling, our framing system is designed to accommodate various architectural needs.
- **Eco-Friendly:** Made from recyclable materials, our aluminium framing supports sustainable construction practices, reducing the environmental footprint of your project.
- **Improved Thermal Performance:** When combined with appropriate insulation materials, our system contributes to energy efficiency, keeping interiors comfortable while reducing energy costs.

DCS031 HELPING HAND BRACKETS

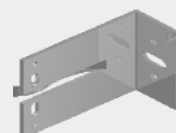
Single Bracket60
Double Bracket60
ThermoPad5mm Standard Pad S/A
Cavity Range94mm to 104mm



FIXINGS

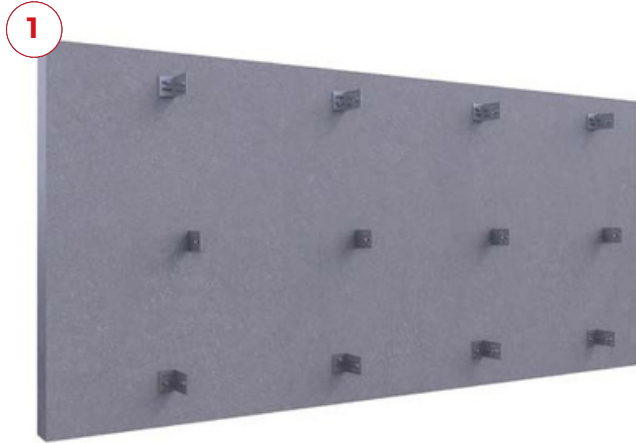


DCS031 HELPING HAND BRACKETS



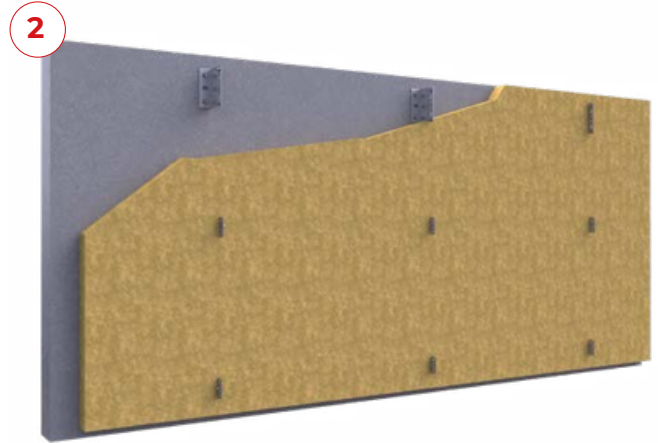
CUPACLAD® 101 SERIES

FASTENING METHOD



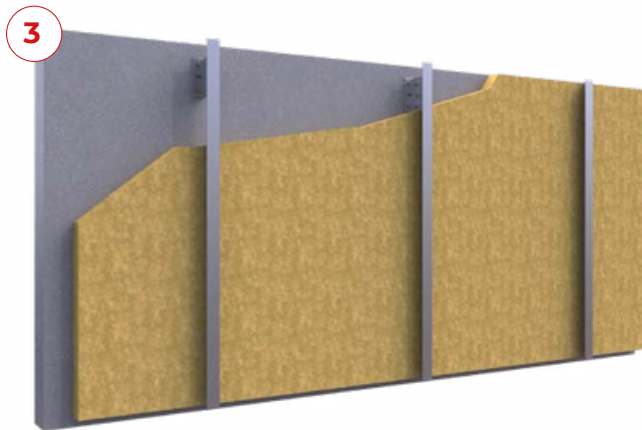
Fastening the metal brackets

The metal brackets are installed in alternate courses on each side of the vertical profile. It is required to use both fixed point metal brackets (on the upper end of each profile) and brackets with an sliding point to allow for expansion of the profile.



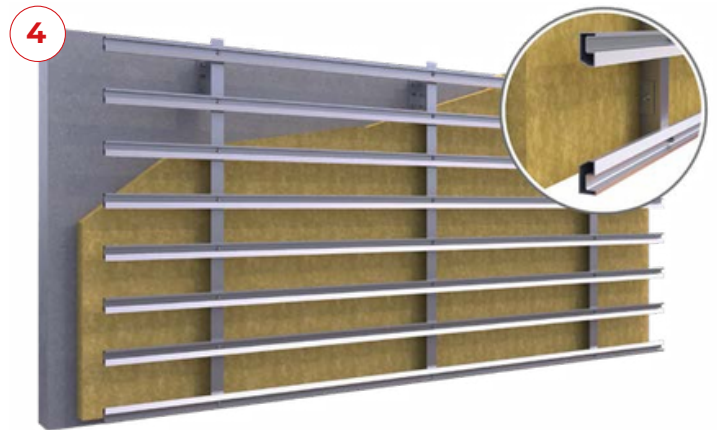
Installation of insulation

Choose the most suitable insulation material based on the project requirements. Install in accordance with the manufacturers recommendations.



Fasten the "L" shaped profiles

Fasten the vertical profiles to the metal brackets allowing at least 3/4 for an air cavity. The vertical profiles must be perfectly level before fitting the remainder of the system components.



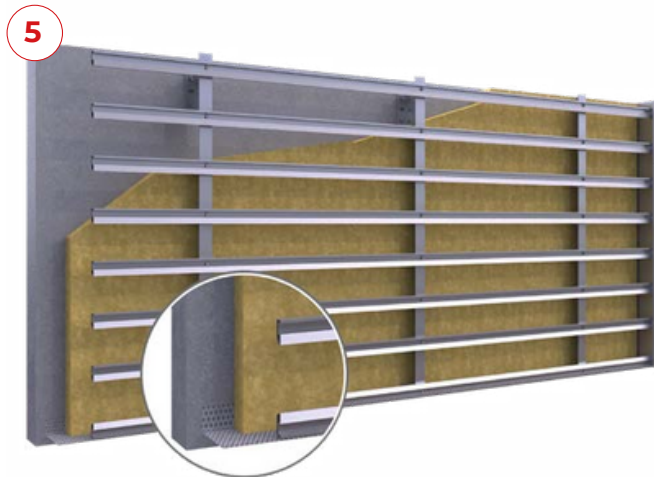
Installing the CUPACLAD® 101 horizontal profiles

Install the horizontal battens with the vertical ones at each intersection. The horizontal battens must be perfectly level as their position will dictate the final position of the slate. The bottom batten for the first course of slate must be inverted for proper installation.



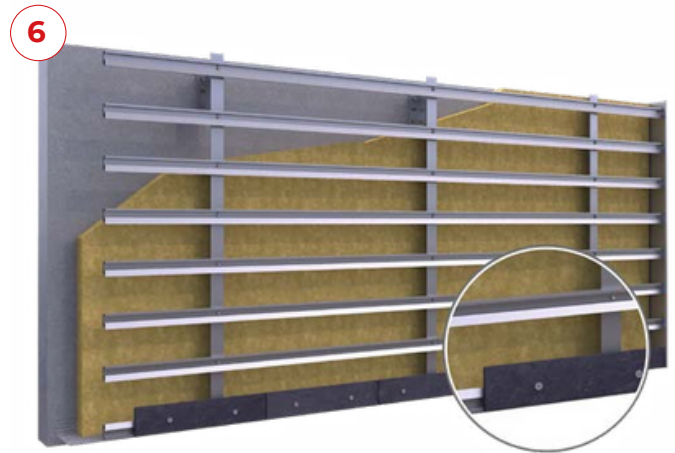
CUPACLAD® 101 SERIES

FASTENING METHOD



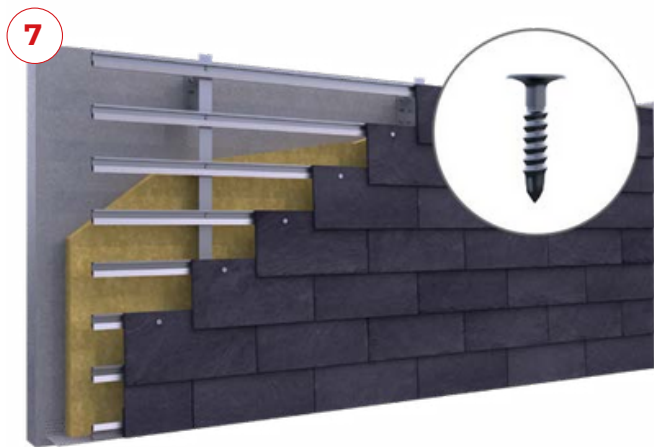
Installing the trim

Install a ventilation flashing at the first course of the cladding and the metal flashings at single points (edges, window frames, etc).



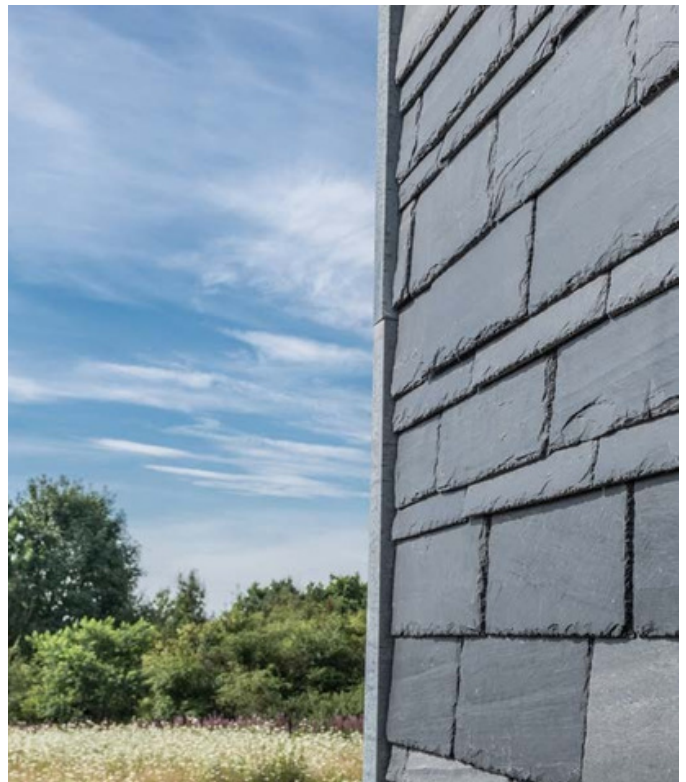
Installing the first course slate

Cut a slate to a height of 3 1/4" approx. Fasten it inverted matching the bottom edge of the slate with the first 101 horizontal batten.



Fastening the slates with the self-drilling CUPACLAD® 101 screw

Each slate must be aligned with the upper edge of the batten and fitted with two stainless steel, CUPACLAD® 101 self-drilling screws.



Licata Building Systems Ltd proudly stands as the UK's premier supplier of **External Wall Insulation** (EWI) systems, renowned for delivering exceptional quality products and systems. Our commitment to excellence is evident through our comprehensive technical and on-site project support, ensuring every client receives the highest level of service. At the heart of our mission is a steadfast dedication to environmentally responsible and sustainable building solutions. We consistently enhance our quality and system accreditations, setting new benchmarks in the industry. This dedication ensures that our clients always receive products and services that not only meet but exceed the highest standards of excellence and sustainability.



Manufacturing Excellence

LBS prioritises manufacturing excellence. Our process is dedicated to the selection of superior quality materials and adherence to the highest manufacturing standards. Our annual procurement assessment strategy ensures that our partners fulfil strict standards concerning product quality, responsible sourcing, environmental sustainability, and compliance. Suppliers who meet these stringent requirements are added to our supply chain database after comprehensive evaluation, guaranteeing the integrity and longevity of our products



Certification and Accreditation

LBS offers a comprehensive suite of products with BBA, BDA, and ETA certifications, aligning with the stringent requirements for construction projects in the UK and Europe. Each product is rigorously tested to meet European and British standards, verifying its durability, structural integrity, and performance. Licata's certified systems are confirmed to have a minimum lifespan of 25 years, with certain systems also achieving BRE Fire Certification, which extends their life expectancy to 60 years.



Technical Services

LBS provides an extensive array of technical services to facilitate project design and system installation. Our Technical Support Team is equipped to supply in-depth NBS Specifications, tailored CAD drawings, photographic overlays, thermal performance calculations including U-values, and assessments for condensation and humidity.



Training and Approved Applicators

We offer comprehensive training courses on all our systems to ensure installations adhere to the highest industry standards



Site Support, Testing, and Inspections

LBS provides unmatched site support for all projects, with a team of experts distributed strategically across the UK. Our services include pull-out tests, detailed product information, assistance with application processes and guidance on product detailing, all delivered by our expert site support team.



Sample Service

We also offer a complimentary sample service across our entire range of products and systems



OUR BRANCHES

CUPACLAD

+44 (0) 20 3318 4455
cupaclad@cupapizarras.com
www.cupaclad.com

Southgate

Unit 5 Brunswick Industrial Park
Southgate
N11 1JL, United Kingdom
Tel: 020 3987 0200

Twickenham

Unit 6, Hampton Business Park
Bolney Way, Twickenham
TW13 6DB, United Kingdom
Tel: 020 8894 3372

DISTRIBUTED BY:



Dartford

Unit 4 Schooner Park
Schooner Court, Dartford
DA2 6NW, United Kingdom
Tel: 01322 927 600

Birmingham

Unit 17 Frankley Industrial Estate
Tay Road, Frankley
B45 0LD, Birmingham,
United Kingdom