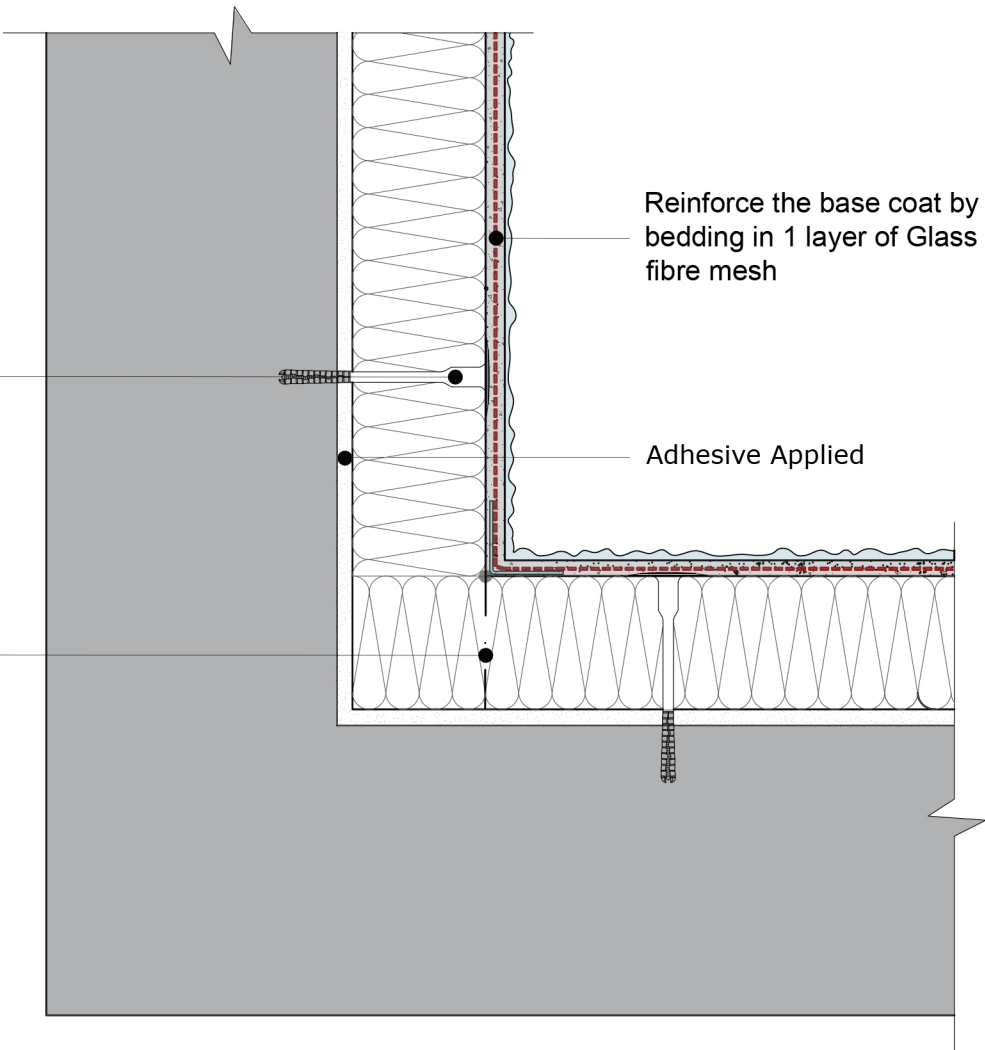


Fixings type and size to be referred to in project specific specification for thickness of insulation and embedment depth

Boards to be installed in a staggered pattern to corners



INTERNAL CORNER

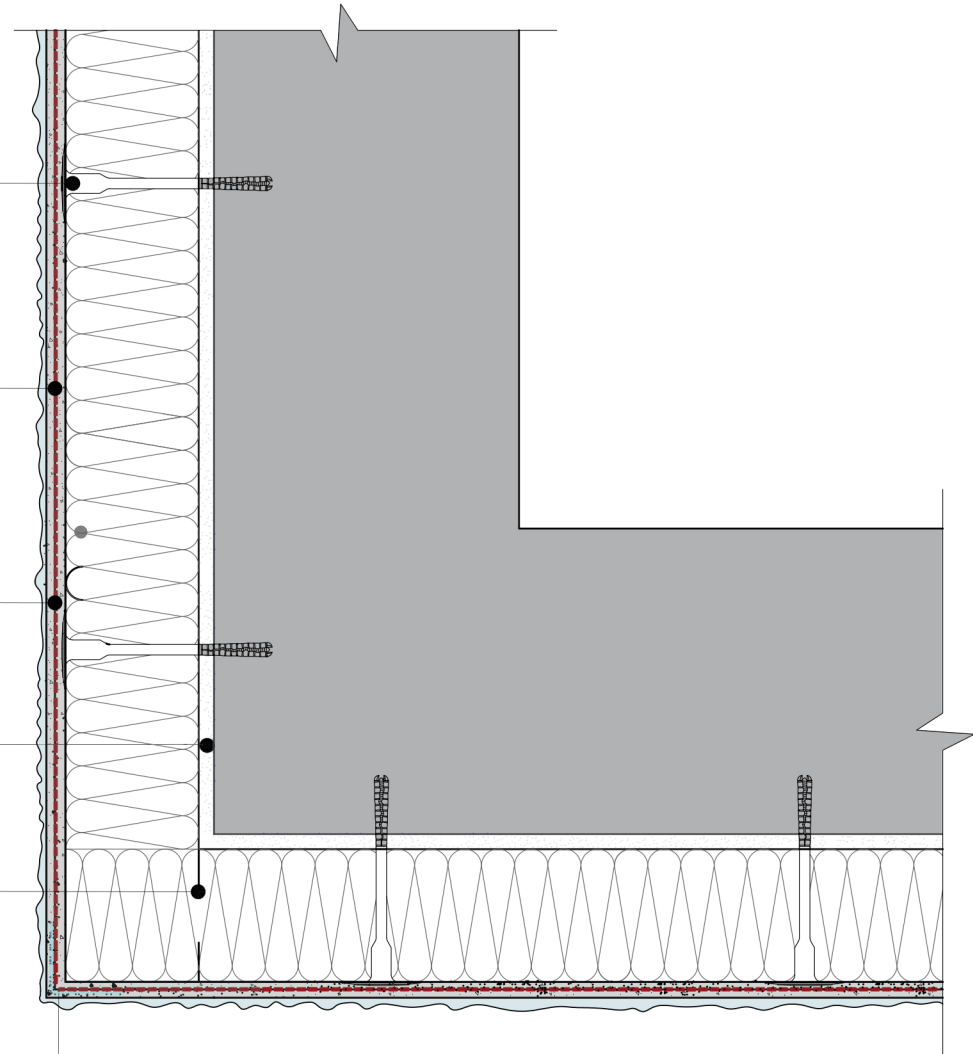
Fixings type and size to be referred to in project specific specification for thickness of insulation and embedment depth

Render and finish over Insulation (refer to project specific specification)

Reinforce the base coat by bedding in 1 layer of Glass fibre mesh

Adhesive Applied

Boards to be installed in a staggered pattern to corners



upvc corner bead lapped with glass fibre mesh TEP707-Insul-Sil E system

EXTERNAL CORNER

Date: 19th July 2021	Detail Ref:	<div>Licata Building Systems</div> <div>Unit 6 Hampton Business Park, Bolney Way, Twickenham TW13 6DB</div>
Drawn by: MD	LBS - EWI SW - Internal Corner & External corner Detail	
Checked by: RH	Title:	
Scale : NTS	Internal & External corner Detail	