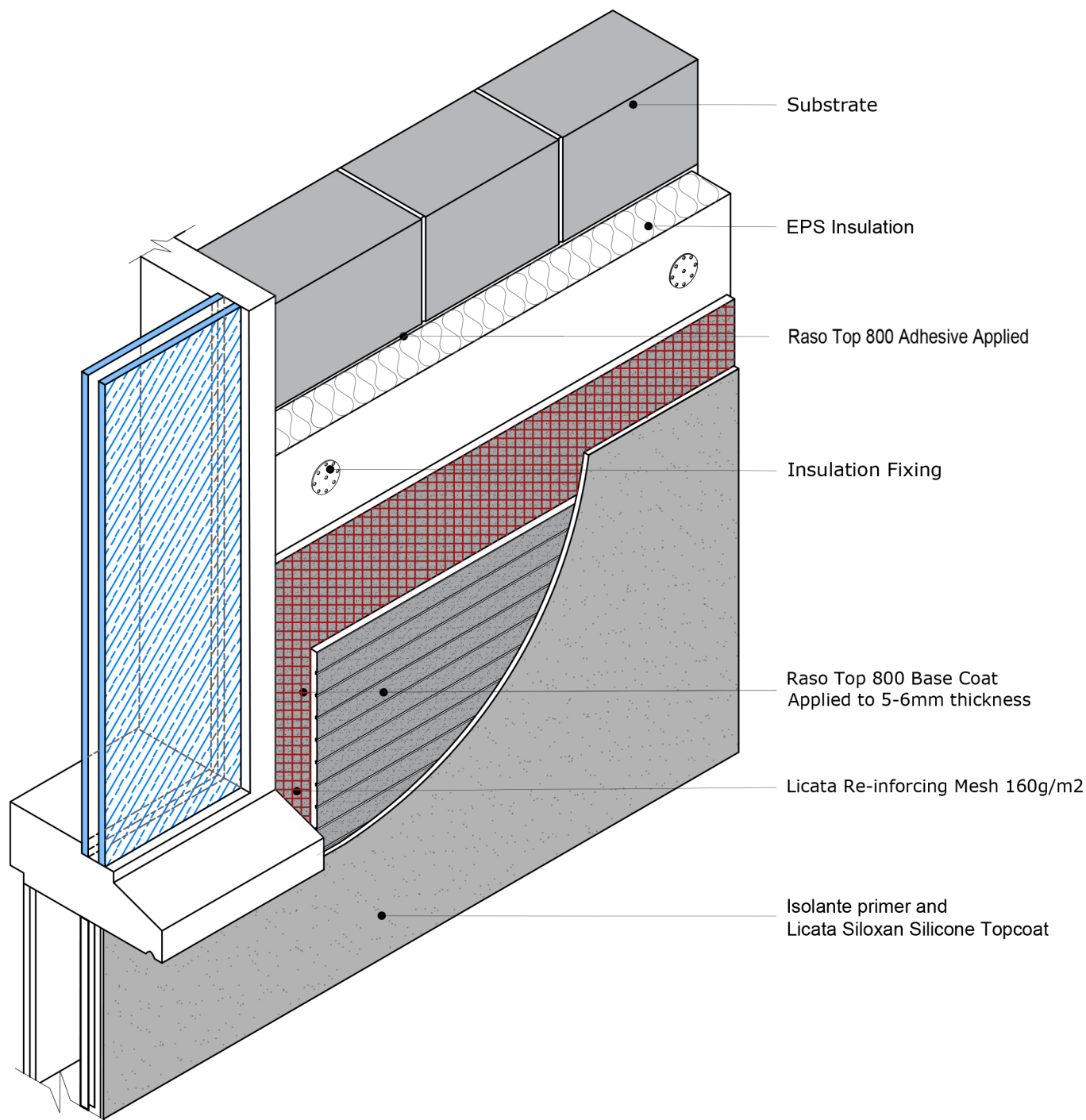


Note: All fixings must be Licata approved and supplied and an allowance for a minimum of 40mm embedment into the substrate, the number of fixings is determined by the specification, location and building height in relation to the wind load and pull through calculations.



Date: 05th October 2021	Detail Ref: LBS Render on Blocks - EWI - EPS - Iso 001	Licata Building Systems Unit 6 Hampton Business Park, Bolney Way, Twickenham TW13 6DB
Drawn by: MD	Title: Isometric Std Drawing Brick Slips	
Checked by: RH		
Scale : NTS		