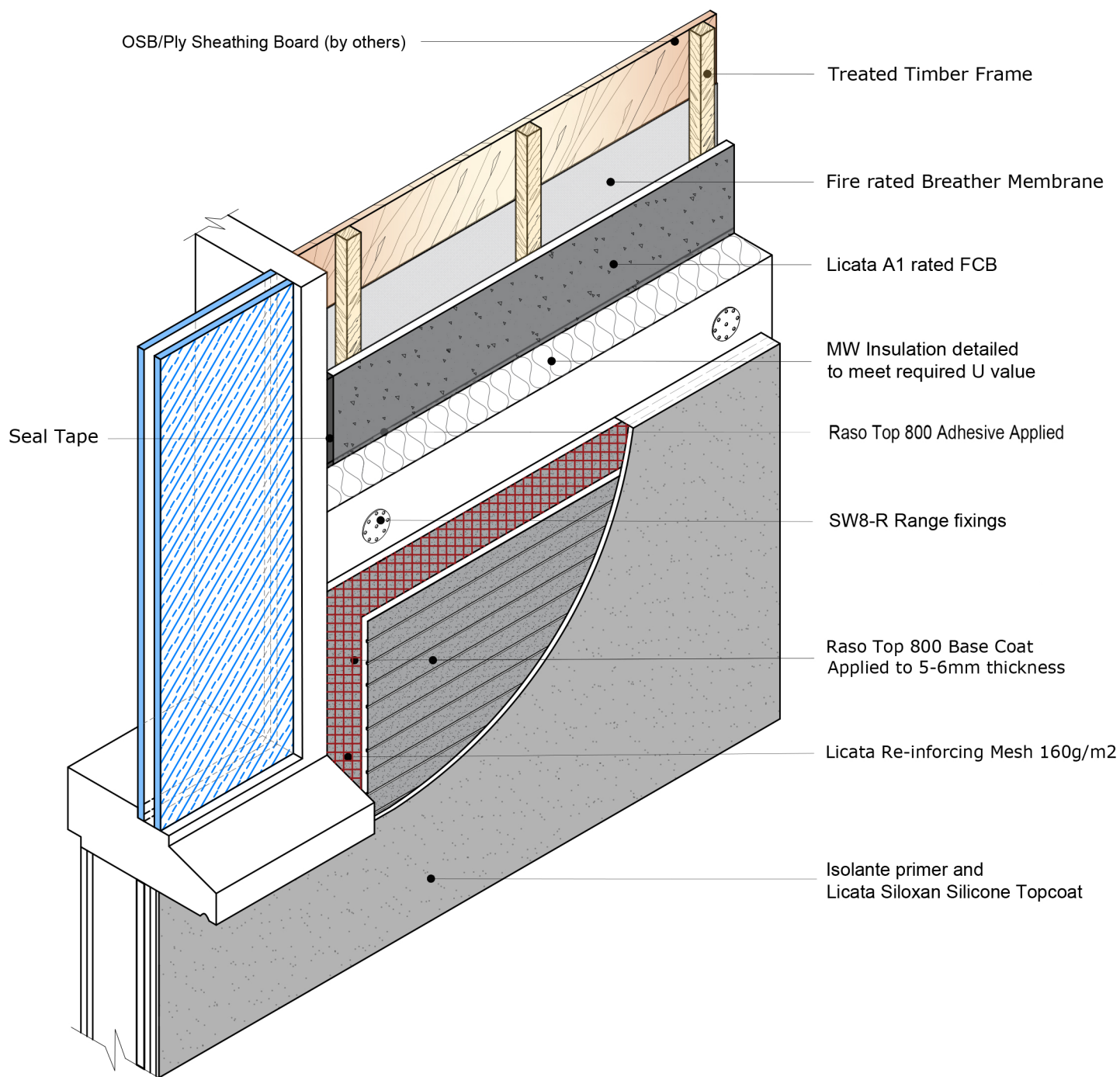


Note: All fixings must be Licata approved and supplied and an allowance for a minimum of 40mm embedment into the substrate, the number of fixings is determined by the specification, location and building height in relation to the wind load and pull through calculations.



Date: 19th July 2021	Detail Ref:	<div>LBS Render on TF - EWI - Iso 001</div> <div>Licata Building Systems</div> <div>Unit 6 Hampton Business Park, Bolney Way, Twickenham TW13 6DB</div>
Drawn by: MD	<div>Title:</div> <div>Isometric Std Drawing Render</div>	
Checked by: RH		
Scale : NTS		