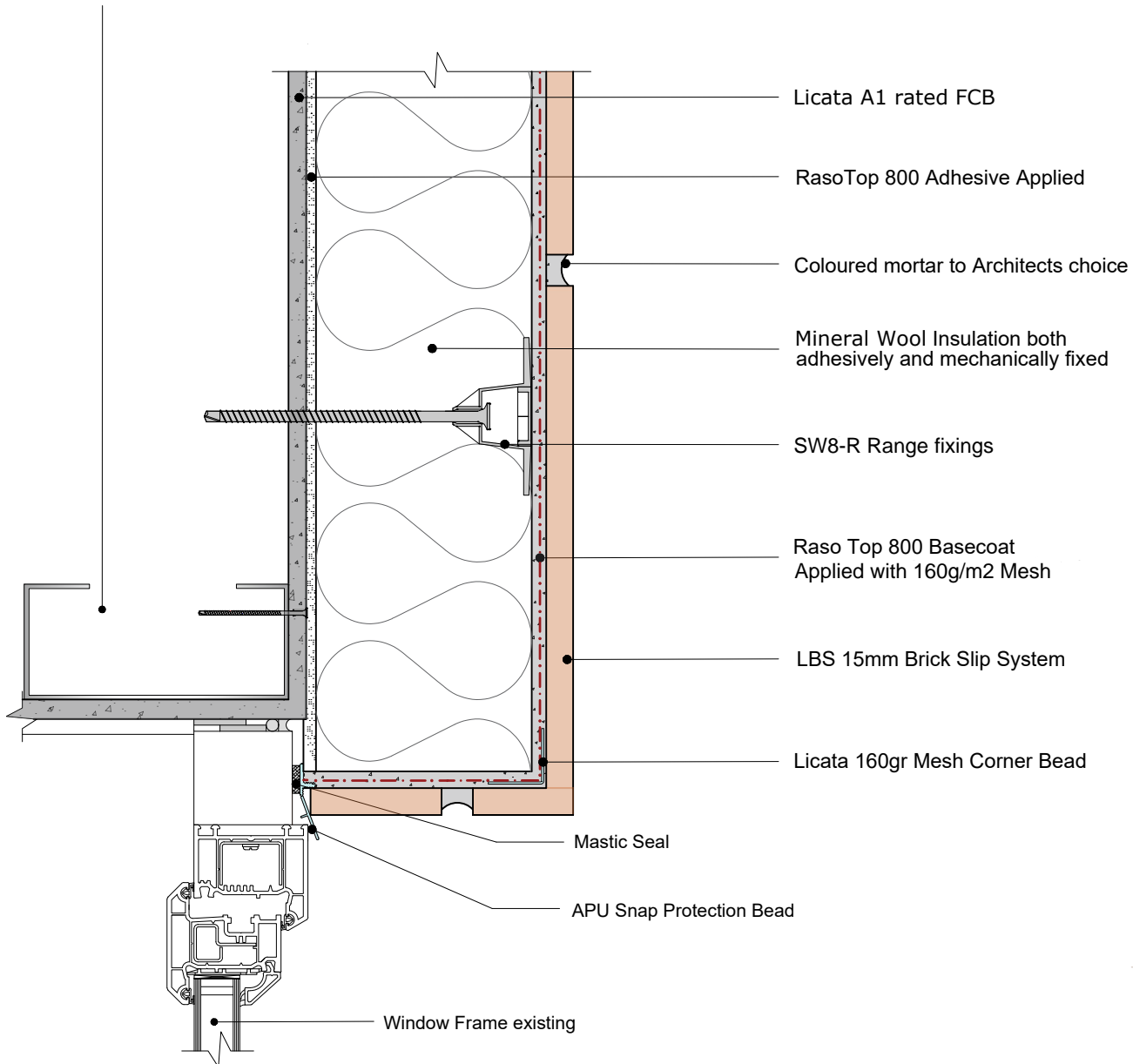


Note: All fixings must be Licata approved and supplied and an allowance for a minimum of 40mm embedment into the substrate, the number of fixings is determined by the specification, location and building height in relation to the wind load and pull through calculations.

Note (a U channel may be required above the window head to deflect the possibility of any moisture into the cavity)

SFS fully filled with MW Insulation



Date: 19th July 2021	Detail Ref: LBS 15mm BS on SFS &12mm CFB-EWI-WH 006	Licata Building Systems Unit 6 Hampton Business Park, Bolney Way, Twickenham TW13 6DB
Drawn by: MD	Title: Std Window Head Detail	
Checked by: RH		
Scale : NTS		