

Render Systems



licata[®] building systems
... since 1981





INNOVATION
RESEARCH
DEVELOPMENT

Solutions for every need.





INNOVATION AND SPECIALISATION

The construction division of Licata Building Systems works successfully in the sphere of infrastructure.





INTERNATIONALISATION





Licata Render Only Systems

monocouche render system	pg 10
new block work render system	pg 13
existing render/paint render system	pg 16
thermalite block render system	pg 19
panel substrate render system	pg 22
anti-acrack render system	pg 25
plaster render system	pg 28

Licata System Finishes

top coat renders	pg 31
multi colour	pg 32
acrylic brick slips	pg 33
clay brick slips	pg 34

Monocouche Render System

10

Licata Building Systems **Scratch Render** is a one coat pre-mixed render. UV resistant and has waterproof natural additives.

Scratch Render is ideally suited to create a rustic or stone effect and is designed for application at a thickness of typically 12 mm, before being scraped back using a nail float to achieve a thickness of approximately 10 mm.

It is a product with high reliability in terms of duration and is particularly appreciated for its aesthetic beauty. The water repellent surface reduces water absorption and improves resistance to algae growth and requires very little maintenance.

Maintenance

If staining occurs to the render this can easily be cleaned by using suitable cleaning detergent and a warm power washer. Care must be taken to ensure the pressure of the water is right so no surface damage is caused to the render in the cleaning process. A fungicidal wash can be beneficial to help prevent the growth of algae especially on facades that take the brunt of the weather, which can be prone to algae growth due to prolonged periods of wetness. We are also compatible with a range of anti-graffiti treatments.

Packaging

- + Supplied in 25kg bags as a dry powder pre-mix, requiring mixing with clean water.
- + Minimum thickness of 10mm (16kg/m²)

Area of Application

- + Suitable for brickwork, blocks, concrete substrates, painted surface
- + Lightweight and flexible
- + Suitable for new builds and refurbishments, where the substrate is good and level.

Features & Benefits

- + One coat for fast application and short program periods
- + Available 16 standard colours.
- + Factory produced for consistency of proportioning
- + Good vapour permeability
- + Ready mixed - only water required to be added on site for ease of use
- + Can be applied by hand or by spray machine.

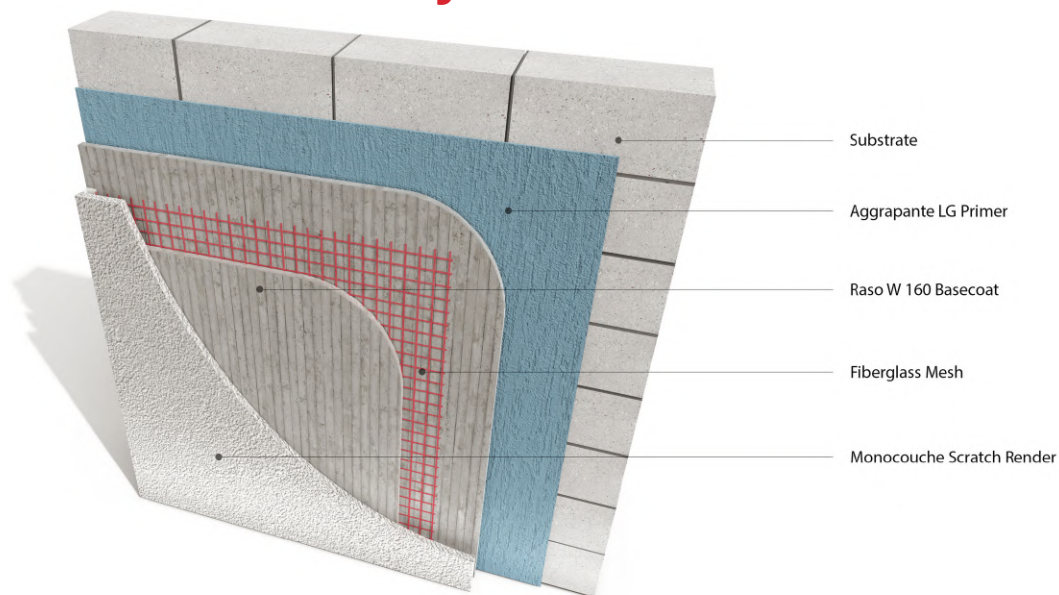
Method of Application

Applied by hand trowel at an approximate rate of 16kg per square metre, (minimum 10mm) onto a dry Scratch Render Base Coat. This is left until it has achieved partial setting (between 5 to 16 hours) and is then scraped back to a finished thickness of approximately 10mm using a nail float. Once scraped back, the surface should be thoroughly brushed down with a medium soft brush to remove any loose deposits.

Application / Drying Conditions

Temperature (material, substrate, water and ambient air during application & drying): +5°C to approx. +30°C. The material should not be applied in direct sunlight, during strong wind, fog, high relative humidity, and imminent rain or frost. Drying conditions will vary according to wind, temperature and humidity. Protection from rain and frost should be provided for the first 48 hours after application and until the render has fully cured.

Monocouche Render System



Aggrapante LG Primer

Universal pigmented primer, ready to use, specific as a bonding bridge for cycles of plastering, on smooth and absorbent surfaces.

Raso W160 Base Coat

Fibre-reinforced adhesive-skim coat, polymer-modified, for indoor and outdoor use, based on hydraulic binders.



Fibreglass Mesh

Licata Fibreglass Mesh 160 - fibreglass alkali-resistant mesh meets the highest non-tear and impact resistance standards.

Licata Coloured Monocouche

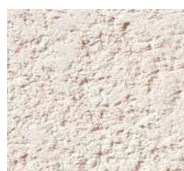
Fibre-reinforced adhesive-skim coat, polymer-modified, for indoor and outdoor use, based on hydraulic binders.



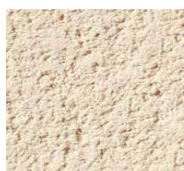
Due to the printing process the below colour samples may show a slight difference compared to the actual product colour. Please view actual product prior to making a colour choice.



bianco



pietra ligure



urbino



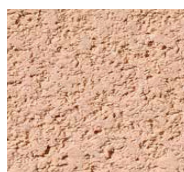
roma



caserta



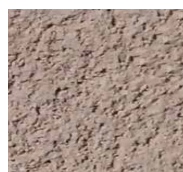
pisa



tivoli



porto azzurro



montova



agrigento

Monocouche Render System Completed Project

12



New Block Work Render System

13

Licata's New Block Work Render System is a versatile façade solutions, which can be installed with ease. Featuring a water repellent surface that protects against algae and mould, with the added benefit of excellent drying time. With increased strength and crack resistance, due to the glass fibre mesh. Choose from brick slips, coloured render or resin multi-colour for the decorative finish. With over 700 colours available, you can pick the perfect coloured render for your project.

Area of Application

- + Suitable for brickwork, blocks, and concrete substrates
- + Lightweight and flexible
- + Suitable for new builds and refurbishments, where the substrate is good & level

Features & Benefits

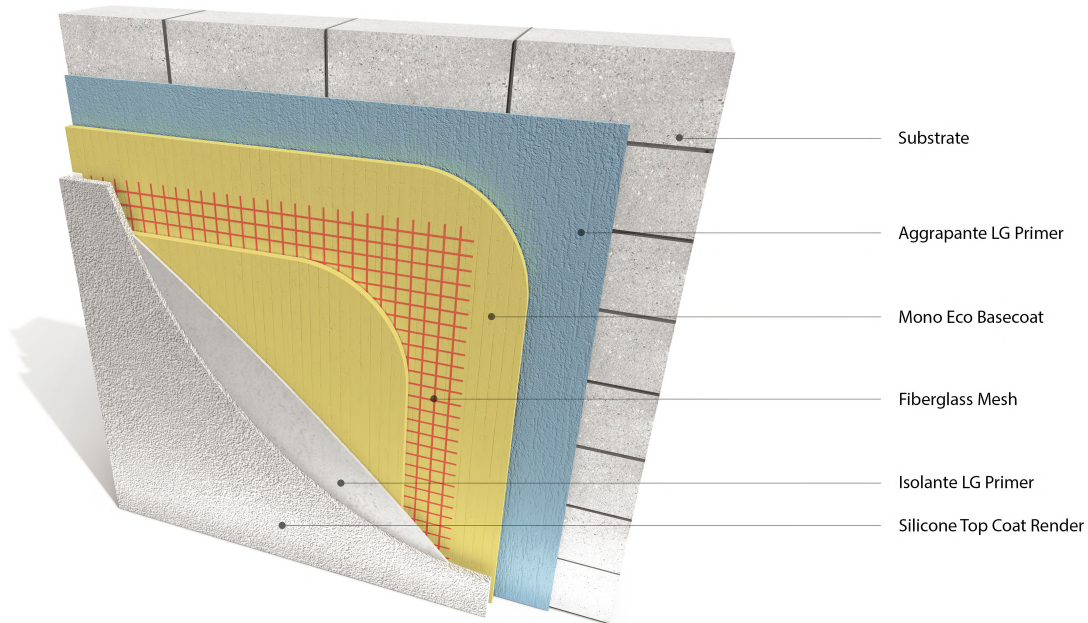
- + Economic render system
- + Factory batched leveller
- + Disperison content gives extra adhesion over sand and cement Weather-proof and vapour permeable
- + Available in a range of colours to suit every building
- + Grain size 0.7mm up tp 2.5mm

Method of Application

- + Levelling uneven substrates
- + Block work should be constructed to fair - face tolerances
- + Ready to use components
- + Expansion joints must be used on the correct intervals for the construction type and take through the render system
- + A primer coat may not be required, to ensure correct products are used to create and receive the render system please contact us

New Block Work Render System

14



Aggrapante LG Primer

Universal pigmented primer, ready to use, specific as a bonding bridge for cycles of plastering, on smooth and absorbent surfaces.

MonoEco Lime Base Coat

White fibre-reinforced backing plaster, with a base of natural hydrated lime, hydraulic binder and natural additives.



Fibreglass Mesh

Licata Fibreglass Mesh 160 - fibreglass alkali-resistant mesh meets the highest non-tear and impact resistance standards.

Isolante LG Primer

Universal pigmentable primer based on acrylic and inert copolymers of siliceous nature, for external use, with high coating strength and excellent smoothing properties



Silicone Top Coat Render

Paste coating based on siloxane binder, ready to use with high water-repellent and excellent vapour permeability, certified according to ETICS standards. Boasting excellent anti-mould and anti-algae properties. To be used as a decorative finish in **Licata Render Systems** and in all cycles where a high water vapour permeability is required.

New Block Work Render System Completed Project

15



New Block Work Render System



COLOUR
collection
Exterior

licata
building systems

Licata's Existing Render/Paint Render System has been designed for substrates that have already had render applied previously. Breathable with great adhesion and spreadability. With increased strength and crack resistance, due to the glass fibre mesh. Choose from brick slips, coloured render or resin multi-colour for the decorative finish. With over 700 colours available, you can pick the perfect coloured render for your project

Area of Application

- + Suitable for application onto existing rendered or painted surfaces.

Method of Application

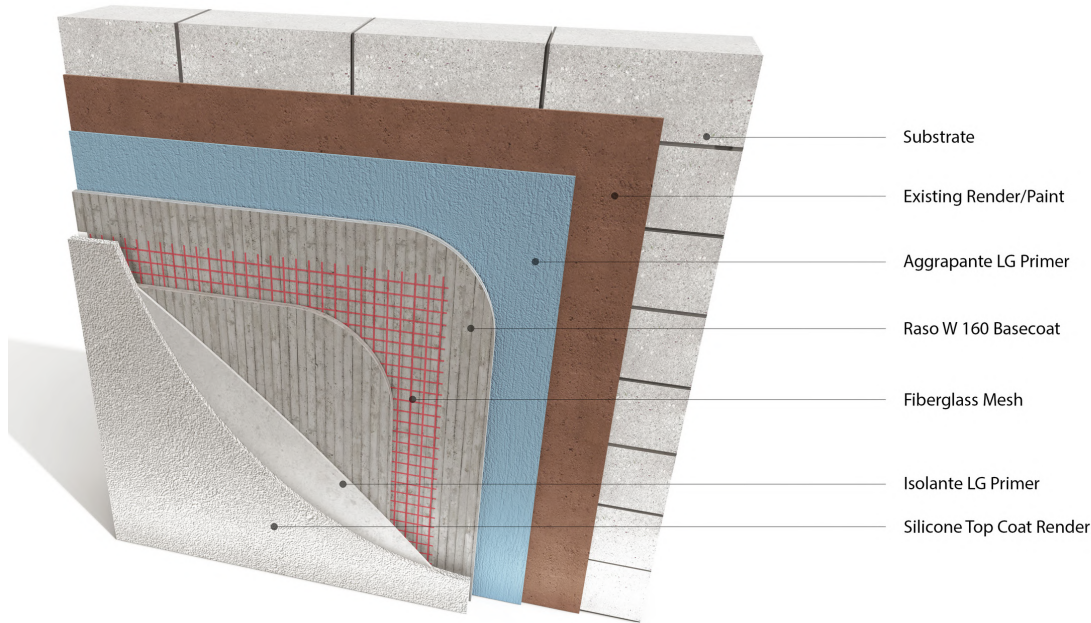
- + Levelling uneven substrates
- + Block work should be constructed to fair - face tolerances
- + Ready to use components
- + Expansion joints must be used on the correct intervals for the construction type and take through the render system
- + A primer coat may not be required, to ensure correct products are used to create and receive the render system please contact us

Features & Benefits

- + High water repellency
- + Good water vapour permeability
- + Protects against mould and algae
- + Available in wide range of colours and grain sizes (0.7mm - 2.5mm)

Existing Render/Paint Render System

17



Aggrapante LG Primer

Universal pigmented primer, ready to use, specific as a bonding bridge for cycles of plastering, on smooth and absorbent surfaces.

Raso W160 Base Coat

Fibre-reinforced adhesive-skim coat, polymer-modified, for indoor and outdoor use, based on hydraulic binders.



Fibreglass Mesh

Licata Fibreglass Mesh 160 - fibreglass alkali-resistant mesh meets the highest non-tear and impact resistance standards.

Isolante LG Primer

Universal pigmentable primer based on acrylic and inert copolymers of siliceous nature, for external use, with high coating strength and excellent smoothing properties



Silicone Top Coat Render

Paste coating based on siloxane binder, ready to use with high water-repellent and excellent vapour permeability, certified according to ETICS standards. Boasting excellent anti-mould and anti-algae properties. To be used as a decorative finish in **Licata Render Systems** and in all cycles where a high water vapour permeability is required.



Existing Render/Paint Render System Completed Project

18



Existing Render/Paint Render System



COLOUR
collection
Exterior

licata
building systems

Licata's Thermalite Block Render System has been designed for substrates built with thermalite blocks. Featuring weather resistance and anti-algae and mould properties. With increased strength and crack resistance, due to the glass fibre mesh. Choose from brick slips, coloured render or resin multi-colour for the decorative finish. With over 700 colours available, you can pick the perfect coloured render for your project.

Area of Application

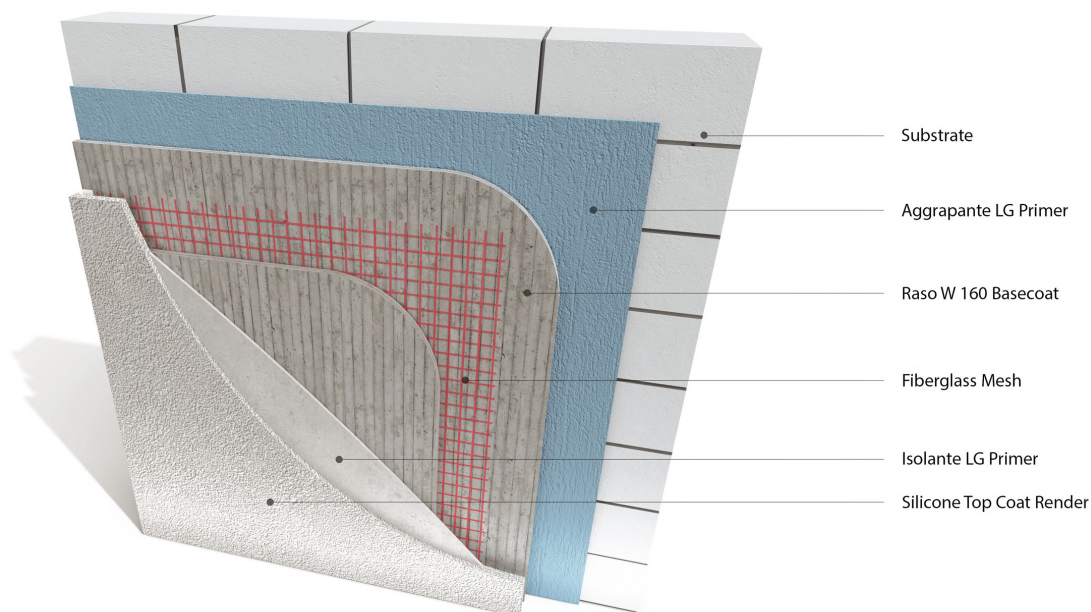
- + Suitable for application onto thermalite concrete blocks

Method of Application

- + Levelling uneven substrates
- + Block work should be constructed to fair - face tolerances
- + Ready to use components
- + Expansion joints must be used on the correct intervals for the construction type and take through the render system
- + A primer coat may not be required, to ensure correct products are used to create and receive the render system please contact us

Features & Benefits

- + High water repellency
- + Good water vapour permeability
- + Protects against mould and algae
- + Available in wide range of colours and grain sizes (0.7mm - 2.5mm)



Aggrapante LG Primer

Universal pigmented primer, ready to use, specific as a bonding bridge for cycles of plastering, on smooth and absorbent surfaces.

Raso W160 Base Coat

Fibre-reinforced adhesive-skim coat, polymer-modified, for indoor and outdoor use, based on hydraulic binders.



Fibreglass Mesh

Licata Fibreglass Mesh 160 - fibreglass alkali-resistant mesh meets the highest non-tear and impact resistance standards.

Isolante LG Primer

Universal pigmentable primer based on acrylic and inert copolymers of siliceous nature, for external use, with high coating strength and excellent smoothing properties



Silicone Top Coat Render

Paste coating based on siloxane binder, ready to use with high water-repellent and excellent vapour permeability, certified according to ETICS standards. Boasting excellent anti-mould and anti-algae properties. To be used as a decorative finish in **Licata Render Systems** and in all cycles where a high water vapour permeability is required.

Thermalite Block Render System Completed Project

21



Licata PSS (Panel Substrate System) is a system designed to produce a textured finish on a wide range of render substrate board.

With all the new building methods in the construction industry builders and developers are always looking for faster cheaper energy efficient methods of building and this is why more and more projects are utilising timber and light weight steel frame systems which enable the exterior facade to be dosed off sooner and allow many different aesthetic finishes.

This makes thin coat renders perfect for such applications, providing excellent water resistant finishes to a large range of substrates, including new and old brickwork/blockwork, concrete, steel and timber framed buildings, when used in conjunction with a suitable render carrier boards.

The render substrate board surface is protected with 6mm thick glassfibre mesh cloth, reinforced coat of Raso Top 800 and a coat of one of Licata Building Systems renders.

Features

+ Suitable For Steel & Timber Frames –

The Licata substrate render board system is compatible with steel and timber substrates and will work equally well with either one. You can expect decades of reliable performance, energy savings and enhanced kerb appeal whether you choose a steel frame or timber frame foundation.

+ **Over 700 Colour Options** – people are sometimes reluctant to embrace these types of panel substrate render system external applications believing they have no control over the look of the finished product. Nothing could be further from the truth. The topcoat can be worked to produce a variety of textures and you have your choice of more than 700 colour options.

+ **Weather Resistant** – kerb appeal is all very well and good, but if this type of panel substrate render system is not capable of standing up to the extreme weathering forces it will encounter then it isn't worth much. Not to worry. When it comes to render manufacturers Licata is unmatched in producing world-class external render carrier board systems that stand resolute in the face of nature's relentless onslaught.

+ **Protects Against Algae & Mould** – with external render board systems, there is concern it could play host to algae and mould. If true this would undermine the attractiveness of the render finishes and pose a potential health hazard. Fortunately, the Licata panel substrate render system is algae and mould resistant. Enjoy long term peace of mind knowing this type of render system will retain its looks and never pose a health risk.

+ **Excellent Drying Time** – Licata external silicone render finishes are quick drying which provides maximum flexibility when it comes to choosing an application time. Simply choose an application window when rain and frost is not anticipated for several days.

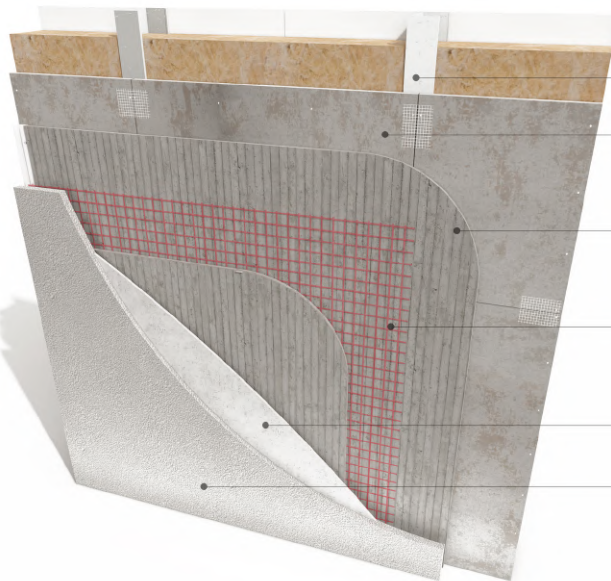
Breathable & Lightweight – our panel substrate render system seals your home against the elements and produces a significant bump in energy efficiency. It's also highly breathable to prevent moisture from undermining the efficacy of the system, and lightweight so as not to put undue stress on external walls.

+ **Durable & Water Repellent** – a Licata panel substrate render system is not a stop-gap measure to be used until something better comes along. It is a long term solution that is both durable and water repellent. This high strength render board system is dimensionally stable and demonstrates a high degree of impact resistance.

+ **Great Adhesion & Spreadability** – the primer, base coats and topcoat silicone render all exhibit first-class adhesion and spreadability. When combined with outstanding drying times and the multitude of potential colour options they are a common-sense choice for home and business.

Panel Substrate Render System

23



SFS fully filled with MW Insulation by others

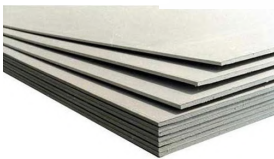
Licata A1 rated FCB

Raso Top 800 Adhesive/Basecoat

Fiberglass Mesh

Isolante LG Primer

Silicone Top Coat Render



A1 Fibre Cement Board

Licata multipurpose cement board is made using revolutionary HSPC technology. This unique technology makes these boards totally moisture, termite and fire resistant.

Aggrapante LG Primer

Universal pigmented primer, ready to use, specific as a bonding bridge for cycles of plastering, on smooth and absorbent surfaces.



Raso Top 800 Base Coat

Fibre-reinforced adhesive/skim coat, polymer modified, for indoor and outdoor use, based on hydraulic binders.

Fibreglass Mesh

Licata Fibreglass Mesh 160 - fibreglass alkali-resistant mesh meets the highest non-tear and impact resistance standards.



Isolante LG Primer

Universal pigmentable primer based on acrylic and inert copolymers of siliceous nature, for external use, with high coating strength and excellent smoothing properties

Silicone Top Coat Render

Paste coating based on siloxane binder, ready to use with high water-repellent and excellent vapour permeability, certified according to ETICS standards. Boasting excellent anti-mould and anti-algae properties. To be used as a decorative finish in **Licata Render Systems** and in all cycles where a high water vapour permeability is required..



Panel Substrate Render System Completed Project

24



Panel Substrate Render System



COLOUR
collection
Exterior

licata[®]
building systems

Licata's Anti-Crack Render System is perfect for unstable substrates. The combination of our Rasotherm 500 Plus and glass fibre mesh provides ultimate crack resistance. Featuring a water repellent surface that protects against algae and mould, with the added benefit of excellent drying time. Our Elasto Render has over 700 colours available, so you can pick the perfect coloured render for your project.

Area of Application

- + Suitable for brick work, blocks, concrete substrates
- + Lightweight and flexible
- + Incorporates light weight reinforcement for additional system durability
- + Suitable for new builds and refurbishments, where the substrate is good and level

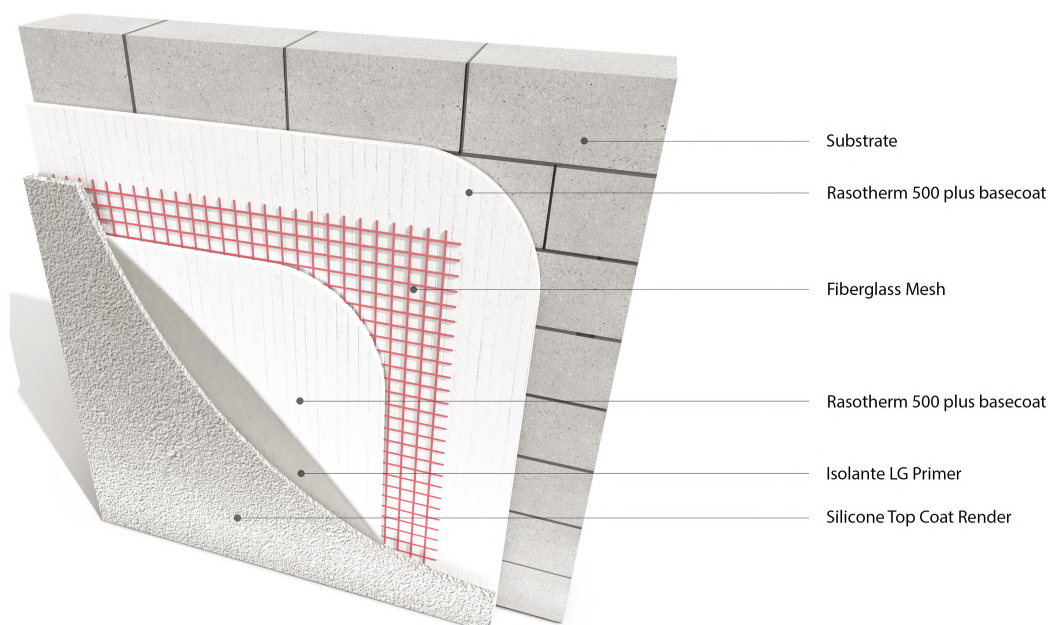
Area of Application

- + Factory batched leveller
- + MonoEco levelling coat to overcome uneven substrates
- + Available in a range of colours to suit every building
- + Grain size 0.7mm up to 3.1mm
- + Rasotherm 500 Plus reinforcing with fibreglass mesh to give the ultimate crack resistance over conventional renders
- + Weather proof and vapour permeable

Method of Application

- + Levelling uneven substrates
- + Block work should be constructed to fair - face tolerances
- + Ready to use components
- + Expansion joints must be used at the correct intervals for the construction type and taken through the render system
- + A primer coat may not be required, to ensure correct products are used to create and receive the render system please contact us

Anti-Crack Render System



Aggrapante LG Primer

Universal pigmented primer, ready to use, specific as a bonding bridge for cycles of plastering, on smooth and absorbent surfaces.

Rasotherm 500 Plus

Adhesive/skimming putty plaster, ready to use, based on selected synthetic polymers in water dispersion.



Fibreglass Mesh

Licata Fibreglass Mesh 160 - fibreglass alkali-resistant mesh meets the highest non-tear and impact resistance standards.

Isolante LG Primer

Universal pigmentable primer based on acrylic and inert copolymers of siliceous nature, for external use, with high coating strength and excellent smoothing properties.



Silicone Top Coat Render

Paste coating based on siloxane binder, ready to use with high water-repellent and excellent vapour permeability, certified according to ETICS standards. Boasting excellent anti-mould and anti-algae properties. To be used as a decorative finish in **Licata Render Systems** and in all cycles where a high water vapour permeability is required..

Anti-Crack Render System Completed Project

27



Anti-Crack Render System



COLOUR
collection
Exterior

licata[®]
building systems

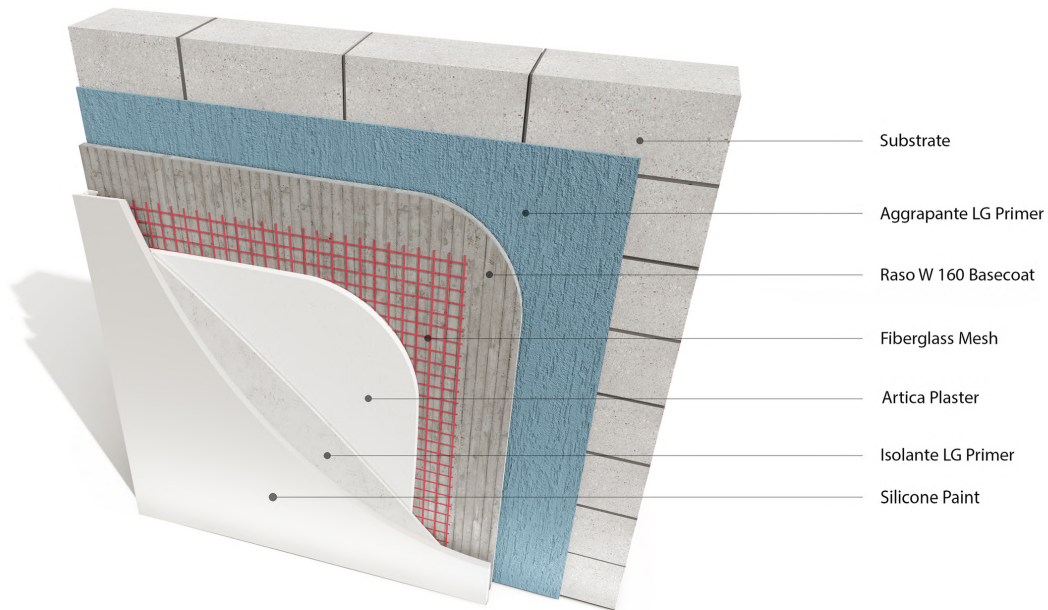
Licata's Plaster Render System is a versatile façade solutions, which can be used on any substrate. Featuring a water repellent surface that protects against algae and mould, with the added benefit of excellent drying time. Durable and weather resistant with excellent adhesion and spreadability. With over 700 colours available, you can pick the perfect coloured render for your project.

Area of Application

- + Suitable for brick work, blocks, concrete substrates
- + Lightweight and flexible
- + Incorporates light weight reinforcement for additional system durability
- + Suitable for new builds and refurbishments, where the substrate is good and level

Features & Benefits

- + High mechanical strength and surface resistance
 - the high-strength hydraulic binders and selected inert fillers with a controlled constant grading curve offer high mechanical strength and surface resistance.
- + Applicable from 0 to 3 mm
 - the dimensional stability, guaranteed by hygrometric shrinkage close to zero, allows application in thicknesses ranging between 0 and 3 mm in a single coat.
- + Easy workability
 - The use of special additives and selected inert materials containing micronized marble powder give excellent fluidity and ease of processing, reducing the difficulty of installation to a minimum.
- + Extended pot-life
 - Licata research and development has dedicated specific studies to the extended pot-life (about 3 hours), an added value that allows to easily retouch the product during the application.
- + High adhesion strength
 - Artica adheres without the aid of adhesion promoters on most of the substrates used in the construction industry.
- + Grading curve < 200 micron
 - this characteristic makes Artica ideal as a levelling skimming before decoration with mirror finish mortars, paints and coatings, whether mineral or synthetic.



Aggrapante LG Primer

Universal pigmented primer, ready to use, specific as a bonding bridge for cycles of plastering, on smooth and absorbent surfaces.

Raso W160 Base Coat

Fibre-reinforced adhesive-skim coat, polymer-modified, for indoor and outdoor use, based on hydraulic binders.



Artica

Artica is a cement straightening skim plaster for both indoor and outdoor use, based on white cement, pure selected marble micronised powder aggregates and specific natural additives.

Isolante LG Primer

Universal pigmentable primer based on acrylic and inert copolymers of siliceous nature, for external use, with high coating strength and excellent smoothing properties



Silicone Top Coat Render

Paste coating based on siloxane binder, ready to use with high water-repellent and excellent vapour permeability, certified according to ETICS standards. Boasting excellent anti-mould and anti-algae properties. To be used as a decorative finish in **Licata Render Systems** and in all cycles where a high water vapour permeability is required.

Plaster Render System Completed Project

30



Silicone | Acrylic | Silicate Top Coat Render



Silicone Top Coat Render

Paste coating based on siloxane binder, ready to use with high water-repellent and excellent vapour permeability, certified according to ETICS standards. Boasting excellent anti-mould and anti-algae properties. To be used as a decorative finish in **Licata Render Systems** and in all cycles where a high water vapour permeability is required.



Acrylic Top Coat Render

Paste coating based on acrylic binder ready to use with high water repellence and excellent vapour permeability certified according to ETICS standards. With excellent anti-mould and anti-algae properties, ideal for aesthetic/functional decoration/restoration of facades and for use with **Licata Render Systems**.



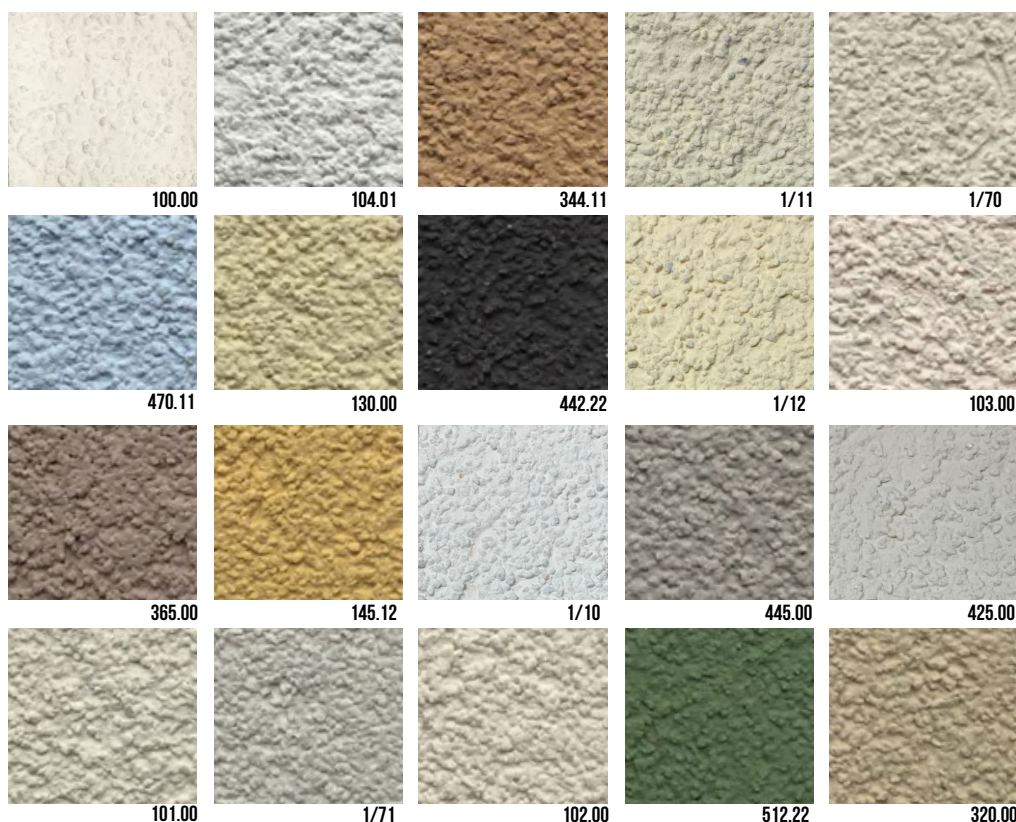
Silicate Top Coat Render

Putty mineral coating with a potassium silicate base, ready to use; high breathability and with good water repellency. It has natural anti-mould and anti-algae properties. LicataSil is indicated for the decoration of new or existing facades and for use with **Licata Render Systems**.

Our silicone, silicate and acrylic renders are available in over 1000 different colours from our **Licata Colour Collection** and we can also match to any colour of your choice.



Due to the printing process the below colour samples may show a slight difference compared to the actual product colour. Please view actual product prior to making a colour choice.



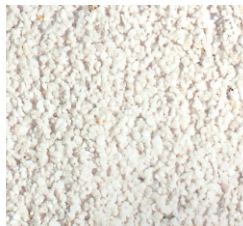
Multi Colour Resin Finish

Multi Colour Resin Wall Coating

Ready-to-use wall covering in paste, based on acrylic binder and colored ceramic grains, with high water repellency and excellent abrasion resistance. With good fire resistance properties, it is ideal for decorative interventions both indoors and outdoors.



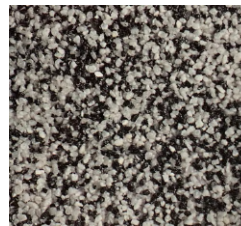
5/21



5/30



5/22



5/20



5/11



5/31



5/41



5/12



5/30



5/42

Main Fields of Use

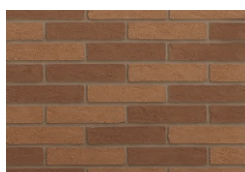
- + Painted and enamel surfaces
- + Wall coverings even old provided that they adhere well to the substrate
- + Ceramic tiles also porcelain or enamel (provide a mechanical abrasion or wash with caustic soda)
- + Skim plasters and plasters with any degree of finish
- + Concrete
- + Autoclaved aerated concrete
- + Brick and masonry in general
- + Plasterboard

Acrylic Brick Slips

Licata's acrylic brick slips are mineral-based, made from a mixture of assorted quartz sands and a binding agent. Ideal for new build and renovation projects, they are perfect for façade cladding whilst creating a beautiful aesthetic. Suitable for internal and external use, brick slips are cost-effective and quick to apply. They are durable, weather resistant and come with a 10 year guarantee. Our acrylic brick slip range is available in a wide range of sizes, textures and colours.



LIC6000 A



LIC6001 A



LIC6002 A



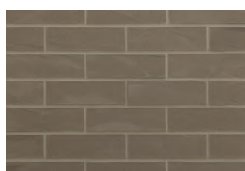
LIC6003 A



LIC6004 B



LIC6005 A



LIC6006 A



LIC6007 A



LIC6008 A

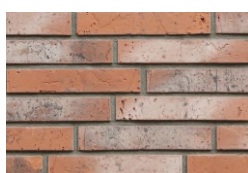


LIC6009 A

View our full range of colours available in our Acrylic Brick Slips brochure

Clay Brick Slips

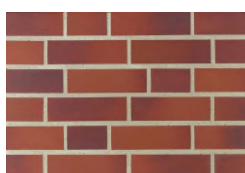
Licata's clay brick slips are thin sections of brick that replicate the look of traditional brickwork. Ideal for new build and renovation projects, they are perfect for façade cladding whilst creating a beautiful aesthetic. Suitable for internal and external use, brick slips are cost effective and quick to apply. They provide excellent durability and low maintenance. Our clay brick slip range is available in a wide range of sizes, textures and colours.



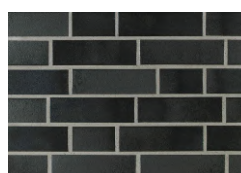
WEATHERED
old-millhouse



WEATHERED
london-buff



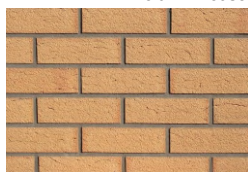
SMOOTH
bordeaux



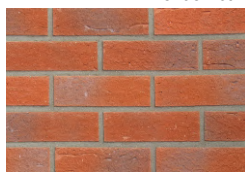
SMOOTH
grenoble



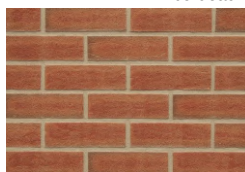
SMOOTH
staffordshire blue



HANDFORMED
colorado flamed



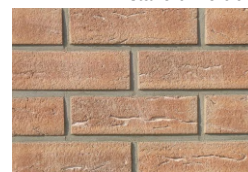
HANDFORMED
red blue multi



HANDFORMED
florence antique



HANDFORMED
autumn leaves



HANDFORMED
royal antique

View our full range of colours available in our Clay Brick Slips brochure



Twickenham

Unit 6, Hampton Business Park
Bolney Way, Twickenham
TW13 6DB, United Kingdom

Tel: 020 8894 3372

Southgate

Unit 5 Brunswick Industrial Park
Southgate
N11 1JL, United Kingdom

Tel: 020 3987 0200

Dartford

Unit 4 Schooner Park
Schooner Court, Dartford
DA2 6NW, United Kingdom

Tel: 01322 927 600

Birmingham

Unit 17 Frankley Industrial Estate
Tay Road, Frankley
B45 0LD, Birmingham, United Kingdom

