

NEW BUILD | REBUILD | RENOVATE WITH LICATA CLAY BRICKSLIPS

...made of pure fire clay



BUILD SUSTAINABLY WITH LICATA CLAY BRICK SLIPS

A LICATA BRICK FACADE LIFETIME...



Lic.7355b



Lic.7355b

... without chemical protection against algae growth or against damage - not only for your facade but also for the environment

GET THE ORIGINAL CHARACTER OF AN OLD BUILDING WITH LICATA SLIPS



Lic.2764



Lic.7424

SUITABLE FOR INDOOR AND OUTDOOR USE

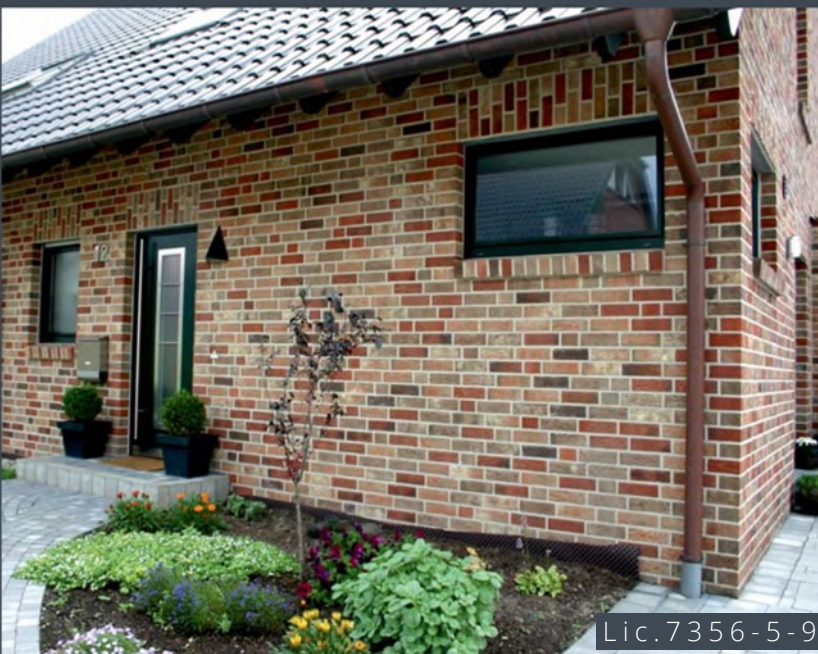
THE TOPIC: OLD BUILDING RESTORATION AND ENVIRONMENTAL PROTECTION



Since Licata slips are made directly as slips - and do not have to be blown out of solid stone - they help to save CO2 during their manufacture



AN INVESTMENT IN THE FUTURE: LICATA BRICKSLIPS + MODERN INSUALTION



... not only saves energy and protects the environment, but is also required by the state



LICATA CLAY BRICKSLIPS: BURNED FROM PURE CLAY



Even in modern new buildings (low energy or passive house), Licata Clay Brickslips are the facade cladding of choice: quickly installed, maintenance-free and, thanks to the slim wall structure, a gain in living space

NEW BUILDING WITH LICATA CLAY BRICKSLIPS



VARIETY OF PRODUCTS

Traditional, Modern, or Innovative. You can choose from a variety of different type of Licata Clay Brickslips.



We not only offer you Licata Brickslips in a variety of colour formats and surfaces, but also in various thicknesses. Our standard sizes are 7, 10 and 15mm. However, we are also able to take individual customer requests into account

A MODERN MATERIAL WITH A GREAT TRADITION

BRICKSLIPS NATURAL COLOURS ARE PRESERVED

UV-resistant: In contrast to imitations made of concrete, bitumen or plastic with artificial colour additives, the natural colour of the fired clay remains colour-stable even when exposed to sunlight



AVOID FOLLOW-UP COSTS WITH LICATA BRICK SLIPS

A modern dam leads to a colder skin. As a result, wall surfaces – especially light ones – remain moist for a long time. In addition, the composition of the air has changed: less sulphur (less acid rain), but more CO2 in the air.

Optimal growth conditions for algae, mushrooms, and flakes, which can make a white façade look unsightly very quickly!



The Licata material is insensitive to algae, fungi, and lichen. This is attested by millennia-old architectural monuments. The use of toxic biocides and fungicides, which must be water-soluble to be effective and are therefore washed out after a few years and then pollute the surface water, do not require real brick slips

RESISTANT - DURABLE - VERSATILE

Brick slip wall cladding provides benefits of real brick

Whether residential or commercial brick structures exude a sense of timelessness and permanence. Brick slip cladding can exude those same characteristics, which enhances the way your home or business is perceived. Traditional brick also has outstanding thermal mass properties. This means it is able to store heat and release it in a controlled way. During the summer this helps keep your home cool, and during the winter it helps it stay warm. Clay brick slip wall cladding also exhibits good thermal mass properties.

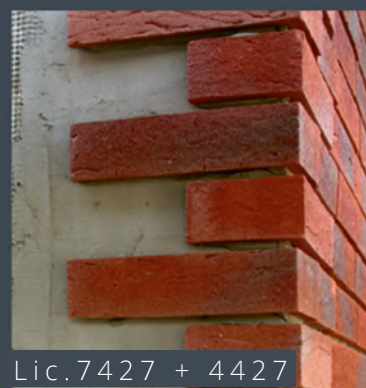


LICATA CLAY BRICK SLIPS CAN BE COMBINED WITH MANY THERMAL INSUALTION SYSTEMS

In the outer wall area, there are various options for combining Licata brick slips with a warning dam. Depending on the nature and strength of the insulation, different thermal insulation standards can be achieved. We recommend only using systems that have a building inspectorate approval. Some examples from current construction practice.

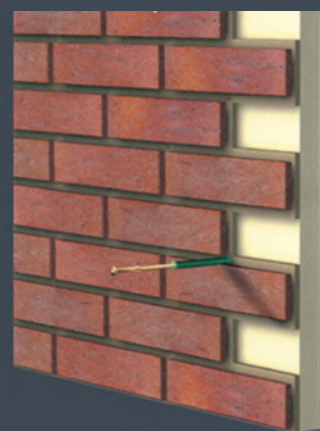


Conventional thermal insulation system: slips are applied to the insulation panels.



However, these must be reinforced with a reinforcing fabric. Only then are the slips glued and grouted. A taut cord helps keep the slips horizontal.

Prefabricated thermal insulation panels made of PU foam, already provided with Licata Brickslips at the factory



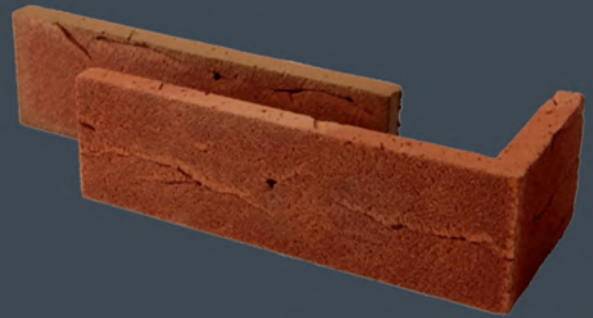
However, these must be reinforced with a reinforcing fabric. Only then are the slips glued and grouted. A taut cord helps keep the slips horizontal.

A HIGH-QUALITY FACADE WITH LICATA CLAY BRICKSLIPS

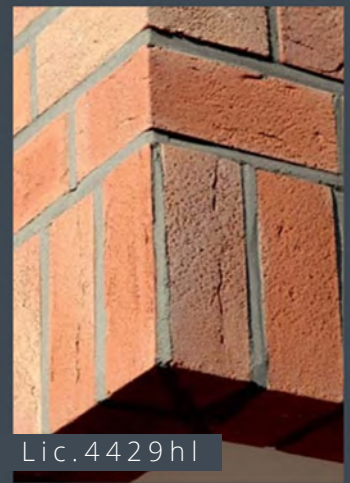
ANGLE SLIPS FOR PERFECT MASONRY OPTICS



With prefabricated angled slips you can create a perfect wall look.



Walls corners, window lintels, soffits etc, can all be optimally shaped with angled brick slips.



With us you get the right Licata Angled Clay Brick Slips for all types of surfaces.



TIMELESS AND MAINTENANCE-FREE

A PERMANENT INCREASE IN VALUE FOR YOUR HOME

With Licata Clay Brick slips you upgrade your home with a real timelessly beautiful brick facade.



A high-quality Licata Brickwork preserves the typical character of your house and at the same time significantly increases the market value of your home

Houses with low energy consumption and a maintenance-free facade increase the quality of living and are much easier to sell and rent.



BREATHABLE LICATA BRICKSLIPS IN THE INTERIOR

Thanks to their open-pore capillary structure, Licata slips are particularly breathable and moisture-regulating. Not only do they create a homely atmosphere, they also ensure a healthy and comfortable indoor climate - free of harmful vapours.



Lic.7355b

AN INDIVIDUAL STONE FOR A UNIQUE SPACE



Lic.3884terra



Lic.3880cotto

Designing flat surfaces: Licata slips offer many options for individual design: dispensing with joints, only using bed joints, colouring joints in stone colour, laying them in alternative bandages or joining and processing in the classic masonry tradition.

FOR A COMFORTABLE INDOOR CLIMATE

7MM SLIPS ...



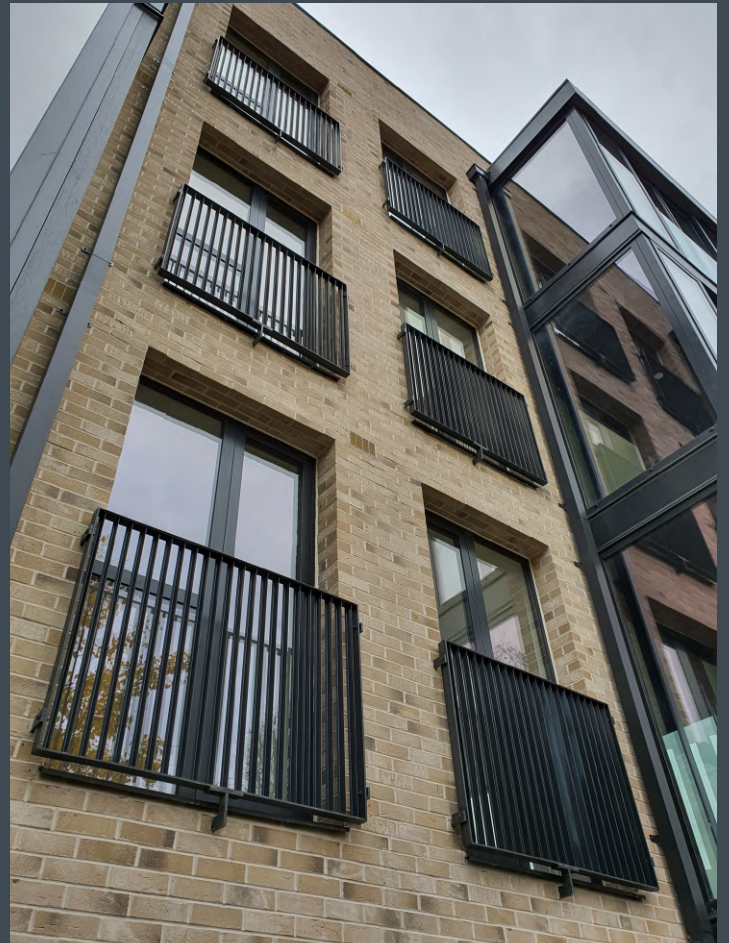
... are insensitive and extremely easy to care for

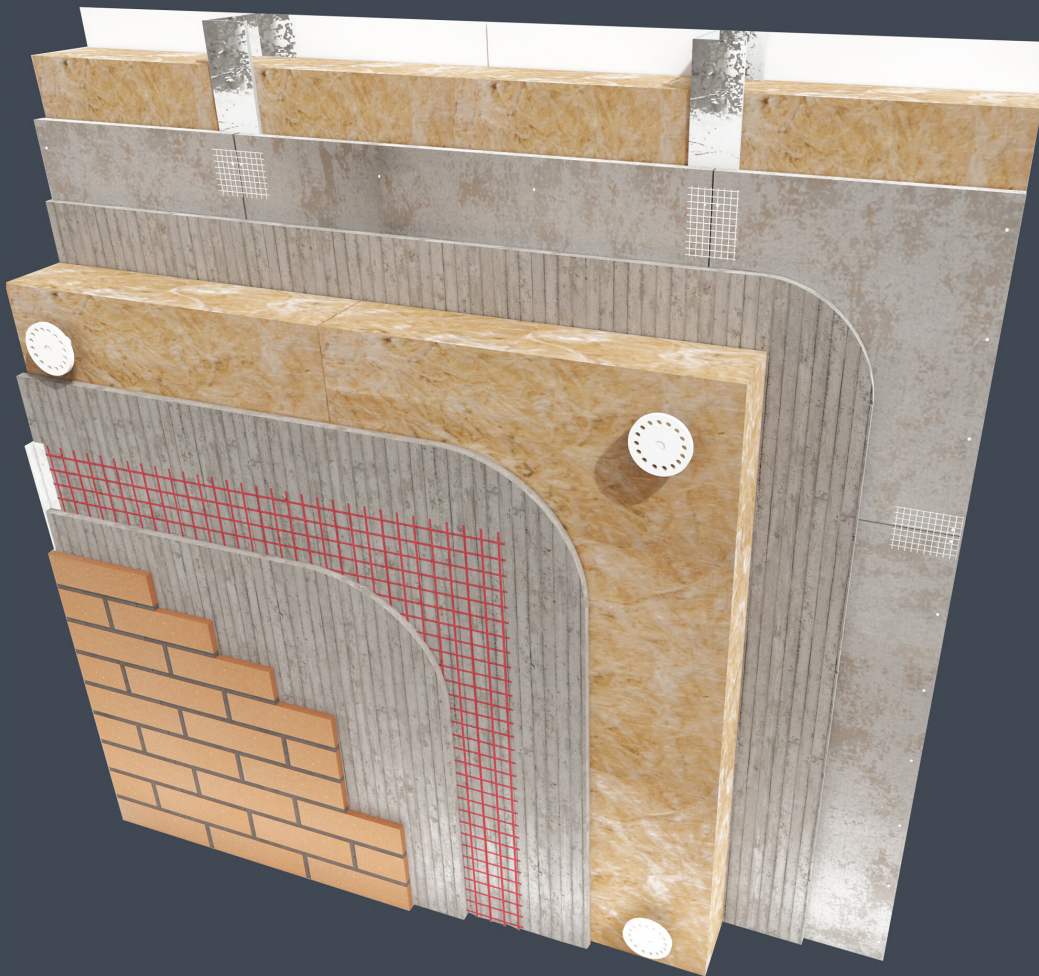


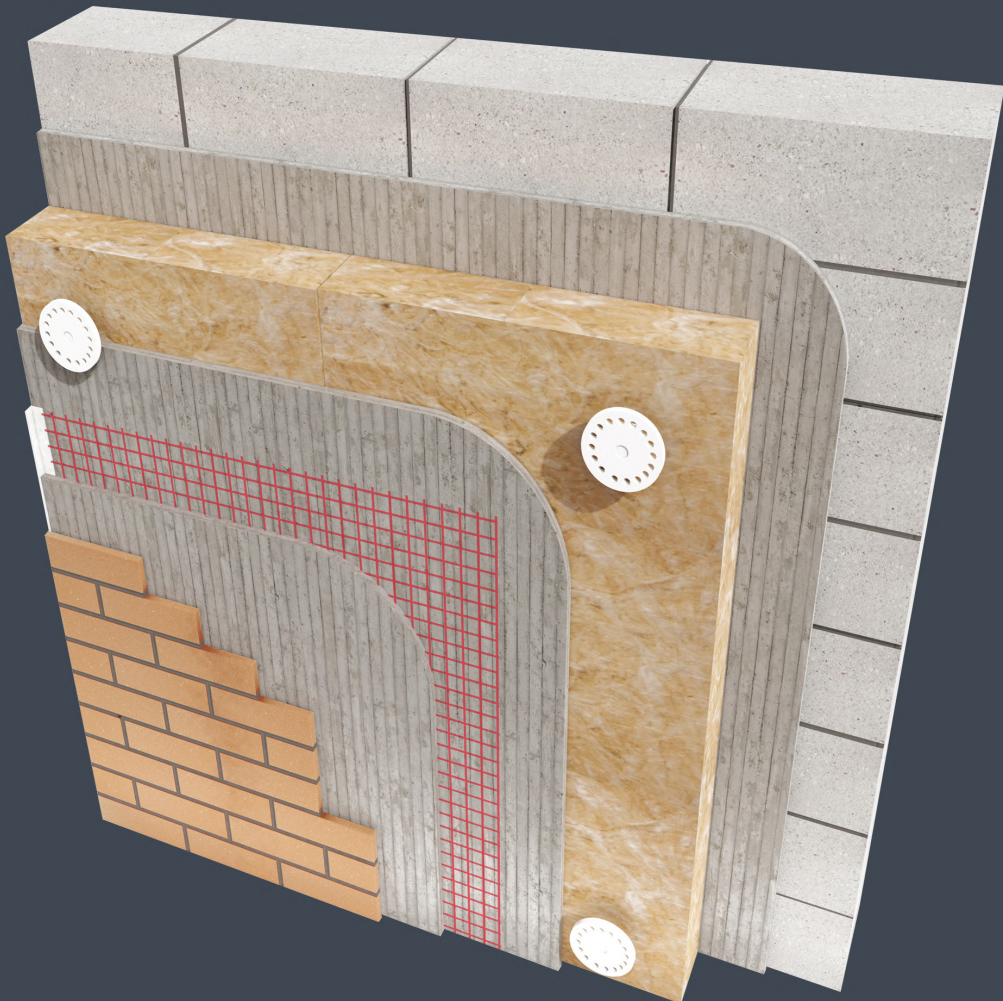
... make elaborate painting and wallpapering superfluous



... and particularly easy to process yourself (no problems with sockets and switches). Due to the low thickness, subsequent grouting is possible in the interior but not necessary (smooth adhesive line in the joints)







FORMATS AND SURFACES

The effect of a Brickslips facade is essentially determined by the format of the clinker, its play of colours and not least by the surface structure of the clinker brick. With us you can choose your Licata Brickslips
We are happy to accommodate individual requests (e.g. for products in special colours, formats, strong or special surfaces).

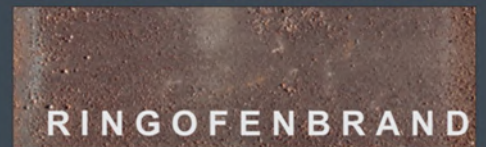
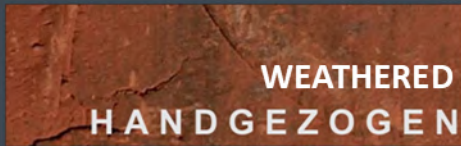
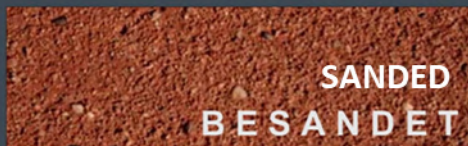
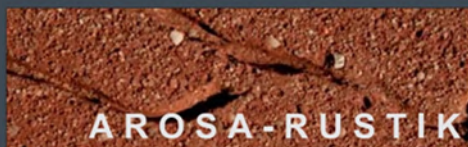
STANDARD FORMATS

UK Size

WDF 215 x 65 mm

Our Standard sizes at Licata are 7, 10 and 15mm. Do you want another size? Ask us, we can do a lot.

SURFACES





WEATHERED old-millhouse



WEATHERED london-buff



SMOOTH bordeaux



SMOOTH grenoble



SMOOTH Staffordshire blue



HANDFORMED colorado flamed



HANDFORMED red blue multi



HANDFORMED Florence antique



HANDFORMED autumn leaves



HANDFORMED royal antique



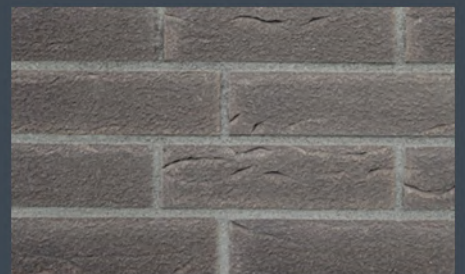
HANDFORMED red sand flamed



HANDFORMED old-millhouse



HANDFORMED red nuance



HANDFORMED Arezzo-nero



HANDFORMED Flame Colour



VINTAGE New York



VINTAGE charleroi



VINTAGE oslo



WATERSTRUCK boston



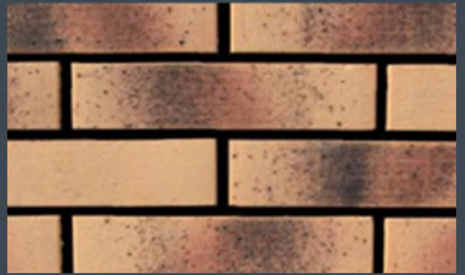
WATERSTRUCK auckland



MONTANA ravenna



SANDED Red Nuance



SANDED Leonardo



SANDED Dark Red Nuance

Twickenham

Unit 6, Hampton Business Park
Bolney Way, Twickenham
TW13 6DB, United Kingdom

Tel: 020 8894 3372

Southgate

Unit 5 Brunswick Industrial Park
Southgate
N11 1JL, United Kingdom

Tel: 020 3987 0200

Dartford

Unit 4 Schooner Park
Schooner Court, Dartford
DA2 6NW, United Kingdom

Tel: 01322 927 600

Birmingham

Unit 17 Frankley Industrial Estate
Tay Road, Frankley
B45 0LD, Birmingham,
United Kingdom

www.licataltd.co.uk

