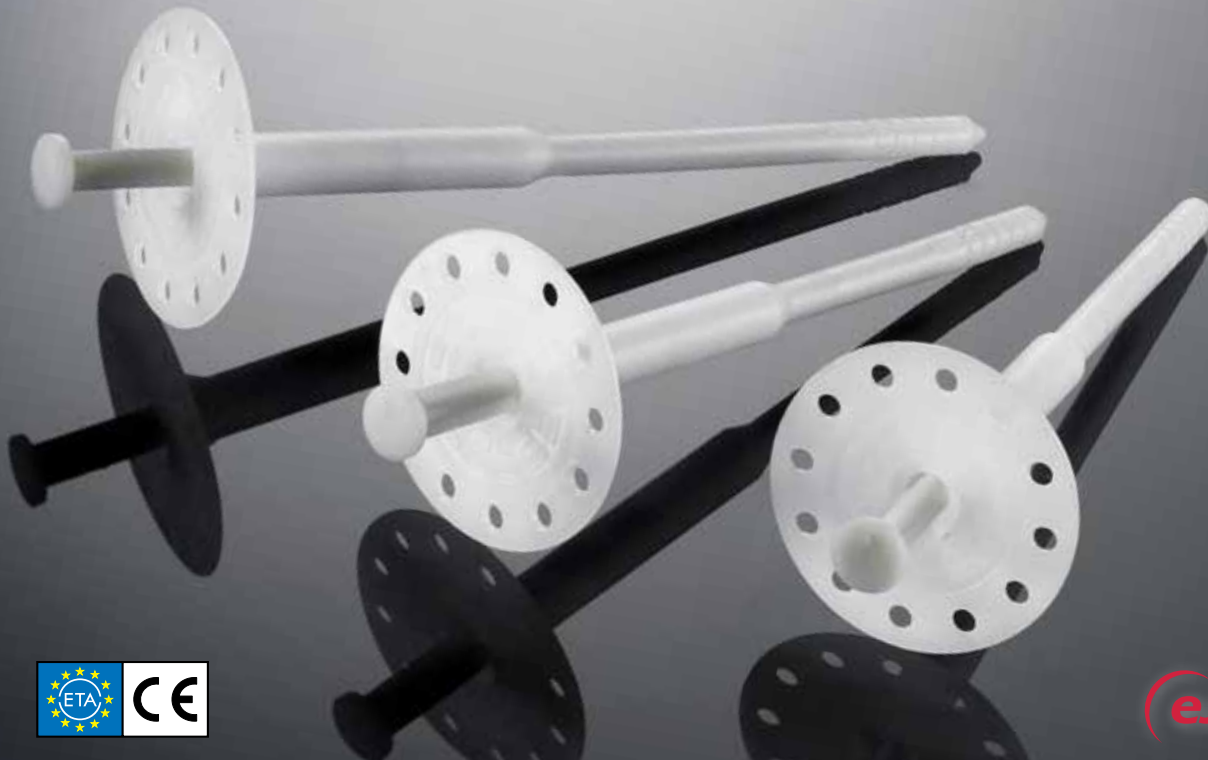




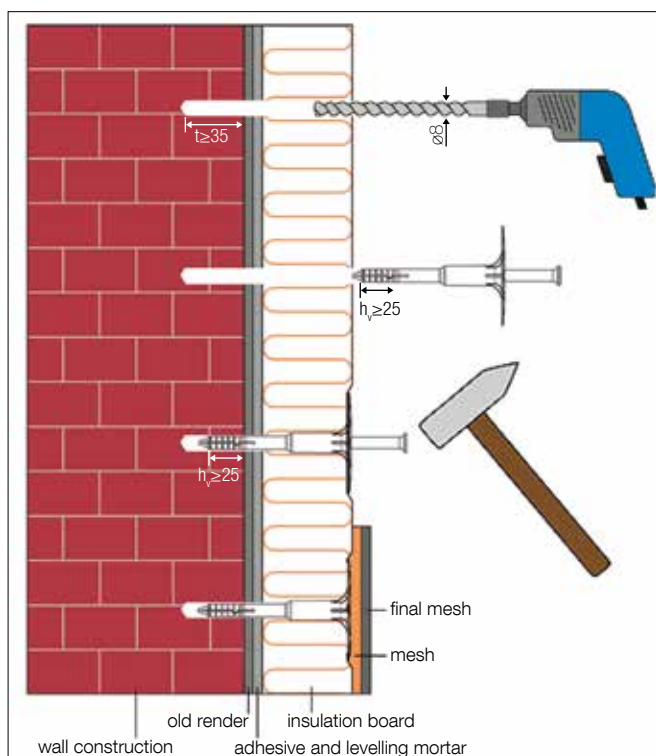
EJOT® H1 eco

The universal hammer-in anchor for all substrates with European Technical Approval

Fastening of insulation boards



Installation



Advantages

- ❑ Approved for all building materials
- ❑ Solid steel nail (break-proof)
- ❑ Low profile washer face
- ❑ Plastic injection element to reduce thermal bridges
- ❑ Can be used with an additional spreader washer
- ❑ Short embedment depths, minimum drill hole depth
- ❑ High loads for your security
- ❑ Economic anchor usage
- ❑ Premounted nail for quick installation
- ❑ With EPD (Environmental Product Declaration)

EJOT® H1 eco

The universal hammer-in anchor for all substrates with European Technical Approval

Fastening of insulation boards

Technical data

| | |
|-----------------------------------|---------------|
| Anchor nominal diameter | 8 mm |
| Washer diameter | 60 mm |
| Drill hole depth $h_1 \geq$ | 35 mm (55 mm) |
| Embedment depth $h_{ef} \geq$ | 25 mm (45 mm) |
| Point thermal transmission χ | 0.001 W/K |
| Use categories acc. to ETA* | A, B, C, D, E |
| European Technical Assessment | ETA-11/0192 |

Values in parentheses: anchoring in lightweight aggregate concrete and autoclaved aerated concrete (use categories D and E)

Accessories

A broad range of accessories is available for the EJOT H1 eco product group:

EJOT combi washer **VT 90** and **SBL 140 plus**



Characteristic loads

| | | |
|---|--|---------|
| A | Normal weight concrete C 12/15 acc. to EN 206-1 | 0.9 kN |
| A | Normal weight concrete C 20/25 - C 50/60 acc. to EN 206-1 | 0.9 kN |
| B | Clay bricks (Mz) acc. to EN-771-1 / DIN 105 | 0.9 kN |
| B | Solid lime sandstone (KS) acc. to EN 771-2 / DIN EN 106 | 0.9 kN |
| C | Vertically perforated clay bricks (Hlz) acc. to EN 771-1 / DIN 105, bulk density, $\geq 1.2 \text{ kg/dm}^3$ | 0.75 kN |
| C | Vertically perforated clay bricks (Hlz) acc. to EN 771-1 / DIN 105, bulk density, $\geq 0.9 \text{ kg/dm}^3$ | 0.6 kN |
| C | Sand-lime perforated bricks (KSL) acc. to EN 771-2 / DIN 106 | 0.9 kN |
| D | Lightweight aggregate concrete (LAC 4 - LAC 25) acc. to EN 1520 | 0.9 kN |
| E | Autoclaved aerated concrete AAC 4 - AAC 7) acc. to EN 771-4 | 0.5 kN |

Please note: For calculation of design loads the national safety factors have to be included (e.g. Germany: 3). Please observe the approval.

Product range

| Use categories A-C Insulation (mm) | | Use categories D-E Insulation (mm) | | Product name and length (mm) | Product code | Packaging (pieces) | Pallet quantity (pieces) |
|---------------------------------------|--------------------------|---------------------------------------|--------------------------|------------------------------|--------------|--------------------|--------------------------|
| New build. ¹⁾ | Renovation ²⁾ | New build. ¹⁾ | Renovation ²⁾ | | | | |
| 60 | 40 | 40 | - | EJOT H1 eco 095 | 8746 095 400 | 100 | 5,000 |
| 80 | 60 | 60 | 40 | EJOT H1 eco 115 | 8746 115 400 | 100 | 4,000 |
| 100 | 80 | 80 | 60 | EJOT H1 eco 135 | 8746 135 400 | 100 | 4,000 |
| 120 | 100 | 100 | 80 | EJOT H1 eco 155 | 8746 155 400 | 100 | 3,000 |
| 140 | 120 | 120 | 100 | EJOT H1 eco 175 | 8746 175 400 | 100 | 3,000 |
| 160 | 140 | 140 | 120 | EJOT H1 eco 195 | 8746 195 400 | 100 | 3,000 |
| 180 | 160 | 160 | 140 | EJOT H1 eco 215 | 8746 215 400 | 100 | 3,000 |
| 200 | 180 | 180 | 160 | EJOT H1 eco 235 | 8746 235 400 | 100 | 2,000 |
| 220 | 200 | 200 | 180 | EJOT H1 eco 255 | 8746 255 400 | 100 | 2,000 |
| 240 | 220 | 220 | 200 | EJOT H1 eco 275 | 8746 275 400 | 100 | 2,000 |
| 260 | 240 | 240 | 220 | EJOT H1 eco 295 | 8746 295 400 | 100 | 2,000 |

¹⁾ 10 mm adhesive

²⁾ 10 mm adhesive and 20 mm old render